

# E16 News



Kick off at Thrive 2008  
See page 5



Safer neighbourhoods  
See page 2

LATEST REGENERATION NEWS FOR CANNING TOWN AND CUSTOM HOUSE RESIDENTS



Mayor Sir Robin Wales unveils the new multi use games area with Cllrs Ayesha Choudhary, Marie Collier, Pat Holland, Paul Schafer and Conor McAuley at Thrive 2008





## INSIDE VIEW

Welcome back and I hope you enjoyed the break. The

Canning Town and Custom House Regeneration Project has had a busy summer. The project team have been out and about to public events like the Mayor's Town Show and were on hand to talk to local residents at our Meet@theplace information day and at our Thrive 2008 event which was attended by over 600 people and Newham Mayor, Sir Robin Wales and local councillors.

We can proudly say that the Supplementary Planning Document (SPD) was officially adopted in July by Newham's Cabinet. Thank you to everybody who commented during the consultation period. This allows us to really move ahead with regeneration for the area. Other exciting news is that Countryside properties have now submitted a planning application for Area 3, the area around Fife road.

We are excited by these developments and hope you enjoy reading this issue and remember if you would like to find out more about regeneration plans in E16, you can also drop into our offices by Canning Town station between Monday to Friday between 9am and 5pm or call 0208 430 3131.

**Helen Fisher**  
Project Director  
Canning Town and Custom House  
Regeneration Project



### SPREADING THE MESSAGE OF



Canning Town South Safer Neighbourhood Team organised a balloon competition in July to raise awareness and spread the good work of safer neighbourhood policing. Attached to the helium filled balloons were individual tags with a message from the team. Balloons were first released on a gusty day at the St Luke's Primary School International day. The last balloon was released at the official opening of the multi use games area in Keir Hardie Park.

The safer neighbourhood team managed to raise £100 for the local charity, Friar Benets Kitchen, a community soup kitchen which runs Monday to Thursday between 11am and 2pm in Killip Close, Canning Town. Within 24 hours of releasing the balloons, messages were received from around the country with the location of the balloon. Messages came from Herne Bay in Kent, Alexandra Palace, Leighton Buzzard to name but a few. However, the winning balloon really went the distance and was located overseas in Zandvoort, Holland.

Sergeant Steve Micallef said "This was a fun way to promote the work of the team as well as at the same time raising money for a local good cause. I would like to thank all those who bought a balloon from us thereby raising a substantial amount of money to help those less fortunate."

The young man who released this balloon received a £20 book voucher as a prize. Whether it be through email, word of mouth or by balloon the message of safer neighbourhood policing is spreading.



Top: The winner hands over £100 to be used at the Friar Benets Kitchen  
Above: The winner, his family, members and friends of the Friary and Canning Town South Safer Neighbourhood Team

## Kick off at Thrive 2008

Mayor of Newham Sir Robin Wales and councillors opened a new multi use games area at the Thrive 2008 fun day, Keir Hardie Recreation Ground in July.

More than 600 residents attended the fun day and to check out the brand new facility. The new floodlit turf was part of a £15 m cultural investment programme into Newham's facilities and in response to feedback from local consultation on the Keir Hardie Park Masterplan.

Bushra Hamida, 16 has already tested it out to play handball "I like the surface as it's not too slippery .It's really good because there's a lot of space to do different sports and there's a nice atmosphere in the park," she said. Use of the games area is free and it will host a mixture of organised coaching and sports leagues as



well as turn up and play sessions. The project has been jointly funded by the council and the Government's Safer, Stronger Communities fund. It's one of many initiatives aimed to reduce anti-social behaviour and increase the use of open spaces to encourage the whole community to get involved in physical activity.

Community lead councillor for Custom House and Canning Town, Pat Holland, said: "It's a brilliant facility for people of all ages and abilities to use. I'm sure it will have multiple benefits for our community".

Thrive 2008 was organised by Canning Town and Custom House Regeneration Project, in partnership with Regenter-LCEP, Workplace, Canning Town South Safer Neighbourhood Team, L& Q Group, Higgins, Early Start and Pinnacle.



## Plans to improve performance at schools

**Newham Council has announced plans designed to help two of its schools raise the achievement levels and aspirations of pupils.**

The council intends to work with the Department for Children, Schools and Families in improving performance at Eastlea School in Canning Town and Royal Docks School in Custom House.

The schools are currently beneath the Government's expectation of at least 30% of young people achieving five or more GCSEs at grades A\* to C including English and Maths. The council has a framework outlining options that can be considered for improving schools in these circumstances.

The council is to explore the option that Eastlea becomes a National Challenge Trust school. This will see the council developing a strong partnership with business or higher education partners such as a university in order to improve performance at the school.

At Royal Docks School, the council is working towards creating an Academy where high quality sponsors such as business and education partners will be appointed to take on governance of the school from the local authority.

Mayor of Newham, Sir Robin Wales, said: "Education in Newham is improving and our young people achieve as well or better than others from less deprived areas.

"Pupils in our secondary schools performed well in this year's GCSE examinations and the percentage achieving

five or more GCSE grades from A\* to C rose by 1.4 per cent. The results have however highlighted two schools that are not delivering sufficiently well in terms of GCSE performance.

"We must act if we are to safeguard the future life chances of children at those schools, to enable them to gain the skills they need to take advantage of the job opportunities arising from the 2012 Games and other major regeneration projects."

Andrew Adonis, Parliamentary Under Secretary of State for Schools and Learners, added: "I am delighted to support Newham's ambition to look towards developing a National Challenge Trust school and an Academy in Newham. This offers exciting opportunities for young people and the Government stands ready to make significant investment to support the Mayor's exciting vision."

Custom House Councillor Conor McAuley has welcomed the move and states "I know that parents and pupils in this area aspire to higher standards in education and I am sure that they will join with us to work to transform both schools".

Discussions are now getting under way with staff, pupils, governors, parents of children at the schools and other key stakeholders, about the benefits and wider implications of the proposals. They will be kept informed of key developments going forward. The process could take from four to eight months in both cases.

## CONTACTS

**Canning Town and Custom House  
Regeneration Project**  
The Place  
2 Silvertown Way E16 1EA  
020 8430 3131

**Newham Homes Community Housing Team**  
Local Service Centre  
Beckton Road E16 5JQ  
Or you can contact your housing officer on  
020 8430 4096

**Pinnacle**  
Beverley Varney  
Nelson Street Studios  
Nelson Street E16 1DS  
020 7540 9880



Exeter Road view – Macreanor Lavington Architects

## Area 3 Countryside

Countryside Properties has submitted a planning application for the first phase of the Canning Town and Custom House regeneration project, known as 'Area 3'. The site is located around Fife Road and includes the buildings and grounds of Keir Hardie Primary School.

The proposed development provides 649 new mixed tenure homes, the re-provision of Keir Hardie Primary School in a new building and playgrounds, a new energy centre, new tree lined streets and high quality open space. The proposed development is being delivered through a partnership between London Borough of Newham, Countryside Properties (UK) Limited and William Sutton Housing Association.

Before making a decision on the application the council would like to know your views. A copy of the application can be viewed at the Council's development control offices at the Town hall annexe, East Ham between 9am-5pm Monday to Friday.

You may also contact planning by e-mail at [development.control@newham.gov.uk](mailto:development.control@newham.gov.uk) or on line at <http://www.newham.gov.uk/planning> where you will also be able to view the plans and other documents relating to this application as well as send us your views.

## Supplementary Planning Document now official

The Canning Town and Custom House Supplementary Planning Document (SPD) was adopted 17 July 2008 by the London Borough of Newham. The SPD sets out principles and standards to guide future development in Canning Town and Custom House. It forms part of the Local Development Framework for the London Borough of Newham. For more details visit the Canning Town and Custom House project pages [www.newham.gov.uk](http://www.newham.gov.uk)



## Pride of PLACE

The regeneration of Canning Town and Custom House is an exciting opportunity to make the area a place where people choose to live and work. But as we look to the future we shouldn't forget what has gone before. The area has a rich history with much to be proud of, and for residents it is a place full of memories.

Do you have any old photographs that show how the area used to be and what went on here? These could be images of people, homes, shops, pubs, schools, clubs, churches, parks, local industries and events, social or sporting activities. In fact, pretty much anything that provides a snapshot of what life was like in Canning Town and Custom House.



We would like to hold an exhibition of these local images. If you have some photographs (they don't have to be professional) that you think may be of interest to others we'd love to hear from you.

Neighbourhood 15 is a film describing the post war slum clearance programme in the area and the construction of the Keir Hardie estate. Was your family part of Neighbourhood 15? Was your family one of the first to be re-housed on the Keir Hardie estate? What are your memories of the estate?

If you have photographs you would be happy to make available, were part of Neighbourhood 15, or would like to see the film please get in touch with Keith Smith or Sam Clark at The Place on 020 8430 3131. Any photographs used would be well looked after and returned after use.

## Ofsted inspectors award top marks to St Luke's



The Canning Town Primary School was given a massive thumbs-up when education chiefs carried out their inspection on 8 July. And according to schools inspector Robert Lovett, pupils had it absolutely right when they said "almost everything about this school is outstanding. "... it succeeds exceptionally well in its published aim to be a school where staff, pupils and parents want to be!" he enthused.

Pupils and staff saw the school awarded the highest grade possible in all but two of the report's categories. For overall effectiveness, inspectors awarded its Grade 1 -exceptional and consistently high - in all four sections. For achievement and standards, the school received three Grade 1s. Personal development and well-being saw the school awarded eight Grade 1s. For quality of provision it was a straight three Grade 1s and for leadership and management it was Grade 1 again in all eight categories.

Teachers were also commended in the report for the way they support and encourage pupils in their learning, leading

them to feel confident and eager to respond. "Teachers know their pupils well and work is carefully matched to their learning needs," he said. His report also highlighted the "positive and unanimous" response from parents about St Luke's adding that this positive picture was reinforced by pupils who have "real pride in their school and are eager to talk about its many strengths".

In a letter to the pupils, Inspector Robert Lovett said: "Yours is a happy, polite, very well behaved and hard working school. Your headteacher and others who work in the school are doing an excellent job. They know the school very well and have good plans in place to enable it to continue to improve.

The good news is that you attend an outstanding school." Commenting on the Ofsted report, St Luke's Headteacher, Theresa Aanonson, said: "I am delighted and proud. The pupils and staff are a credit to the school. Despite this great Ofsted report, we have no intention of being complacent and we intend to go from strength to strength."

## Keir Hardie School puts the wheels in motion



Back row, from left - Tony Doyle MBE, Sir Robin Wales, Prime Minister, Lyn Brown MP for West Ham and Joe Duckworth. Front row, from left - Beatriz Monteiro, Montel Vernege and Chanlone Makedi from Keir Hardie Primary School, Canning Town.

Pupils from Keir Hardie school were part of a visit to No10 to help welcome the Prime Minister's announcement for a cycling festival to be held in Newham. It will be the first ever On Track six day London 2009 cycling festival and will be headed by world champion cyclist, Tony Doyle MBE.

The three pupils Chanlone, Beatriz and Montel joined Newham Mayor, Sir Robin Wales and Chief Executive Joe Duckworth at a reception hosted at Downing Street. They were involved as Keir Hardie school runs a successful cycling club which is also part of the school's own travel plan. The aim of the club is to increase cycling safety and also to encourage more pupils to take a greener route to school. "We were picked as we are on the School Council and also part of the cycling club which ran for 6 weeks and we start up again in September" said Montel.

The club was such a success that they had to turn people away, so for September they will be going with a bigger group. "The cycling club encourages people to cycle, keep fit and healthy. Also the green routes are a shortcut" said Beatriz Monteiro. Chanlone Makedi found the visit quite special and spoke to the Prime Minister "He shook our hands. He also asked us about our cycling club and we told him all about it and he was very impressed."

## MEET@THEPLACE

Over 100 residents came along to the Meet@theplace event in July at the Canning Town and Custom House regeneration offices opposite Canning Town Station.

Residents were entertained by a band with children being kept busy with art, henna and face painting, while the Project's new café services delighted residents with tasty bites through the day.

Staff were on hand from Workplace, Canning Town South Safer Neighbourhood Team and other services to update people on what is happening in the E16 areas.





## Spotlight on Rehousing team

No day is the same for the Rehousing and community development officers at the Canning Town and Custom House Regeneration Project. James Harry, Scott Riches and Yvonne Weekes play a key role in ensuring that residents' needs are being considered and that they are being given the latest information on developments. The team talks to tenants about how the regeneration scheme will affect them and what their rehousing options are. They are also on hand to allay fears and concerns about potential regeneration works.

Cecile Duerinckx, Housing Project Manager said: "Our role is to reassure residents as to what will happen when the Council needs to rehouse them and offers a bespoke service to meet individual needs when they are rehoused".

"When the area is highlighted for the start of rehousing, we start talking to tenants. We will do a home visit to register them, discuss a range of options and offer extra assistance where necessary."

The team also provide additional support to tenants for example, if they are disabled or elderly or have any specific medical needs that need to be catered for. Other support maybe to provide translation for people who speak other languages. This support is extended to those who have also accepted an offer of accommodation. The choice based lettings magazine is available for tenants and is delivered to residents that are housebound or have mobility issues. Officers will also assist all tenants with the bidding process where this is requested.

For further information and assistance if you live in the regeneration area and want to find out more: contact the rehousing team 020 8430 3131 or drop by the Project offices opposite Canning Town station, The place, 2 Silvertown way.

## Weekly Police Surgery

Every Wednesday  
3pm to 5pm  
The Place  
2 Silvertown Way  
Canning Town E16

If you have any concerns about your local area like anti-social behaviour or crime, come and talk to us. An officer from Canning Town South Safer Neighbourhood Team will be available to listen and talk to you in confidence.

For more information please contact Sergeant Steve Micallef on 020 8721 2840 or email: [canningtownsouth.snt@met.police.uk](mailto:canningtownsouth.snt@met.police.uk)

## Lights, camera, action on new tri-borough film fund

Cash is up for grabs for local filmmakers through the New Pathways Film Fund as part of the London Borough Film Fund Challenge.

Residents from Newham, Tower Hamlets and Hackney can apply to take part in the New Pathways eight-day intensive training programme created by Hoxton-based production and training company VET.

The 15 successful applicants will learn the latest filmmaking technology and techniques and be invited to pitch their script, which they will develop through the training scheme, to a panel of top industry judges. The panel will then award six film bursaries of £1,500, with two being awarded to participants from each borough.

The six successful films will be premiered at the launch of next year's East End Film Festival and be entered into ITV Local's Best of Boroughs Film Awards.

The New Pathways Film Fund is a partnership between the London Boroughs of Tower Hamlets, Hackney and Newham and is part of the London Borough Film Fund Challenge supported by Film London.

Residents interested in the training programme have until 5pm Wednesday 17 September to apply.

For more information on the film fund please contact Stephanie Turnbull, Films Officer, Tower Hamlets Council on 020 7364 7920

or email: [filmsoffice@towerhamlets.gov.uk](mailto:filmsoffice@towerhamlets.gov.uk) putting "New Pathways" in the subject line.

Applications will be available to download from

[www.newham.gov.uk](http://www.newham.gov.uk)

## SERVICE WITH A TWIST

### Cyromas catering

are pleased to announce their new café in Canning Town is open for business.

Monday to Friday  
9am-3pm

Divote @ the place  
2 Silvertown Way  
E16 1EA

Opposite Canning Town station

## FREE WELFARE BENEFITS ADVICE

If you are on benefits or low income  
At Newham Citizens Advice Bureau

the charity for your community



71A Coolfin Road  
Custom House E16 3AP  
(Off Freemasons Road)

Tel: 020 7540 4941/42

The Custom House DLR station is just a few minutes away and the number 241, 147 and 325 bus stops are near to the bureau.

If you want to find out if you qualify for free legal advice, please telephone or call in to see us. We are open from 10.00 to 16.00 Monday to Friday.

- We can advise and assist you challenge decisions of DWP or take your case to an Appeal Tribunal or to Commissioners
- If in doubt give us a phone call and we will tell you if we can assist you.

We also have a caseworker who can speak or understand Punjabi, Urdu, Hindi, Pashto or Sindi. For other languages we can arrange interpreters.

## Planning a Party? Getting Married? Or Organising a Gathering? HIRE A HALL NEAR YOU!



The Hub & Grassroots Community Resource Centres both have halls available for hire. Audio visual and presentation equipment available on request.



Tel: 020 7473 5249

### Community Rates

Monday - Sunday 9am - 10.30pm, except Sunday to 9pm

3 sections	£25.00 per hour
2 sections	£15.00 per hour
1 section	£10.00 per hour

Commercial incl. public/voluntary sector  
Monday - Sunday

3 sections	£50.00 per hour
2 sections	£45.00 per hour
1 section	£30.00 per hour



Tel: 020 7474 6376

### Community Rates

Monday - Sunday 9am - 10.30pm, except Sunday to 9pm

2 sections	£15.00 per hour
1 section	£10.00 per hour

Commercial incl. public/voluntary sector  
Monday - Sunday

2 sections	£45.00 per hour
1 section	£30.00 per hour

Deposit payable of £100.00 for wedding receptions, parties or similar

# what's on

## Custom House and South Canning Town Area Tenants' Liaison Committee Meetings

Thursday 11 September, 7-8.30pm  
Cundy Centre, Hartington Road E16

Thursday 6 November, 7-8.30pm  
Trinity Centre, Bothwell Close E16

Please confirm times and venues closer to the date by calling Christine Sandford at Newham Homes on 020 8430 4693

## Expert help to get the job you want Talk to us.

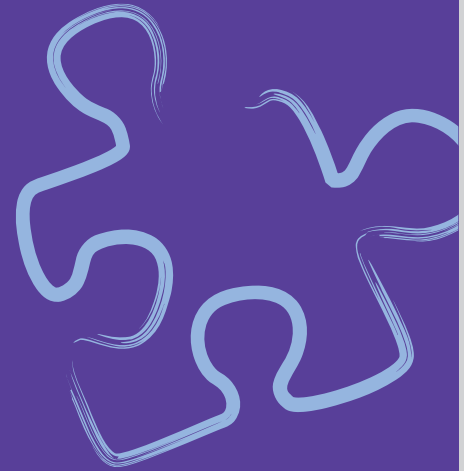
Workplace is closer to you than ever before. You can now find our friendly advisors in community centres, libraries, children's centres and other local places near you.

We can support you to increase your confidence, improve your skills, write a CV, apply for a job, prepare for an interview and even provide help with travel and other costs. We also offer in-work benefits advice and special support for parents including help with finding and paying for childcare.

Workplace SPA Project is a new initiative in Newham bringing employment advisors closer to you.

Talk to us and find out where your nearest centre is. Telephone Workplace on 020 8430 6008 and ask for SPA.

**workplace**  
Creating a better future



[spa@newhamworkplace.co.uk](mailto:spa@newhamworkplace.co.uk)  
[www.newhamworkplace.co.uk](http://www.newhamworkplace.co.uk)

Monday - Friday 9.00am - 5.00pm



### For free translation phone

للترجمة المجانية الرجاء الاتصال هاتفياً.

欲索取免費譯本，請致電。

Pour une traduction gratuite, téléphonez

मुफ्त अनुवाद के लिए फोन कीजिए

സൗജന്യമായ തർജ്ജമയ്ക്കായി ബന്ധപ്പെടുക

Turjubaan lacag la'aan ah ka soo wac telefoonka.

Para uma tradução grátis, telefone.

বিনাখরচে অনুবাদের জন্য টেলিফোন করুন

મફત ભાષાંતર માટે ફોન કરો.

मुफ्त अनुवाद लघि फोन करे

مفت ترجمہ کے لیے ٹیلیفون کیجیے۔

Za besplatne prevode pozovite

Para obtener una traducción telefónica gratuita llame al:  
Перевод – бесплатно. Звоните.

Për një përkthim falas telefononi.

இலவச மொழிபெயர்ப்புக்கு தொலைபேசி செய்யவும்.

Για δωρεάν μετάφραση, τηλεφωνήστε.

Ücretsiz çeviri için telefon edin.

Điện thoại để được thông dịch miễn phí.

یو وەرگێران (تەرجومەکردن) بە خۆزایی، تەلەفۆن بکە.

Del nemokamo vertimo skambinkinte

For large print or braille phone

**020 8430 6291**

© Newham Language Shop

CDES/08/42