

Advice for Clients

The Officer carrying out treatment for you will explain what has been done and point out things you need to do or ways in which you can help us to control the flea problem.

Before treatment

The treatment carried out will be more effective if you: -

- Thoroughly vacuum all carpets, furniture and pet bedding before the visit. Empty the cleaner into a bin liner outside the house or replace disposable bags.
- Make sure floors are as clear as possible and move furniture away from walls.
- Check your pets for fleas and treat them as directed by your vet.

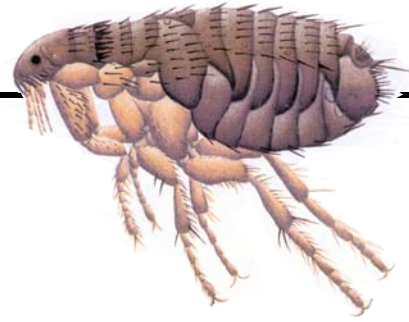
After treatment

You can help reduce continuing problems if you: -

- Wash or dry clean all clothing and bedding likely to have been infested.
- Leave cleaning the treated carpets for 7 to 10 days.
- Check your pets regularly and if fleas are found treat them as directed by your vet.
- Clean or change pet bedding regularly.
- The insecticides we use work for about six weeks. Fleas will still be developing after the treatment so we cannot guarantee it will completely get rid of the infestation. We know that the insecticides work but further treatments may be required.

FLEAS

Pest Control Factsheet



Fleas are parasites of warm-blooded animals. There are many species and each prefers its' own host but will feed on other animals including humans. The human flea and dog flea are now rare in this country and we are usually bitten by cat fleas.

Description

- Adult fleas are about 3 mm long and brown in colour. They live on the host or close by, frequently in pet bedding.
- Their bodies are flattened so that they can move through hair quickly.
- Large rear legs allow them to jump to and from the host.

Life Cycle

- Flea eggs are very small and white in colour. They are laid on the host or nearby in bedding, carpets or furniture.
- Larvae hatch and preferably feed on flea droppings with blood in.
- They pupate after 2 to 3 weeks and can remain in this stage for up to 9 months.
- Adults emerge and begin feeding on the host. If no host has been available for a long period many adults may emerge at the same time.

Importance

- Fleas can carry diseases which affect humans.
- Bites are unpleasant and will be seen as a tiny dark red spot surrounded by a reddened lump.

Getting the Problem Under Control

- Our Officers will provide the professional help needed.
- They will inspect the property to determine the extent of the problem.
- Treatment will be carried out, normally by spraying the infested areas.
- You may continue to see fleas for some weeks after the treatment because insecticides do not affect the egg or pupal stages of the flea life cycle. However, adults and larvae will die soon after spraying and emerging adults and larvae will die off when they come into contact with the insecticide applied.