

# E16 News



St Lukes comes top  
See page 4

COMMUNITY  
SPECIAL

LATEST REGENERATION NEWS FOR CANNING TOWN AND CUSTOM HOUSE RESIDENTS | JUL 09



Above from left: Programme Director – Regeneration programme, Helen Fisher; Mayor of Newham, Sir Robin Wales; Chair, London Thames Gateway Development Corporation, Bob Lane; Chair, Bouygues Developments, Madani Sow; Councillor Pat Holland



## INSIDE VIEW

# Green light for Canning Town junction improvement

Summer is finally with us and it's been a hot few weeks. Schools will be breaking up shortly

and for those of you wondering what to do on a weekend we have our free summer funday at Keir Hardie Park on 25 July. There will be something for everyone from tea dances and children's activities, to information stalls on regeneration, healthy living advice and massages for those who want a little pampering. More details on page 11.

Good news on regeneration developments for Canning Town. The A13 junction improvements have received planning approval and work will commence from spring 2010. This key improvement will link Rathbone and our new town centre together creating a vibrant and connected area with better shopping, new homes and high quality public spaces.

Bouygues the preferred developer for the town centre has been selected by Newham Council to take forward the development for Canning Town and will be working with the council to bring forward these plans. Find out more about these plans at our Thrive funday.

We also have the updated model of Canning Town and Custom House which plots out the development sites in the area. Feel free to pop into our offices at The Place and a member of staff can talk you through what these are.

From Autumn we will be publishing E16 every two months. There is still so much to report to you that future issues will be bigger with more pages bursting with updates. This will be the last one for the summer, so we look forward to bringing you a fuller E16 in the Autumn.

**Cllr Conor McAuley**  
Executive Member for Regeneration



Planning approval has been given for a major infrastructure project in Canning Town that will see the realignment of the A13 junction.

The road currently splits the town centre in two and the project will provide and enhance pedestrian and cycle only routes under the A13. Newham Council is working in partnership with the London Thames Gateway Development Corporation (LTGDC) to create a vibrant, accessible and safe town centre with a mix of modern and independent shops, attractive public spaces, quality homes and successful businesses.

Work is set to begin on the construction of the signalised junction to replace the existing Canning Town roundabout in 2010.

Newham's executive member for regeneration, Councillor Conor McAuley, said: "The current A13 roundabout, slip roads and flyover are a major obstacle to regenerating the area.

"The removal of this roundabout will change the dynamics of the area and act as a catalyst for private investment and most importantly it will reconnect communities which have been divided by the A13."

Other works will also be carried out including:

- the removal of the existing eastern sliproads
- modifications to the Barking Road/Beckton Road junction
- the construction of a new sliproad along Rathbone Street
- new and enhanced pedestrian crossings, footways and cycle ways.

**For more information contact Keith Smith 020 3373 4662.**

# A new £500m town centre in East London



Mayor of Newham, Sir Robin Wales, said: "The city of London continues to move east and Newham is the heart of this change. This sends a powerful signal that Newham means business. This project is part of a once in lifetime opportunity to turnaround the prospects of Canning Town and Custom House residents."

Executive Member for Regeneration at Newham Council, Councillor Conor McAuley, said: "We're committed to securing the best deal to transform this area for the benefit of the community for generations to come. We're regenerating Canning Town and Custom House so that it can thrive, providing community facilities and quality 21st century housing. At the heart of our vision for the area and for Newham is mixed communities, which will build cohesion and prosperity."

Newham Council has appointed Bouygues Development, and its consortium partner One Housing Group, to develop plans to create a new Town Centre on a site opposite Canning Town station.

In partnership with the London Thames Gateway Development Corporation (LTGDC), Newham Council is working to develop Canning Town and Custom House into a thriving, sustainable place where residents and those in business choose to live, work and stay.

The appointment of a preferred development partner for the £500 million scheme marks the start of the delivery phase for one of the UK's largest regeneration programmes. It's estimated that more than £3.7 billion will be invested to improve the area over the next 15-20 years.



Cllr Conor McAuley talks to local resident Clive Nixon

## Managing your health

Do you have a long-term health condition such as diabetes, asthma, arthritis, or depression? Would you like to learn new skills to help you feel more in control of your health?

Newham PCT and the Expert Patients Programme CIC are running FREE self-management courses for people living in the borough.

The course lasts for six weekly sessions and covers topics such as dealing with pain and tiredness, healthy eating, exercise, relaxation techniques and positive thinking. The next course will begin in July.



**To find out more or book a place, contact Catherine on 0207 922 7860, or email Catherine.wilson@eppcic.co.uk**



## Congratulations to award winning Pinnacle

**Improvement work to homes in Canning Town as part of Newham Council's Public Finance Initiative (PFI) has been recognised with another award.**

The Canning Town PFI was granted the 4ps excellence award for Best UK Operational Project. The £20 million scheme is delivered on behalf of the council by Regenter London City East Partnership (LCEP).

The refurbishment works to bring 1,012 social rented properties and 230 leasehold properties to the Decent Homes standard exceeds the guidelines set by government.

The 4ps is a project delivery specialist which works with local authorities to assist with PFI schemes and partnership working to facilitate major projects.



## CONTACTS

**Canning Town and Custom House Regeneration Programme**  
The Place  
2 Silvertown Way E16 1ED  
020 3373 1443

**Newham Homes Community Housing Team**  
Local Service Centre  
Beckton Road E16 5JQ  
Or you can contact your housing officer on  
020 8430 4096

**Pinnacle**  
Beverly Varney  
Nelson Street Studios  
Nelson Street E16 1DS  
020 7540 9880

## Summer Sport

### WEEK 1

**Monday 27th July – Friday 31st July**

Multi Sports – Football, Handball, Basketball and Athletics

Venue: Keir Hardie Park

Time: 11am-1pm

Age: 8-16 years

Friday competition day

### WEEK 2

**Monday 3rd August – Friday 7th August**

Multi Sports – Football, Handball, Basketball and Athletics

Venue: Keir Hardie Park

Time: 11-1pm

Age: 8-16 years

Friday competition day

### WEEK 3

**Monday 10th August – Friday 14th August**

Multi Sports – Football, Handball, Basketball and Athletics

Venue: Keir Hardie Park

Time: 11-1pm

Age: 8-16 years

Friday competition day

### WEEK 4

**Monday 17th – Friday 21st August**

Run by West Ham United Community Sports Trust

Multi Sports – Athletics, Basketball and Tennis

Venue: Keir Hardie Park

Time: 11-1pm

Age: 8-11 year olds



## St Lukes comes top



St Luke's Primary School in Canning Town was awarded a distinction in the Sustainable Schools category in the London regional finals of the Teaching Awards.

The event which celebrates excellence and encourages best practice in teaching, took place at Westminster Central Hall in June.

Head Teacher, Theresa Aanonson, said: "All staff and pupils are proud of this award and the recognition is testament to everyone's hard work."

The Teaching Awards were presented to selected finalists in front of 200 invited guests. The ceremony offers a unique opportunity to meet and communicate with teachers, teaching assistants and governors, celebrating the achievements of schools and education professionals. All winners will go through to the national competition to be held in London at the Theatre Royal, Drury Lane in October 2009.

## Planning Application refused

A planning application for a site on **Bidder Street** that proposed 758 flats, retail space, car parking, associated plant, storage and landscaping including a new riverside walk has been refused. Newham recommended that this be refused due to its industrial nature such as noise and odours and lack of suitability for the location.



## CrossRail update

**Crossrail is the new railway for London and the South-East.** It will make travelling in the region much easier and quicker, connecting people from a variety of locations such as Heathrow, Canary Wharf and the West End. Custom House will be one of the locations along the route and the Council is working with a range of partners to ensure that residents get the best from this development. Not only will this development bring better access to various transport services but create jobs and regenerate the local area.

Main construction of the railway will begin in 2010, with services commencing in 2017. The Custom House station schedule of works is timetabled for 2013.

## Hurry – while stocks last

Since our last Newsletter, the interest in the community garden scheme has trebled, with only a few remaining allotment spots.

The purpose of the community garden scheme is to give people the opportunity to grow fruit and vegetables or flowers in their own little spot, with help and assistance from our team and experienced growers whom will be on the site.

The site will be split in two, one half will be individual allotments, the other half will be for local groups to take part. So if you would like to be part of either please get in contact now. To put your name down for an individual plot please call Sarah Braithwaite on 0203 3738537

## Getting tough on vehicle crime

**In March 2009 after consultation with local residents who had voiced their concerns, police mounted a three week vehicle crime initiative around the Freemasons Road and Prince Regent Lane area.**

The Safer Neighbourhoods Task Team used tactics such as plain clothes patrols in cars, on pedal bikes and in static locations. Officers patrolled alleyways used as escape routes by suspects and a decoy car was used. Youth workers and officers engaged young people to get them to attend one of the local youth centres. Two search warrants were executed on addresses identified as being used for handling stolen goods; this resulted in a quantity of drugs being recovered from one of the premises.

Using preventative legislation police carried out 191 stop and searches. There were 11 arrests for various offences including theft of motor vehicle and firearms offences after officers recovered a loaded revolver. Three cannabis warnings were also issued.

As a result of the initiative there has been a significant drop in reports of theft from motor vehicle. Police will continue to patrol the area, but would like to remind local residents of the importance of contacting them on 999, if they see crimes being committed. In non-emergency cases contact your local safer neighbourhoods team or you can call 0300 123 1212.



# Making it Count

COMMUNITY SPECIAL

It is now just over a year since The Place opened its doors to the public. Opposite Canning Town Station the distinctive pink and green building has become a familiar part of the local landscape. The Place is the home to the Canning Town and Custom House Regeneration Programme and Workplace.

Workplace provides services to help Newham residents find employment and access training. The Regeneration Programme is working to transform Canning Town and Custom House into a place where people choose to live, work and stay. Our team works closely with the community in a number of ways:

- working with residents who need to move home because of the regeneration
- helping to tackle local issues affecting quality of life by working with residents to identify local priorities
- keeping the community involved in, and informed about, regeneration developments.

The last year has been very busy providing a number of opportunities for community members to get informed, get involved and give their views.



April 2008

## Neighbourhood Group Meetings

Open meetings in each of the four neighbourhood group areas were held to discuss concerns affecting local residents' quality of life. 62 people attended.

June 2008

## Canning Town – Centre of Attraction.

Drop-in exhibitions were held at The Place and The Hub, giving an overview of the vision for the town centre including its expansion, A13 junction improvements, and plans for Rathbone Market. 75 people attended.



## Neighbourhood Group Meetings

Open meetings in each of the four neighbourhood group areas were held to discuss concerns affecting local residents' quality of life. 47 people attended.



## Regeneration Area Youth Forum

Open meeting for young people 13-18 yrs to discuss issue affecting young people (e.g. regeneration, quality of life, youth projects). 9 young people attended.

July 2008

## Meet at The Place

Provided an opportunity for local residents to visit our new offices at The Place, meet the staff, find out more about our work and enjoy some fun activities. 100 people attended.

## Newham Town Show

55,000 people attended the two day event at Central Park.

## Thrive 2008

Provided an opportunity for the local community to come together and enjoy free fun activities as well as get information from local organisations. Thrive was attended by over 600 people.

August 2008

## Regeneration Area Youth Forum

Open meeting for young people 13-18 yrs to discuss issue affecting young people (e.g. regeneration, quality of life, youth projects). 6 young people attended.

September 2008

## Rathbone Market Public Exhibition

Organised by the Council's preferred developer ECf, held to outline proposals for the market. Over 200 people attended.



October 2008

## Neighbourhood Group Meetings

Open meetings in each of the four neighbourhood group areas were held to discuss concerns affecting local residents' quality of life. 64 people attended.

November 2008

## A drop-in exhibition of the A13 junction improvements

Held at The Place and The Hub to explain proposals including the replacement of the roundabout with a junction. 50 people attended.

December 2008

## Regeneration Area Youth Forum

Open meeting for young people 13-18 yrs to discuss issue affecting young people (e.g. regeneration, quality of life, youth projects). 15 young people attended.

January 2009

## Neighbourhood Group Meetings

Open meetings in each of the four neighbourhood group areas were held to discuss concerns affecting local residents' quality of life. 62 people attended.

February 2009

## Regeneration Area Youth Forum

Open meeting for young people 13-18 yrs to discuss issue affecting young people (e.g. regeneration, quality of life, youth projects). 7 young people attended.

March 2009

## Public exhibition on the Future of Canning Town

Organised as part of the process of selecting a developer for the town centre sites at Canning Town. Held at The Place for community members to comment on potential developers' proposals for the town centre. 150 people took part.



1175 visits to Canning Town and Custom House Regeneration consultation events during 2008/09.

235 people attending Neighbourhood meetings during 2008/2009.

37 young people attending Youth Forum meetings during 2008/2009.



## Getting young people to learn the business

East London Business Alliance (ELBA) has been working with the Canning Town and Custom House Regeneration Programme over the past 18 months as part of a three year long project working with schools and youth projects within the area.

Funded by London Thames Gateway Development Corporation, Morgan Stanley, Accenture and Man Group the project aims to get companies from the City and Canary Wharf supporting schools and youth providers through a variety of ways. This has ranged from volunteers from HSBC mentoring students at Royal Docks Community School to a group of volunteers from London City Airport painting and decorating classrooms at Keir Hardie School.

Project Manager, Anna France said: "Even though we are only half way through the project we have had over 1000 volunteers from 28 companies support the young people in Canning Town and Custom House. Our volunteers sit on the governing bodies of local schools, are trustees of community groups, plan days for students to attend their workplace and hold workshops to increase the employability skills of young people. There is a real commitment from ELBA to ensure that business skills and experience contribute to the regeneration of this area."

## E16 meets local inspiration for youth

Sally Rogers is the Manager of the Canning Town Youth Inclusion Programme (YIP). She has been a youth worker for almost ten years, grew up in Newham and spent three years living in Canning Town. She said "I feel very much at home coming to work here. Having worked for a few years in a very successful project in Forest Gate, when an opportunity arose to manage the Canning Town YIP, I jumped at the chance".

Sally is part of a small team "It's a great team with many years of experience under our belts. We are very creative and always keen to hear new ideas from young people about the things that they would like to do, no matter how crazy they sound".

The team encourages young people to get involved in the community; she said "We also strive to get young people into initiatives which involve residents. I think this

## Keir Hardie pupils go Spanish



A group of Year 6 students from Keir Hardie School spent the morning at London City Airport learning about how languages are used in the workplace and getting a chance to practice their Spanish. The visit organised by Elba was a chance to show how language is used at work.

The students, who have been learning Spanish for two years, had a tour of the airport in both Spanish and English and learnt new vocabulary as they went along.

They then had the opportunity to write a postcard about their holidays using as many Spanish words as possible. Year 6 teacher Nicola Feathersone who accompanied the students said "The children found being able to write a postcard using English and Spanish both a challenge and an inspiration at the same time. They realised that you do not have to be fluent, but there is great value in using what you know."



Sally Rogers and team

really helps to break down some of the barriers between young people and society in recent years".

Sally talks of youth work fondly, "When you work with young people every day you laugh so much and so often that everyday is funny and memorable."

**For more details about the Canning Town Youth Inclusion Project contact Sally Rogers 020 8519 9073.**

## Workplace celebrates with cake

After 12 months, Workplace Canning Town has found employment for 254 residents and provided valuable training for another 328. Newham Mayor Sir Robin Wales said the program is in line with the Borough's commitment to ensure local residents reap the rewards of regeneration in the area.

He said: "Workplace provides a pool of well-trained and reliable staff for businesses that are benefiting from growing opportunities in the borough, including the 2012 Olympic and Paralympic Games.

"In these challenging economic times it's essential that residents are given extra help to gain employment. The success that's been achieved here in Canning Town in only one year shows just how beneficial the Workplace programme is."

## Interested in becoming a cheerleader?

**Cheerleading is one of the fastest growing sports in the UK.**

Not only do you get fit, but you also develop leadership and confidence. Places are limited for some activities. Get your friends together and sign up quickly to secure your space. For training sessions wear comfortable training kit, no jewellery, hair tied back and be ready to BRING IT!

All London Cheerleading Academy training sessions are led by fully qualified coaches, supported by London Borough of Newham.

### JOIN NEWHAM'S CHEER AND DANCE TEAMS:

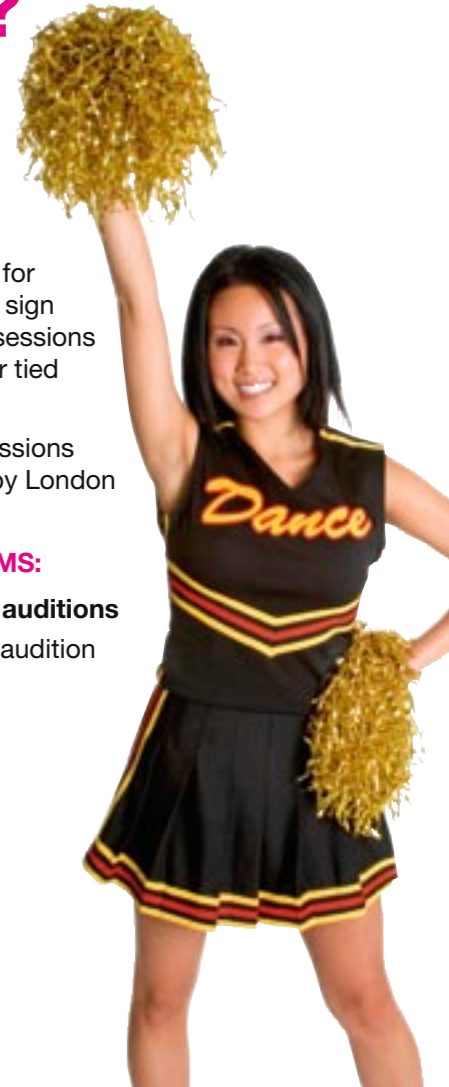
#### Ascension Eagles Cheerleaders 2009-2010 auditions

It only happens once a year! You must attend audition workshops to prepare for the tryouts.

Audition fee £8, includes three workshops:

- 6th September, 1.30-4.30pm, Royal Docks School
- 7th and 11th September 4.30-6pm ages 7-11 6.15-8pm ages 12-14
- Saturday 12th Sept: TRYOUT DAY, Ascension Church Centre

[www.ascensioneagles.com](http://www.ascensioneagles.com)  
[director@ascensioneagles.com](mailto:director@ascensioneagles.com)



## Coming up at the Hub

### Salsa at the Hub – and it's free!

Salsa is great exercise and a great way to meet new people. Don't worry if you're a beginner, everyone can learn to Salsa!

**Every Tuesday, 6.30-8.30pm (until 28 July 2009)**

No need to book, just turn up!

The Hub, 123 Star Lane, Canning Town E16 4PZ

*Funded by Newham Council and West Ham and Plaistow New Deal for Communities (NDC)*

### Tai Chi at the Hub – and it's free!

Tai Chi is a great way to relax and exercise.

**Every Saturday, 2-3pm (until 12 September 2009)**

No need to book, just turn up!

The Hub, 123 Star Lane, Canning Town E16 4PZ

*Funded by Well London and West Ham and Plaistow New Deal for Communities (NDC)*



## Ferrier Point update – Construction work begins

Construction work at Ferrier Point has now begun following the set up of site offices and the erection of mast climbers, passenger hoist and scaffolding to gain access to the external elevations of the building. Rydon are currently carrying out surveys and repairs on the existing concrete structure before the new insulated rainscreen cladding system installation begins.

The Rydon site team and the architect (E.C.D) in conjunction with London Borough of Newham have been holding regular meetings with the Ferrier Point Residents Design Steering Group to finalise the colour selections for the new kitchens, tiles, flooring and wall paint. Five combinations have been selected for the kitchens and five for the bathrooms and toilets along with the Newco Kitchens selections available.

Contact Rydon's resident liaison team Freephone 0800 023 1757.



## Pride of Place

Pride of Place is an exhibition based on images provided by local residents of Canning Town and Custom House history



opened for viewing this month at Newham's Regeneration offices at The Place in Canning Town. The images incorporate key moments in the 20th century history of Canning Town and Custom House.

Community Lead Councillor Cllr Pat Holland said: "This area has seen a great deal of change over the decades. We have several generations of families who have lived through iconic events. From Royal coronations to community spirit through the Second World War these images all tell a local story.

"Some of these photos from residents are about their personal memories and connections to the area. We are delighted with the huge contributions that local people made towards this exhibition. We hope people take the time to see these memories first hand."

Drop by and see if the photos bring back any memories.

## Open door policy

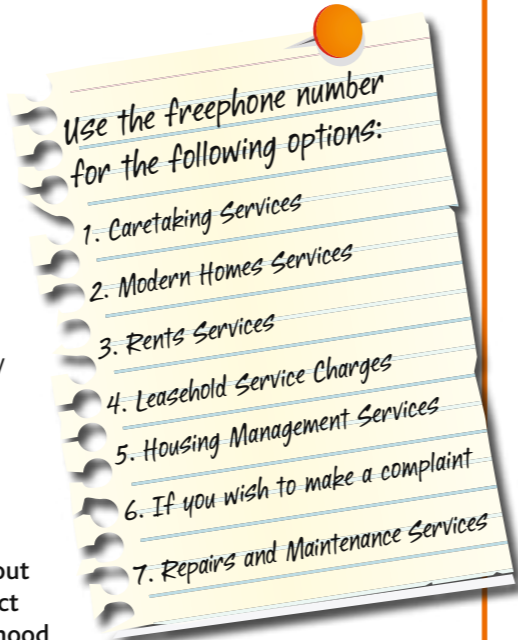


Newham Homes always seek out new ways to increase and improve resident involvement in the services it provides to all its users.

So, it now runs a weekly Tenancy Surgery in the Regeneration Office, The Place, Silvertown Way every Wednesday, 10.30-11.30.

The Surgery is a drop-in service without appointment and is open to all tenants and leaseholders to discuss any tenancy and housing management issues. All information from residents is treated with the utmost confidence.

For more information about the Surgery, please contact Luke Egemba, Neighbourhood Services Manager on 020 8430 3200 or email: [luke.egemba@newhamhomes.com](mailto:luke.egemba@newhamhomes.com)



The freephone number will ensure that Newham Homes key services are more accessible to residents and addresses some of the financial pressures upon them. This freephone will be functional 24 hours a day, 7 days a week.

**0800 952 9000**

# Thrive 2009

Get set for a summer funday



25 July 2009  
Keir Hardie Park  
11.30am-4.30pm



- Teadance • Sports • Live music
- Information on regeneration
- Food tasters • Bouncy castle and much more ...

**HOW TO GET THERE:** Keir Hardie Park is located at Appleby Road, Tarling Road and Radland Road.  
**BUSES:** 147, 241 Underground/DLR: Canning Town

# what's on

## Police Surgery

Thursday 6th August  
11am-1pm

The Place, 2 Silvertown Way,  
Canning Town E16



If you have any concerns about your local area like anti-social behaviour or crime, come and talk to us. An officer from Canning Town South Safer Neighbourhood Team will be available to listen and talk to you in confidence.

For more information please contact: Sergeant Steve Micallef on 020 8721 2840 or email: [canningtownsouth.snt@met.police.uk](mailto:canningtownsouth.snt@met.police.uk)

## Pinnacle

**PINNACLE WALKABOUT**  
Every Friday at 2pm or  
on request

**PINNACLE RESIDENT PANEL MEETINGS**  
28th July, 25th August and  
29th September. 6.30pm at  
Ruscoe Road sheltered unit

## Independent advice for residents

Independent advice and support is available to residents living in the Canning Town and Custom House Regeneration Area.

If you have any questions about how the proposed plan will affect you contact:

**Solon Community Network**  
free of charge on

**0800 8840 800**

9am-5pm, Monday to Friday.

Email [info@solontp.org.uk](mailto:info@solontp.org.uk) or  
visit [www.solontp.org.uk](http://www.solontp.org.uk)

All queries will be dealt with  
in confidence.



## Drop-in surgeries

Every Thursday between 12 noon-1.30pm at  
Cundy Road Centre, Harrington Road, E16.

Every Wednesday between 10-11.30am at  
The Place, 2 Silvertown Way.

Surgeries will be attended by Neighbourhood Services Manager, who will aim to answer queries you may have relating to housing issues such as anti-social behaviour, supporting tenants and any tenancy management Issues.



For more information please ring their  
freephone number **0800 952 9000**

**11079**

Monday - Friday 9.00am - 5.00pm



For free translation phone

Për një përkthim falas telefononi

للترجمة المجانية الرجاء الاتصال هاتفياً.

বিনামূল্যে অনুবাদের জন্য টেলিফোন করুন

Za besplatne prevode pozovite

徵索取免費譯本，請致電。

Pour une traduction gratuite, téléphonez

Για δωρεάν μετάφραση, τηλεφωνήστε.

ਮਨ ਮੁਫਤ ਅਨੁਵਾਦ ਲੈਣ ਲਈ ਆਹਿ ਵਾਕੋ.

निःशुल्क अनुवाद के लिए कृपया फोन कीजिए

بو تەرجومە کرێنی بە خۆزبانی تە لە فون بەکە بو

Del nemokamo vertimo skambinkite

സൗജന്യമായ തർജ്ജമയ്ക്കായി ബന്ധപ്പെടുക

Po bezplatne tlumaczenie prosimy dzwonić:

Para uma tradução grátis, telefone.

مۇفت تەرجومە ئۈچۈن تەلەپ قىلىڭ.

Перевод – бесплатно. Звоните.

Para obtener una traducción gratuita llame al:

Turjubaan la'ag la'aan ah ka soo wac telefoonka

இலவச மொழிபெயர்க்கும் சேவையைப் பெறவும்.

Ücretsiz çeviri için telefon edin.

Điện thoại để được thông dịch miễn phí.

مفت ترجمے کے لیے ٹیلیفون کیجیے۔

For large print or braille phone

**0800 952 0119**

© Newham Language Shop