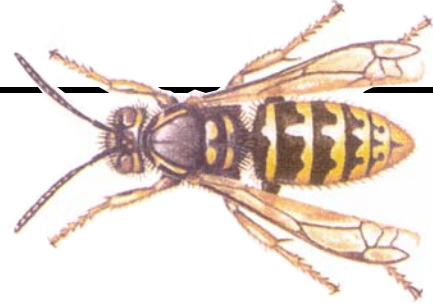


# WASPS



## Pest Control Factsheet

The wasp is probably the most familiar but generally disliked of all British insects.

### Description

- Easily identified by their black and yellow bands, the workers are 10 - 15 mm long. The queen is larger but usually only seen in the spring and autumn.
- Nests are made from chewed wood mixed with saliva and may be found underground or in cavities in trees, walls and buildings.

### Life Cycle

- New queens leave the nest in autumn after mating and find a place to hibernate for the winter.
- All the remaining wasps die when the weather gets cold.
- The queens wake up in spring and select a new nest site – old nests are not used again.
- The queen lays eggs and raises the first workers. She then stays in the nest and it is continually enlarged by the workers as the colony grows.

### Importance

- Wasps can be a nuisance but do not commonly spread disease.
- Stings are painful but usually cause only short-term discomfort. **Caution – multiple stings can be dangerous and some people can be severely affected by a single sting – if in doubt, seek medical advice.**

### Getting the Problem Under Control

- Our Officers will provide the professional help needed.
- They will inspect the property to determine the most effective way to deal with the nest.
- Treatment will be carried out, normally with an insecticidal powder. One visit is usually all that is required.

## Advice for Clients

The Officer carrying out treatment for you will explain what has been done. One visit is usually sufficient to clear a nest but wasps will often be seen outside around the entrance for a few days.

There are a number of ways you can help to reduce the general nuisance caused by wasps: -

### Hygiene

- Clean up food and drink spillages immediately, especially if they are sweet or sticky.
- Remember the garden and clear up after a barbecue or party.
- In the autumn, if you have fruit trees or bushes in the garden, pick up fallen fruit before it rots.
- Clean pet food bowls after feeding.

### Housekeeping

- Keep food covered, in sealed containers or in the refrigerator.
- Replace caps on drinks bottles.
- Keep waste in a bin with a lid.
- Make sure the dustbin and area around it is kept clean and keep the lid on.

### General points

- Wasps sting when they are alarmed or threatened so try to stay calm and allow them to fly away.
- It is not essential to remove old wasps nests if you find them as they are not used again **but take care and contact us if you are unsure – *breaking up an active nest could be very dangerous.***