

# **JUST TRANSITION PLAN**

**Delivering On Our 3-6-5 Vision**

**2-Year Impact Report**

# Contents

03	<u>Foreword</u>
04	<u>The Climate Story</u>
09	<u>Just Transition in Action</u>
13	<u>Our Futures</u>
20	<u>Enabling Our Next Steps</u>
27	<u>Our Journey, Resources &amp; Partners</u>

# FOREWORD

We declared a climate emergency in April 2019, and since then we’ve been at the forefront of delivering meaningful climate action here in Newham, through our award-winning Just Transition Plan launched in 2023.

Fundamental to our actions is ensuring that our transition to net zero is ambitious and fair. By placing equity at the heart of our climate action, we are addressing the disproportionate burdens of climate change faced by our residents, as we build a more resilient, sustainable and thriving Newham for generations to come.

Our road map towards delivering our just transition highlights that solving the climate crisis isn’t just about decarbonising but delivering real benefits that our local people can see and feel.

Our Just Transition Plan, the first by any local authority in the country, is already delivering tangible results: unlocking retrofit and heat decarbonisation at scale; creating agency for residents to participate in the energy transition through our community energy programmes; and building resilience to extreme temperatures and future flash flooding through pocket forest programmes in strategic borough locations.

Significantly, we’ve sparked a collective just transition movement across London and nationally and are inspiring change at every level of government as well.

In implementing our Just Transition Plan, we’re making improvements to the health and wellbeing of our residents by eradicating damp and mould in homes and reducing energy bills as well. We’re improving the air our children and youngsters breathe through our Healthy School Streets programme and planting more trees. We’re also supporting residents to save money through Community Energy Newham; and reduce waste by introducing separate weekly food waste collections that will go borough-wide next year.

We know that the climate crisis is here and real. It is felt in our borough and across communities all over the world. That’s why we approach our Just Transition Plan through a global lens, because we know that those most affected, and least responsible, can be least empowered to direct and affect change.

It’s also why here in Newham we take action to protect our diverse communities courageously, because we have an obligation to our people now and our future generations to come. We are building a collective shared commitment among our residents, businesses, educators, faith, voluntary and community leaders because it is vital as the future of humanity and the planet is at stake.

This Just Transition Plan: 2-Year Impact Report serves as a record of our progress so far, but importantly it’s a testament to our enduring commitment to progress with our people for a better, greener and fairer Newham for all - now and in the years to come.



**Rokhsana Fiaz OBE**  
**Mayor of Newham**



**Cllr John Whitworth**  
**Cabinet Member for Air Quality**  
**Climate Emergency & Environment**

*“Our climate is at a breaking point [...] we face a global governance deficit and global trust deficit. Poverty, inequalities and the climate crisis are getting worse.”*

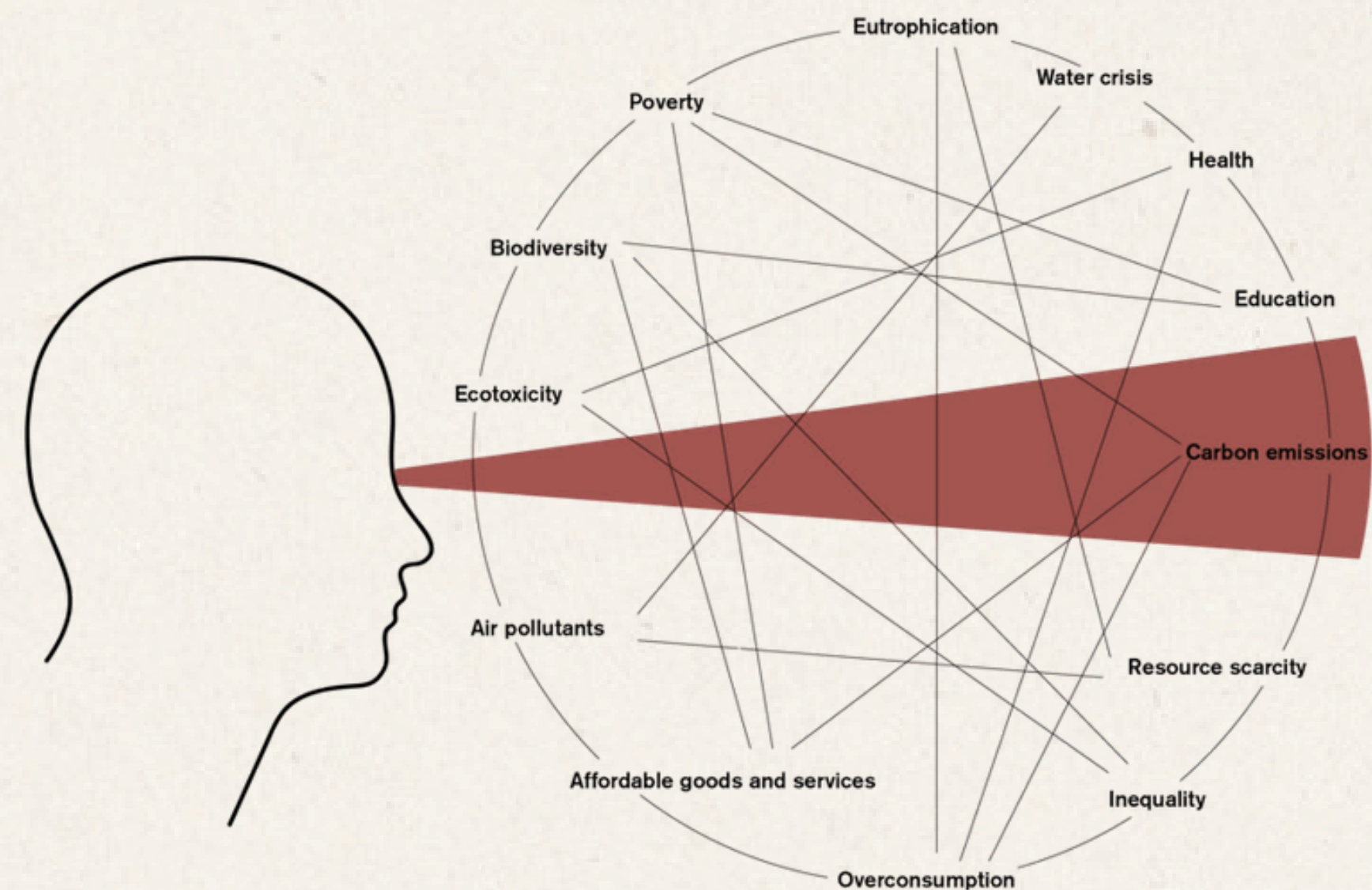
*[António Guterres, Secretary General of the United Nations]*

# THE CLIMATE STORY



# THE GLOBAL STORY

We are in the midst of a radical shift in our society and economy. The current risk landscape is reshaping the systems we rely on; from rising food and energy costs to disrupted supply chains and humanitarian needs, these global pressures are intensifying inequalities at a local level. In Newham, this means our path to a just transition must respond to this **interconnected set of challenges** and address the compounding effects of conflict, cost of living, and community resilience, amongst others.



Graphic adapted from: Current Risk Landscape | World Economic Forum Global Risks Perception Survey, 2024-25

Moving beyond a 'carbon tunnel vision' | Just Transition Plan, 2023

# THE NATIONAL STORY - UK

## WE MUST BUILD TRUST AND HOPE IN CLIMATE ACTION

We need to show that climate action and the path to Net Zero can tackle inequality and the UK's cost of living crisis, while also delivering clear benefits such as long-term savings, new jobs, better health, and economic innovation.

## POLICY NEEDS TO REFLECT THE URGENCY OF CLIMATE CHANGE

Not all national policy reflects the urgency of the climate emergency. It is vital that that UK regulation and policy facilitate, rather than inhibit a just transition, particularly when it comes to driving energy efficiency and climate adaptation.



## THERE'S MONEY OUT THERE, BUT BARRIERS NEED TO BE REMOVED

The scrapping of the Public Sector Decarbonisation Scheme (PSDS) shows we can't rely on government grants alone, yet local authorities still struggle to reach the scale private investors require. Councils need more flexible government funding and must address how red tape may deter private investment.

## GREEN GROWTH WILL DEPEND ON AN UPSKILLED WORKFORCE

Limited staff capacity and ongoing green skills gaps within the construction and retrofit sectors are slowing the pace of delivery, with demand outstripping supply. Investing in green skills can help remove a significant barrier to progress in delivering on the UK's legally binding Net Zero targets.



# THE REGIONAL STORY - LONDON

## LONDON IS GOING TO MISS ITS 2030 NET ZERO TARGETS

With only five years left to 2030, it’s clear that London is not on track to hit its goals.

Despite some incredible work across the city, investment in climate solutions needs to increase significantly if we are to turn the tide. The speed of change is still lagging behind where it needs to be.

## CLIMATE ACTION, GROWTH AND THE HOUSING CRISIS ARE INTERLINKED

London homes are often poorly insulated, overcrowded, and prone to damp and mould, compounding the wider housing scarcity. Tackling housing and climate issues together is essential to protect communities’ health and wellbeing and supports broader government growth and housing targets.



## ADAPTING OUR WORKFORCE THROUGH INCLUSIVE PATHWAYS

Across London, including Newham, green sectors like construction and retrofit need more skilled local talent to support a net-zero future. The London Growth Plan highlights green skills development, and by creating inclusive pathways, residents can access high-quality jobs, boosting productivity, advancing climate action, and ensuring opportunities reach people from all backgrounds.

## ADAPTATION-FOCUSED DESIGN IS A NECESSITY

London is not built for heat, and we’re seeing this as our summers get hotter each year.

We need to redesign streets, public spaces, and buildings to manage rising temperatures and flooding, protecting Londoners’ safety, wellbeing, and the city’s resilience.



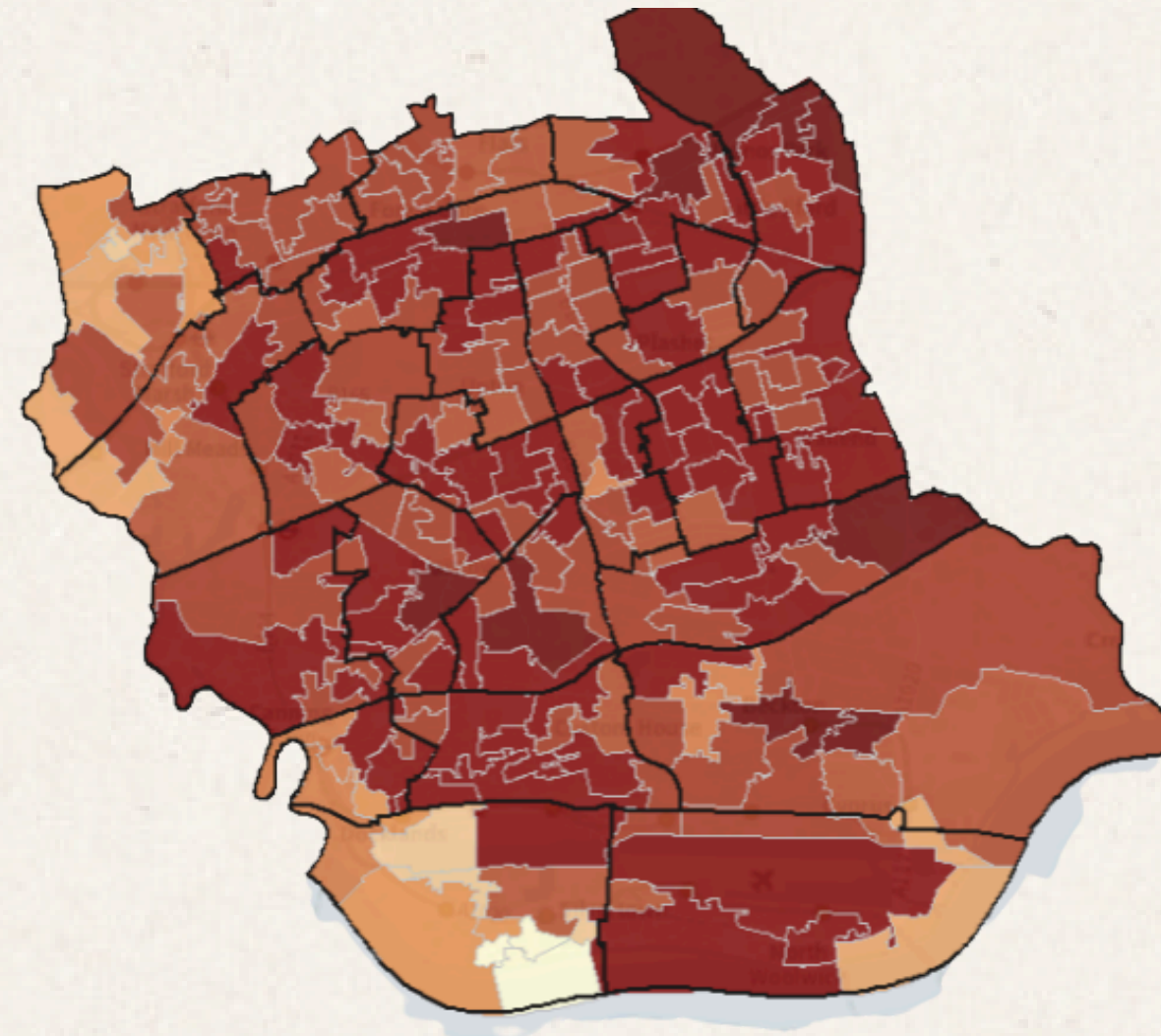
# THE LOCAL STORY - NEWHAM

## REIMAGINING LOCAL CHALLENGES TO ACTIVATE GROWTH

Amidst a number of challenges, Newham faces low income, child poverty, scarce job opportunities, and growing isolation in an ageing population<sup>1</sup>. These pressures call for mobilising challenges into opportunities to grow, upskill, invest in our people, and build intergenerational spaces for connection, dialogue, and shared action.

## SUPPORTING A RESILIENT SOCIAL INFRASTRUCTURE FOR A CHANGING BOROUGH

As one of the fastest-growing boroughs, with many of our residents often in transition or moving between homes, a strong community infrastructure is essential. This means nurturing our communities to build resilience and create systems that help our social spaces to adapt in an increasingly dynamic landscape and make sure growth delivers real benefits for our people.



## NEED FOR PLACE-BASED PARTNERSHIPS BETWEEN PUBLIC, PRIVATE AND VCFS SECTOR

As a large borough with diverse neighbourhoods and many community groups, we need stronger partnerships and better communication across the council, local groups, and businesses. We're addressing this through place-based initiatives, such as our Royal Docks Sustainability Network, to connect and coordinate action locally.

## NAVIGATING BETWEEN CLIMATE URGENCY, CARE AND CONNECTION FOR OUR RESIDENTS

Our residents show a deeper awareness and urgency around climate action than the London average<sup>2</sup>, yet face structural pressures – rising living costs, care responsibilities, and global mobility – that weigh heaviest on our diverse communities, who carry systemic inequities and the mental health toll of living across multiple realities of the climate emergency.

Sources: 1. Index of multiple deprivation, London Borough of Newham, 2025  
2. Dr Mike Medas, Newham Green Economy Transition, UEL, 2025



# JUST TRANSITION IN ACTION

*“This initiative is about delivering local government’s cultural shift to net zero. Newham's Just Transition [Plan] demonstrated a truly unique approach to delivering wide ranging climate change projects. The breadth of initiatives and integration across private sector and community partners delivered by a small team was underpinned by strong leadership and a clear problem-solving approach”.*

*[Local Government Chronicles, LGC Awards’ Winner Review, 2025]*

# WE ARE BUILDING A SHARED NARRATIVE FOR A JUST TRANSITION

Across London, the idea of a just transition has become more widely understood, not just as a climate framework, but as a collective shift in how we live, work, and care for each other.

This growing awareness has created space for a more intentional narrative: one that connects local action with broader systems change, and invites collaboration across sectors and communities.

Our just transition principles ensure that we are looking beyond net zero targets:



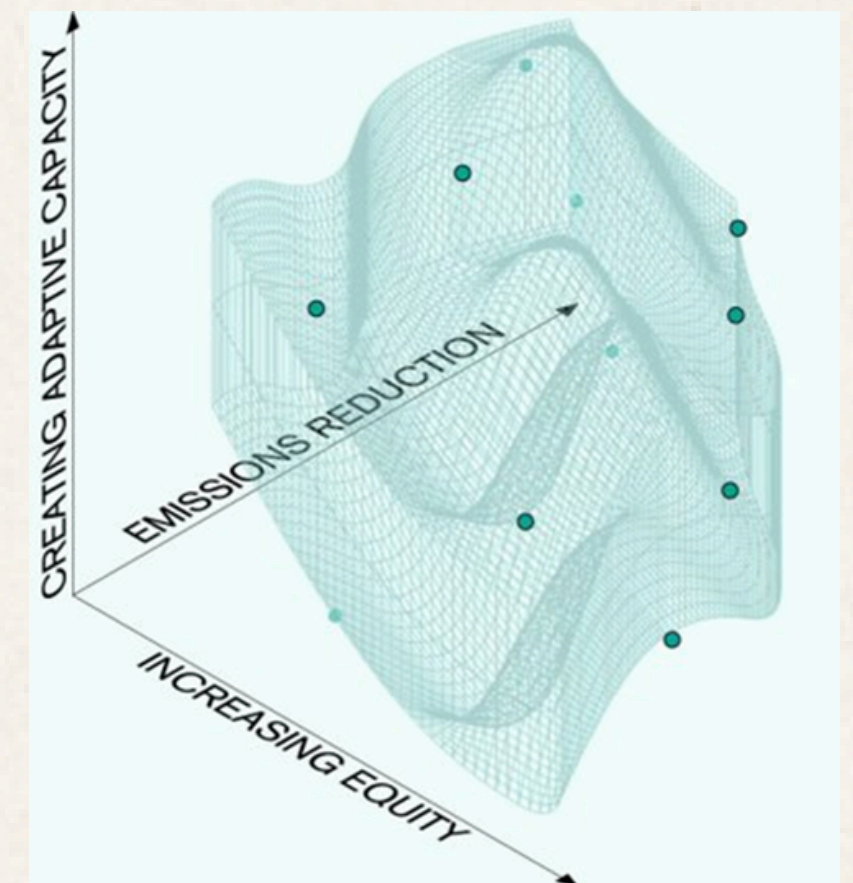
Increasing equity



Reducing emissions



Building future readiness.



# HOW WE'VE BUILT OUR PRINCIPLES INTO OUR WORK

## ADDRESSING INEQUALITY THROUGH CLIMATE ACTION

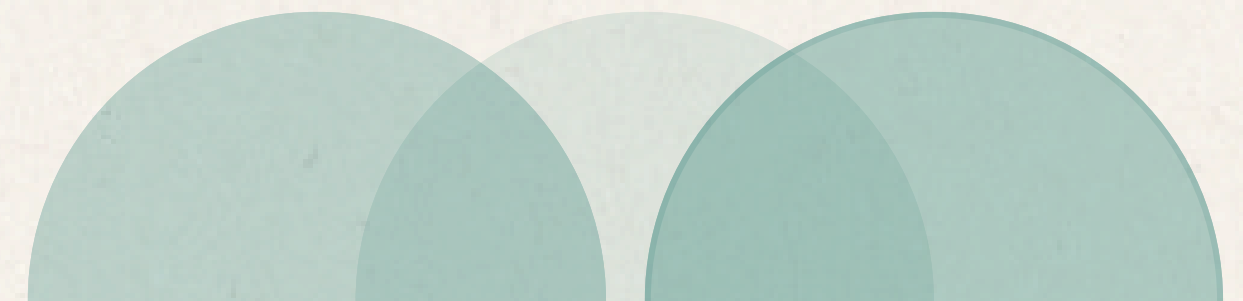
Global conflicts, climate disasters, and displacement are deeply affecting our communities, worsening local inequality. These pressures highlight the need to ensure our work is rooted in lived experience and shared responsibility across sectors, addressing inequalities and the web of interlinked crises that connect the local with the global.

## PREPARING FOR 1.5°C+ NEIGHBOURHOODS

As one of the boroughs most exposed to rising heat and flood risks, it's essential that we design for our future climate. Every project must build in real adaptation now and plan for a 1.5°C + future so our neighbourhoods remain safe, liveable, and genuinely fit for the world we're heading into.

## LEADING WITH CO-BENEFITS

Shifting our conversation and emphasis away from the technical to ensure that we are centring the real needs of and impacts on our communities, businesses, and schools. This means prioritising projects that deliver greater benefits to our residents' health and wellbeing, safety, employment needs and financial security.





# BORING MATTERS: WE ARE ADAPTING COUNCIL SYSTEMS WITH MORE AGILE PROCESSES

Climate-driven system change aims to make our council processes more dynamic, modern and effective. We are working on breaking down siloes, embedding just transition thinking and identifying cost saving actions.







Our homes, workplaces and schools are comfortable, healthy and efficient



Our energy system is resilient, equitable and not dependent on fossil fuels



We prefer to walk, cycle or use public transport and goods are safely moved without polluting our streets



We increase sharing and reduce waste building a sharing and circular economy



We eat well and sustainably



Our neighbourhoods are resilient, connected and green

# OUR FUTURES

Turning our just transition principles into action through real projects from our 6 Futures



# OUR HOMES, WORKPLACES AND SCHOOLS ARE COMFORTABLE, HEALTHY AND EFFICIENT



*The UK's building stock needs significant work to bring down bills and make spaces more comfortable. Retrofit is a huge priority in Newham because we need to upgrade our existing homes and buildings to make them warmer, healthier, and more energy efficient. This is vital to **tackling the cost of living crisis** and issues like **damp and mould**.*

*Through the Warm Homes Programme and wider retrofit work at schools and other public buildings, we're improving living, studying and working conditions for our residents. This includes exploring options for **low carbon** heating as we move away from gas boilers, but doing so carefully to ensure that decarbonisation does not lead to higher costs.*

## INCREASING EQUITY BY CUTTING BILLS IN 359 SOCIAL HOUSES

By upgrading hundreds of council homes with better insulation, solar panels and energy efficiency measures, we're helping families **cut bills** and tackle **damp and mould** – making homes warmer, safer and more comfortable.

## REDUCING EMISSIONS WITH INSULATION, HEAT PUMPS AND SOLAR

In addition to social homes, we're also **cutting carbon** across our school and corporate estate. Roman Rd, Central Park and Plashet schools will soon benefit from new heat pumps and insulation, saving **190 tonnes of carbon** per year.

## INVESTING IN GREEN SKILLS TO BUILD FUTURE READINESS

Our Net Zero Neighbourhoods and Repowered Community programmes not only explore innovative finance models to reduce our reliance on short-term grants, but seek to **unlock green skills** and **local supply chains**. This is all part of a joined-up strategy that connects housing, health, and community wellbeing.

## WE'VE ALSO BEEN WORKING ON...

- Partnering with Living Places to pilot private finance models to expand retrofit delivery.
- Environmental sensors pilot in two tower blocks – early detection of **damp and mould** and data led insights to inform retrofit priorities.
- Supply chain and skills development – tackling shortages in retrofit contractors and design expertise.
- Decarbonising schools and Canning Town Old Library with **£1.8m Public Sector Decarbonisation Scheme** (PSDS) funding.
- Implementing the schools energy efficiency and decarbonisation (SEED) programme with RAFT to **reduce costs and carbon** in schools.
- Private sector **retrofit engagement** – identifying barriers and funding routes for landlords and leaseholders.
- Delivering **community solar projects at 3 schools** with **£244k** of Greener Schools funding
- Collaboration with community energy projects – linking **solar** and **energy efficiency** upgrades for deeper impact.

## IMPROVING OUR BUILDINGS WITH RETROFIT





# OUR ENERGY SYSTEM IS RESILIENT, EQUITABLE AND NOT DEPENDENT ON FOSSIL FUELS



*In April 2024, cabinet approved Repowering London as Newham's community energy partner and delegated authority to the Director of Climate Action to agree community energy contracts.*

*Through this partnership, we're democratising our local energy system and expanding Community Energy Newham. This not only helps us to decarbonise our estate and bring down bills, but offers Newham residents a chance to own some of the local energy infrastructure.*

*Having conducted solar scoping of the borough's public building roofs, we now also have a pipeline of solar projects as we look to scale up in the coming years.*

## INCREASING EQUITY WITH COMMUNITY OWNED SOLAR

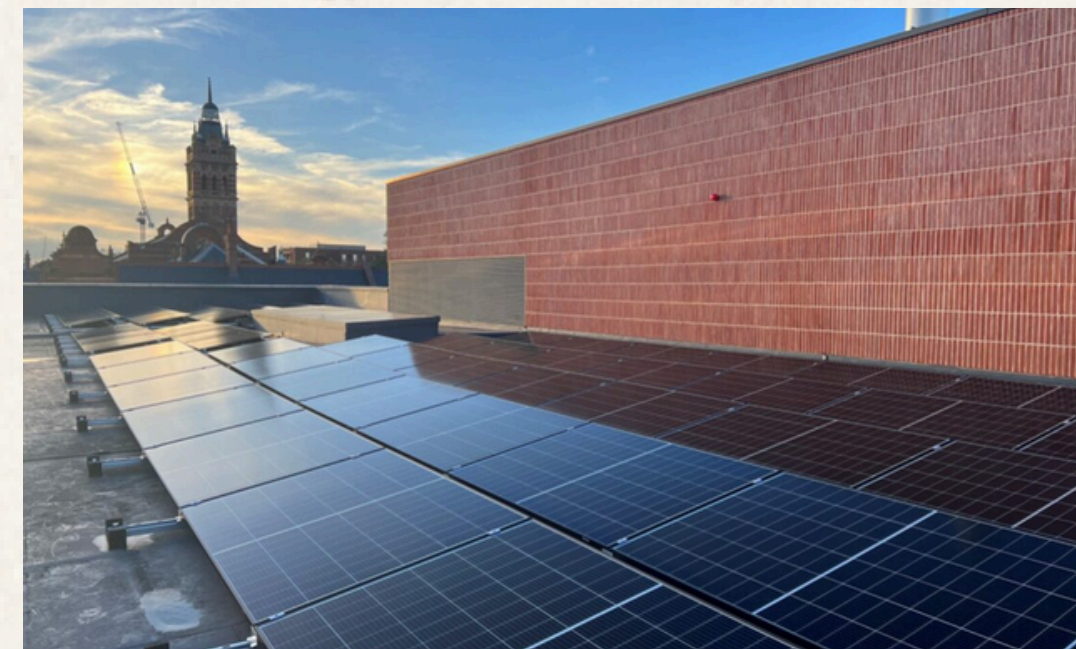
Newham's **first share offer raised £120k** to bring the three library installations into community ownership. Selected sites not only benefit from lower energy prices, but also see money, skills, and decision-making stay firmly rooted in the **local community**.

## REDUCING EMISSIONS WITH LOCAL RENEWABLES

Solar panels on **5 schools and 3 libraries** are cutting carbon and inspiring residents to take part in climate action. The 8 solar arrays help **reduce emissions by 120 tonnes per year** and build pride in a greener Newham.

## BUILDING RESILIENCE THROUGH GREEN SKILLS AND LOCAL ENERGY

Locally produced electricity can guard against price fluctuations in **global energy markets**, protecting schools and other public buildings. Community energy can also help prepare Newham for the next generation of **clean jobs** and **local innovation**, as well as increasing **investment** in the borough.



## WE'VE ALSO BEEN WORKING ON...

- The new Local Plan (currently at Examination in Public) will ensure that all **new buildings** are built to be net zero carbon in operation.
- **Energy masterplanning** through North London Local Area Energy Plan (LAEP).
- The **Stay Warm in Newham** programme brought Groundwork Green Doctors support to residents in need.
- Exploring the technical and financial viability of **waste heat networks**
- Guiding residents towards IZ Energy and Repowering London for **ECO4 delivery**
- Training sessions on food, fuel and money for residents to counter cost of living

# ENERGY PROFITS TO COMMUNITY POCKETS





# WE PREFER TO WALK, CYCLE OR USE PUBLIC TRANSPORT AND GOODS ARE SAFELY MOVED WITHOUT POLLUTING OUR STREETS



*The last two years have seen Newham make huge strides in making roads safer and greener with a wide range of projects. By promoting walking and facilitating cycling and electric vehicles, the borough is facilitating a modal shift towards sustainable transport.*

*The borough was also awarded 'Most Improved Borough 2025' by the Healthy Streets Scorecard.*

## INCREASING EQUITY THROUGH SAFER ROADS

By expanding **Healthy School Streets** from 38 to **50 schools** and introducing 20mph zones borough-wide, we're making our **streets safer and cleaner**, giving every child the freedom to **walk and cycle** with confidence. These changes put people first, ensuring everyone can enjoy a healthier community.

## REDUCING EMISSIONS WITH EV CHARGING

Expanding our Low Traffic Neighbourhoods and **increasing EV charge points from 140 to 1,260** are essential steps that significantly cut emissions by limiting through-traffic and encouraging the shift to cleaner transport. Other initiatives that will save carbon include starting a Newham car club and investing in modal shift by improving cycling infrastructure.

## FUTURE READINESS THROUGH CLEANER TRAVEL

By expanding **EV charging** infrastructure and fostering safer, cleaner school streets, we are equipping our community for a sustainable, low-carbon future where active travel and environmental health are prioritised.



## WE'VE ALSO BEEN WORKING ON...

- Transitioning council fleet to **electric vehicles**
- Launching a sustainable transport strategy
- Running weekend **walking and cycling programmes**
- Delivering **safer walking and cycling** on Royal Docks Corridor, Romford Road, Leyton Road, Westfield Avenue and Woolwich Manor Way
- **Distributed grants for cargo bikes for businesses** as part of the Zero Emission Network (ZEN) project

# PRIORITISING SAFETY FOR OUR STREETS





# WE INCREASE SHARING AND REDUCE WASTE, BUILDING A SHARING AND CIRCULAR ECONOMY



*Realising the potential of underutilised spaces across the borough can create huge social benefits, and using the resources that we have around us is the essence of circular thinking.*

*This is why our collaboration with ReSpace and Newham's Community Wealth Building department is so exciting. Circular construction methods and local labour have made the Tate Institute restoration a source of pride for the local Royal Docks community.*

## INCREASING EQUITY BY RESTORING A CHERISHED COMMUNITY SPACE

Transforming a derelict heritage building into a community hub **involves residents** in its design and management and **creates local jobs**. The venue will also be used for **green skills workshops, recycling, and cultural activities** - fostering inclusion and shared connection.

## REDUCING EMISSIONS WITH RENEWABLE ENERGY AND REUSE

The project **uses 5 tonnes of reclaimed materials**, preventing about 10 tonnes of CO<sub>2</sub>. A deep retrofit will also **save roughly 87,000 kWh** each year by reducing the heat demand.

## BUILDING FUTURE READINESS WITH GREEN SKILLS

Local residents have been involved in the renovation of Tate Institute to re-establish the building as a thriving community hub.

The long-term ambition is for the space to become an **incubator for the local green economy**, with regular workshops to train people in circular practices.



## WE'VE ALSO BEEN WORKING ON...

- Reducing construction waste by **developing a circular materials hub in Silvertown**
- Increasing recycling rates, generating heat and power and producing fertiliser with **borough-wide food waste collection**.
- Supporting East London Waste Authority in their procurement of **waste management contracts** designed to incentivise reuse and recycling
- Unlocking funding for vacant buildings to be retrofitted and returned to community use
- Organising **clothing swap** and **repair café** events to encourage sustainable fashion choices

## RENEWING SILVERTOWN'S ICONIC TATE INSTITUTE





# WE EAT WELL AND SUSTAINABLY



*Newham's Public Health team have been working on delivering working farms on underutilised school land, with backing from some of the UK's top chefs.*

*"The joy I get from me and my team connecting with a small plot growing vegetables for us to eat is worth the price. They transport you from a concrete, urban environment with noise and stress into another little world for a moment."*

**- Isaac McHale (Chef Patron of The Clove Club)**

## SETTING UP INNOVATIVE URBAN FARMS AT SCHOOLS

### INCREASING EQUITY BY CREATING JOBS AND LEARNING OPPORTUNITIES

It's not just about growing vegetables, it's about **teaching our children** about where food comes from. The school market gardens demonstrate the importance of **sustainable local food growing** and how it can create green jobs in the future.

### REDUCING EMISSIONS THROUGH REGENERATIVE FARMING PRACTICES

The market gardens prioritise a host of sustainable practices. They manage food waste on site by **converting it into valuable compost**, and will store significant amounts of carbon in soils. They will also replace less sustainable sources of food, and support the shift to a **planetary health diet**.

### BUILDING A LOCAL FOOD SYSTEM FOR FUTURE READINESS

Converting underutilised school land into market gardens can make cities more **liveable and resilient** whilst also **increasing local capacity for food growing** and health-supporting activities. They also create jobs for professional growers.



Source: Honor Elliot

### WE'VE ALSO BEEN WORKING ON...

- A new solar powered home for **Newham Food Alliance Circular Economy Hub**
- Promoting and collaborating with Newham's **community gardens**
- Cooking classes through **Stay Warm in Newham**
- Piloting **cargo bike food redistribution** to cut down transport emissions
- Reducing the carbon footprint of school meals
- Working with leading **national food education partners** like [Veg Power](#) and [Nutrition Kitchen](#)





# OUR NEIGHBOURHOODS ARE RESILIENT, CONNECTED AND GREEN



*One of our flagship projects was a pocket forest planting programme alongside reforestation specialists SUGi, who use the Miyawaki method to plant dense urban forests.*

*“The SUGi pocket forest has generated a lot of interest in staff and volunteers who have taken part in planting, weeding and upkeep of the forest.*

*It has provided a sense of pride in the hospital and what it can do in respect of sustainability in Newham and the move towards Net Zero.”*

**- Adrian Gilson (Barts Health NHS)**

## INCREASING EQUITY THROUGH NATURE BASED SOLUTIONS

**8 schools, Newham hospital and Gooseley playing fields** now benefit from new forests planted by the local community. By planting trees and nurturing pocket forests together, we’re ensuring **cleaner air** for all, so everyone in Newham benefits from a healthier environment.

## REDUCING EMISSIONS AND IMPROVING AIR QUALITY

Tiny forests, BIG impact. **Over 18,500 trees** planted through SUGi will **absorb up to 500 tonnes of carbon over the next 30 years**. That means cleaner air at ten locations where vulnerable people learn, play and heal.

## REDUCING FLOOD AND HEAT RISK FOR FUTURE READINESS

As our pocket forests grow they will **help reduce the impacts of floods and heatwaves, boost biodiversity, and clean the air**. This natural protection helps our communities to breathe easier and live healthier. This supports our ambition for a greener Newham, built to last.



## WE’VE ALSO BEEN WORKING ON...

- **£343k** of community-led climate projects funded through People Powered Places
- A **Trees For Streets campaign** to facilitate resident-led street tree planting
- Newham’s **Green and Water Infrastructure Strategy** and Beckton Parks Masterplan
- **£1.2m** invested in school rainwater harvesting, flood reduction and food growing
- Launched **Air Aware website** to track our air quality

# CLEANER AIR THROUGH PEOPLE POWERED PLANTING

*“Reimagining our capacity to construct the local is foundational to navigating the transitions we face ahead.”*

*[Indy Johar, Dark Matter Labs]*

# ENABLING OUR NEXT STEPS



# HOW WE'RE USING ENABLERS TO SHAPE OUR FUTURES

Delivery actions need to be guided and unlocked by key enablers that help steer the system in the right direction.

These enablers shape how we can work alongside our public, private, and community groups, targeting the changes that are most important for a just and sustainable future. By focusing on these levers of change, we can ensure that the actions we take are coordinated, effective, and create opportunities that benefit everyone in Newham while strengthening the resilience of our local systems.

## 5 ENABLERS



Growing the  
Council's Climate  
Action capacity and  
effectiveness



Targeting and  
increasing  
investment



Partnering with  
Newham's  
Anchor Institutions



Enabling civic and  
place-based action



Working beyond  
Newham's borders



# GROWING THE COUNCIL'S CLIMATE ACTION CAPACITY AND EFFECTIVENESS



## INNOVATIVE FINANCE MODELS



---

Building on our community energy work, we are exploring how we can use Power Purchase Agreements and other levers to **mobilise private capital** and **accelerate retrofit**. We're also exploring innovative financial models in other areas, such as bankable climate adaptation solutions via a **4-year EU project**, where we've been selected as a pilot borough.

---



## MODERNISING DATA INFRASTRUCTURE



---

Our legal, finance and procurement systems are essential to protect our public spending, but also underpin the success of innovative projects and models. In order to deliver at pace, we will need to streamline governance processes and align these support systems. This will include the integration of our **Sustainable Procurement Policy**, which will aim to reduce the negative global impacts of our purchased goods and services, and the implementation of the new **Local Plan**. Additional Planning resources will also be required for the latter to be effective.

---



## GOVERNANCE FRAMEWORK



---

We have a huge need for reliable, centralised data across our energy, social housing and corporate buildings, and this requires modern data infrastructure. Improved **data handling systems** will support better decision making in key climate areas, and enable greater investment moving forward.

---



# TARGETING AND INCREASING INVESTMENT

Our current Warm Homes programme needs to grow from retrofitting 359 homes to reaching **17,000 social households** by 2050. To enable this colossal transformation, we are partnering with leading social enterprise Living Places to identify potential for retrofit and heat decarbonisation across North Woolwich, as part of our Net Zero Neighbourhood plans. We will also identify key target areas for future investment.

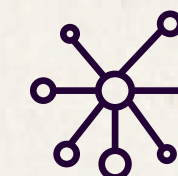
There enormous potential to develop an **affordable heat network** connecting the Beckton Waste Water Treatment plant with local data centres, capturing over 400 mW of waste heat. We are hoping to develop a **public-private ownership model** with the London Borough of Barking and Dagenham, maximising waste heat utilisation, sharing community benefits, and unlocking around £1 billion of investment to transform the local energy system and economy.

Having already tried and tested solar delivery with Repowering London and Community Energy Newham, the next phase of our work includes a 5-year plan to apply this model further by enabling **community-led retrofit, community-owned heat** and a **green skills' programme**. Not only will this help us tackle fuel poverty, but it will also upskill our young people and facilitate future green jobs in our borough.

ACCELERATING OUR  
RETROFIT PROGRAMME



AN AFFORDABLE EAST  
LONDON HEAT NETWORK



MAKING NEWHAM A  
REPOWERED COMMUNITY



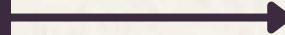




# PARTNERING WITH NEWHAM'S ANCHOR INSTITUTIONS



## PUBLIC-PRIVATE PLACE-BASED PARTNERSHIPS



One of our pressing needs is to break down silos between the council and local anchor institutions to collaborate on hyper-local community needs. Building on the **Royal Docks Climate Agreement** – the UK's first of its kind – which united over ten public and private sector organisations and secured a Zero Carbon Accelerator win to look at district energy solutions, we're now launching a business sustainability network in **Canning Town** this December.



## EDUCATIONAL INSTITUTIONS



As part of our Innovate UK programme, we have gained insight into where gaps exist regarding the **green skills** and **jobs** needed to accelerate our just transition. Our next steps will now include partnering with our educational institutions, including schools, colleges, universities and charities, to deliver more green skills' programmes and offer greater access to our residents. This will equip Newham residents to benefit from new sustainable and secure green jobs in the future.



## LOCAL POLICY & PILOTS



Working with the council's housing delivery partner Populo and research supported by Dark Matter Labs, we are looking at how we accelerate the delivery of high quality affordable and social housing that doesn't cost the earth. The research is demonstrating that the use of **modular timber and bio-based materials in construction** of new housing could speed up delivery by over 50% - meaning delivery of more jobs and more housing all brought forward at the necessary pace in line with our Newham Growth Plan. Policy changes at a London level will unlock this and pilot funding to prove it in London context.



# ENABLING CIVIC AND PLACE-BASED ACTION

---

To enable a just transition, we need to activate civic engagement at a hyper-local level. We focused on North Woolwich, an area undergoing regeneration, and convened a **Heat and Energy Forum** to reimagine a reliable, affordable and green area with key recommendations for the Council. We must now embed these insights into the **North Woolwich Strategic Framework**, continue community involvement, and collaborate with partners to mobilise solutions that transform local energy futures.

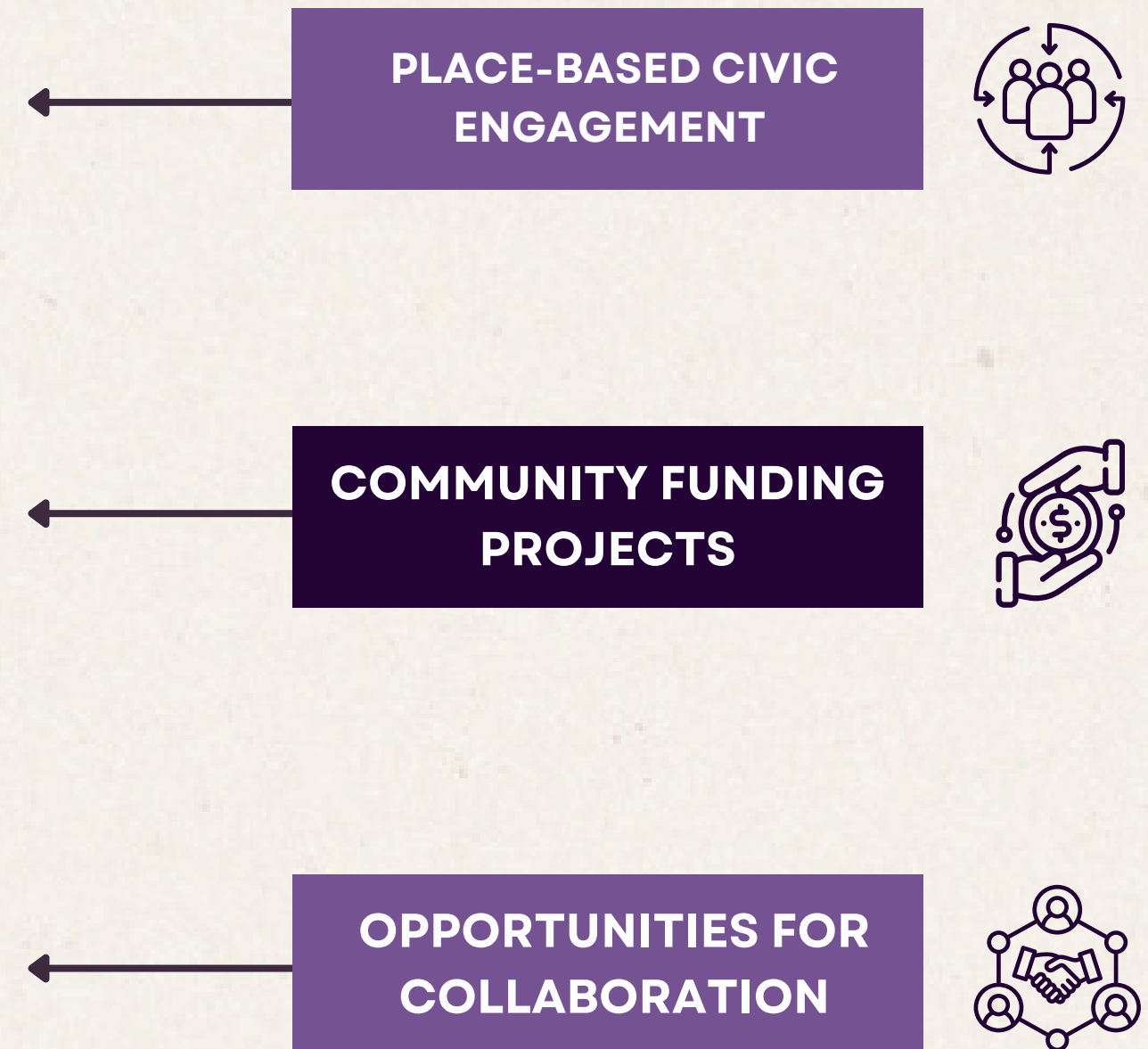
---

Supporting our council-wide initiative to fund community projects across our borough neighbourhoods through our **People Powered Places** scheme to ensure projects are supported by Council-led service experts, but led by community groups. Next steps include enabling greater investment in community-led climate initiatives by opening up our **Carbon Offset Fund** to applications from the voluntary, community and faith sector.

---

To build into our **existing community infrastructure**, we continue to collaborate with our local assets, including community libraries, youth zones, schools, councils for voluntary services and community organising groups. We will amplify their existing engagement work while embedding climate-related projects for residents, including reusable textile workshops, community-led roundtables and just transition workshops.

---

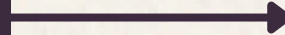




# WORKING BEYOND NEWHAM'S BORDERS



## ADVOCATING FOR LONG-TERM NATIONAL FUNDING



---

After successfully securing long-term national funding for initiatives such as our **Warm Homes** and **PSDS** projects, we recognise the barriers that rigid spend profiles present to project delivery. We are asking government to consider how **supply chain** bottlenecks, public sector **procurement** timelines and **Building Safety** protocols can delay delivery, and to provide flexible funding that reflects this.

---



## LONDON-WIDE JUST TRANSITION COALITION



Building on our award-winning leadership in shifting away from a narrow, carbon-centric approach to local climate action, we are now collaborating with partners including **London Councils** and the **GLA** to co-create a **London-wide standard** for a just transition. This involves openly sharing practices and outcomes to inspire and mobilise a city-wide approach.



## JUST TRANSITION POLICY DEVELOPMENT



---

We are moving beyond our local parameters to shape **London's planning policy** by contributing to the next London Plan, participating in climate initiatives led by London Councils and the GLA, and engaging with **national policy frameworks** beyond the capital via several EU-ran funding bids.

---



# OUR JOURNEY TOWARDS A BETTER FUTURE

Every retrofit, tree planted, and conversation with our community brings us closer to a borough that's fairer, greener, and ready for the future and more importantly, could save lives.

But lasting change doesn't happen alone – it happens when we work together. Together, we can create a borough and a city that not only adapts to change but leads it with the necessary pace and care.



**CONNECT WITH US AND GET INVOLVED**

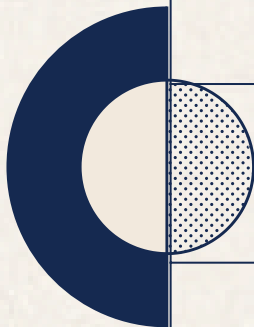
[climate.action@newham.gov.uk](mailto:climate.action@newham.gov.uk)

**SIGN UP TO OUR NEWSLETTER**



# Resource Page

Our local & regional strategy  
influences across the Just Transition  
stream of work →



Local	<a href="#">Just Transition Plan</a>
	<a href="#">Green and Water Infrastructure Strategy</a>
	<a href="#">Sustainable Transport Strategy</a>
	<a href="#">Newham Growth Plan</a>
	<a href="#">Newham Productivity Plan</a>
	<a href="#">Our Newham Local Plan</a>
	<a href="#">Local Flood Risk Management Strategy</a>
	<a href="#">Air Quality Action Plan</a>
	<a href="#">Royal Docks Social Infrastructure &amp; Climate Change</a>
Regional	<a href="#">London Climate Resilience Review</a>
	<a href="#">London Growth Plan</a>



With Thanks to Our Partners:

