

# Lady Helen Seymour House

Feb 2026

# Lady Helen Seymour House – A Timeline of the Building's History



**Lady Helen Seymour House has a long-standing presence within the community for providing care and support.**

The building dates back to **1911 – 1925** and was part of a cluster of buildings originating from 1888, which formed part of St Mary's Hospital, Plaistow.

- **1911 – 1925** - was first used as a nurses home.
- **1905** – St Mary's Hospital for Women and Sick Children.
- **1948** – the hospital joined the National Health Service.
- **1974** – joined the Newham District Health Board.
- **1985** – closed down, and services were moved to Newham General Hospital.
- **1988** – According to Planning records the site has been used for short stay accommodation since 1988.

**A site of care and community significance.**

# Lady Helen Frances Seymour



Lady Helen Frances Seymour nee Grosvenor was born on 5 February 1888. She died on 21 October 1970 at the age 82.

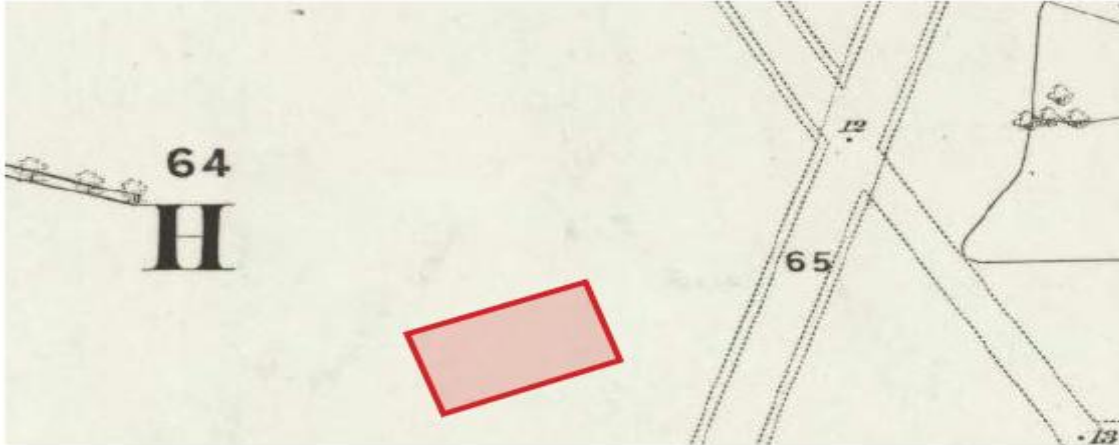
She was the daughter of Hugh Lupus Grosvenor, 1st Duke of Westminster and Hon. Katherine Caroline Cavendish.

Hugh developed the Grosvenor Estate which comprises of properties in London's Belgravia and Mayfair, as well as Eaton Hall in Cheshire.

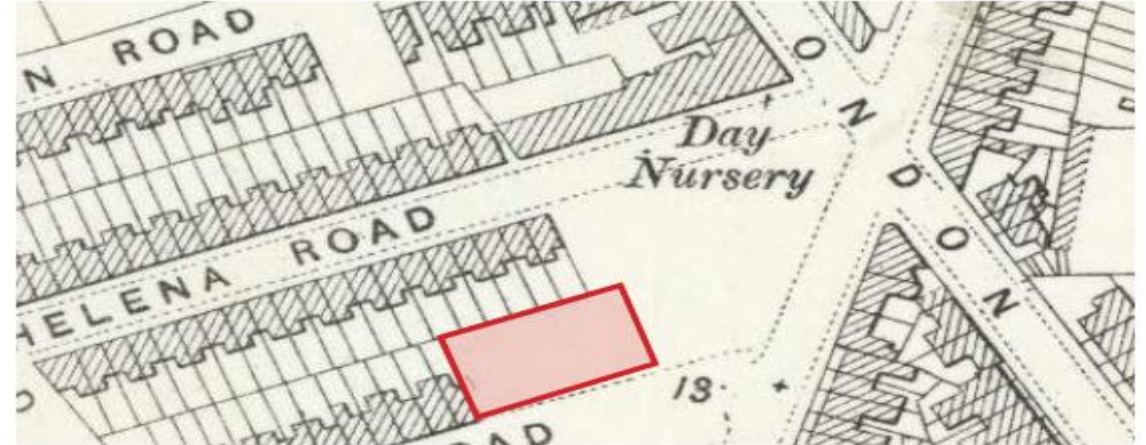
Lady Helen is the great-great-great aunt to Hugh Richard Louis Grosvenor, 7<sup>th</sup> Duke of Westminster. Godson to King Charles III and god father to Prince George of Wales and Prince Archie of Sussex.

In 1948 Lady Helen re-laid the original foundation stone that her mother had laid in 1892.

# Lady Helen Seymour House - Historic Site Plans



1863 OS Map showing marshland before development in the area



1893 OS Map showing the development of surrounding terraces



1914 OS Map showing the former St Mary's Hospital for Women and Children to the east of the site



1939 OS Map showing the Nurses Home which is the current building on site

# Lady Helen Seymour House - 1952 Aerial Image



*1952 historic aerial photograph of the Nurses Home next to the no longer present St Mary's Hospital for Women and Children*

# Lady Helen Seymour House - Images



*Heritage key ring depicting St Mary's Hospital for Women and Children*



*St Mary's Hospital for Women & Children, Plaistow E.  
Viscountess Parker Ward*

*Historic photo of nurses and patients at St Mary's Hospital for Women and Children*

# Lady Helen Seymour House - Present



The Council has secured funding via the Government's Single Homeless Accommodation Programme (SHAP) funding and has appointed Buxton Building Contractors Ltd. to carry out the refurbishment works.

The building is being restored sympathetically to create 42 ensuite bedrooms, in keeping with its heritage; and in collaboration with people with lived experience who have either provided care in a similar service provision and who have gone through the rough sleeping pathway. To ensure the design supports their needs.

The windows will be replaced with UPVC sash windows to improve the buildings thermal properties.

# Lady Helen Seymour House - Front Entrance



*Existing entrance lobby is cramped and isolated from the rest of the building*

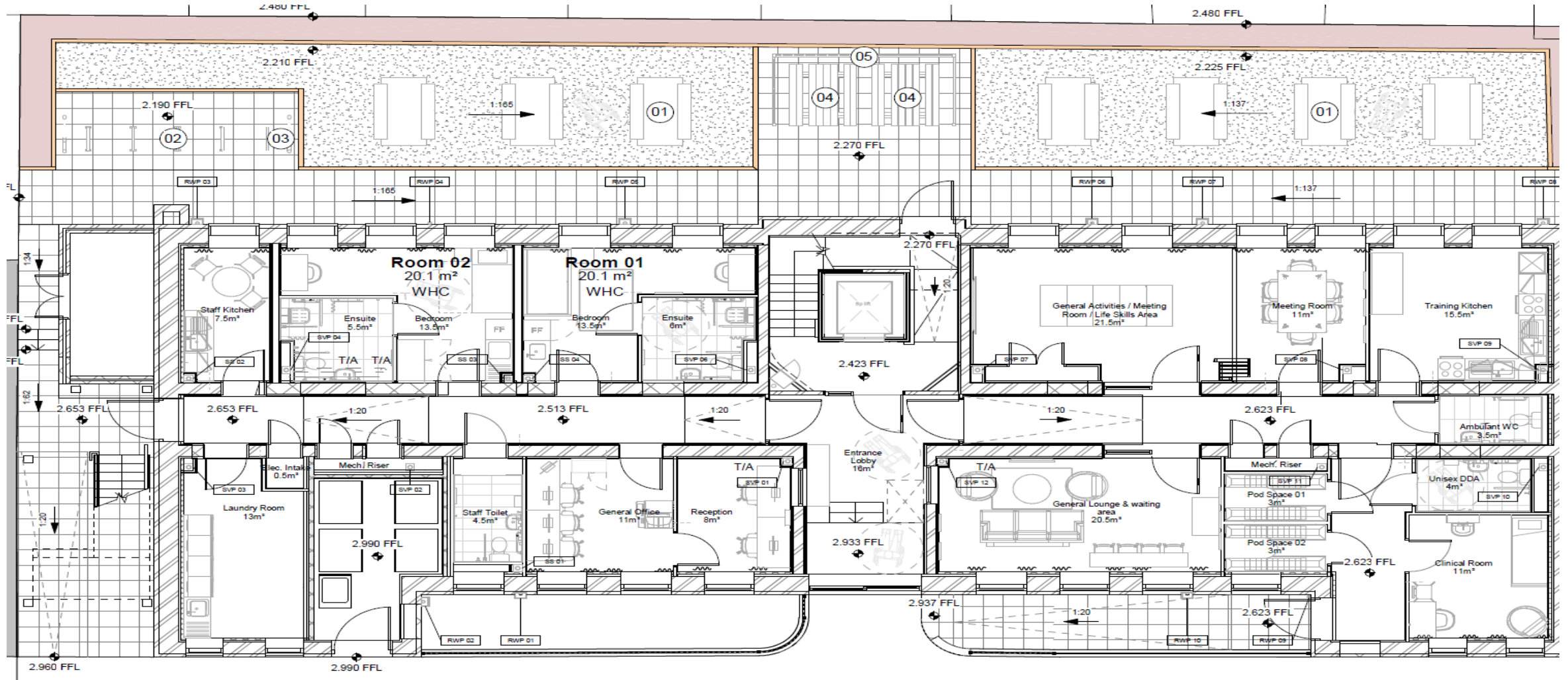


*Existing door treatment impedes visual connection between street and reception*

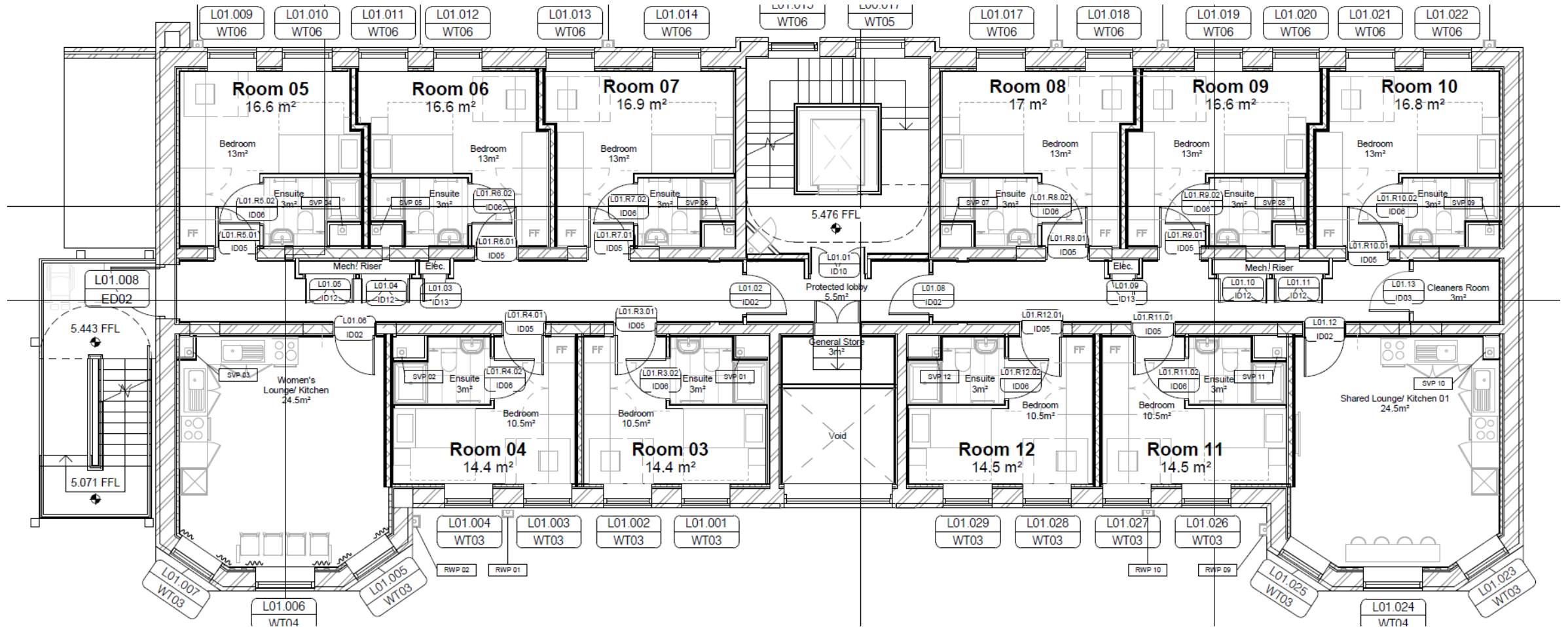


*Space above the main entrance seen with electrical services unit*

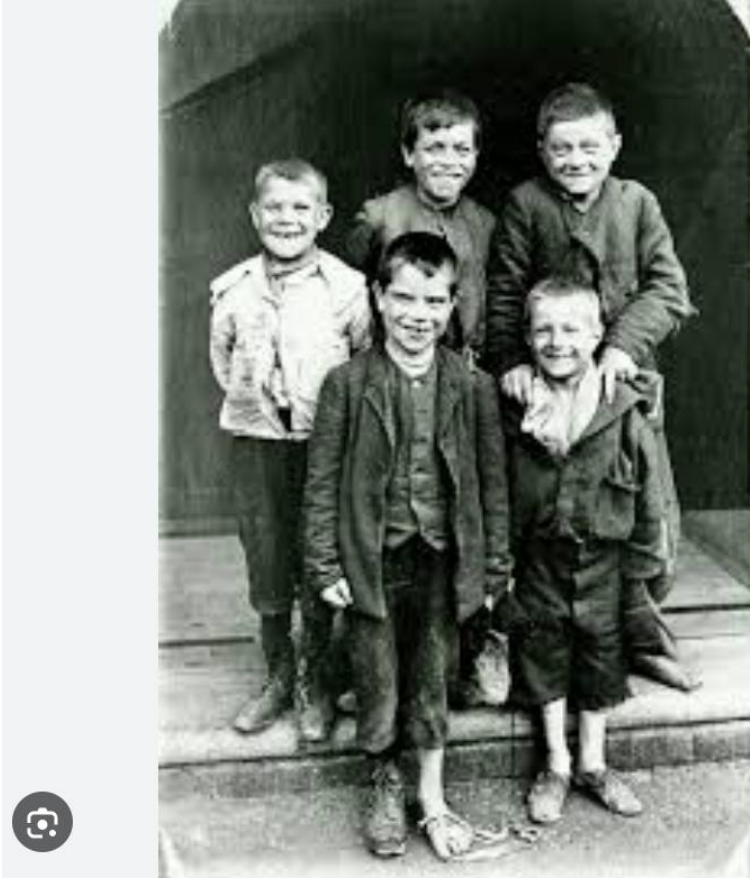
# Lady Helen Seymour House - Ground Floor Plans



# Lady Helen Seymour House - Upper Floors



# Lady Helen Seymour House - Future



A space offering safety, dignity and pathways to independence - continuing a legacy of supporting life transitions.

This continuity positions the project not as a break from history, but as a **modern extension of the building's original spirit of support and dignity.**

42 bed unit with 24-hour onsite staffing.

Assessment Centre & Step-down beds to **support healing, dignity, safety, and well-being, helping residents move towards independence**

1904, Something to Smile about ... a group of children from St Mary's Hospital, Plaistow .... Read more below