

Newham's Social Justice Approach

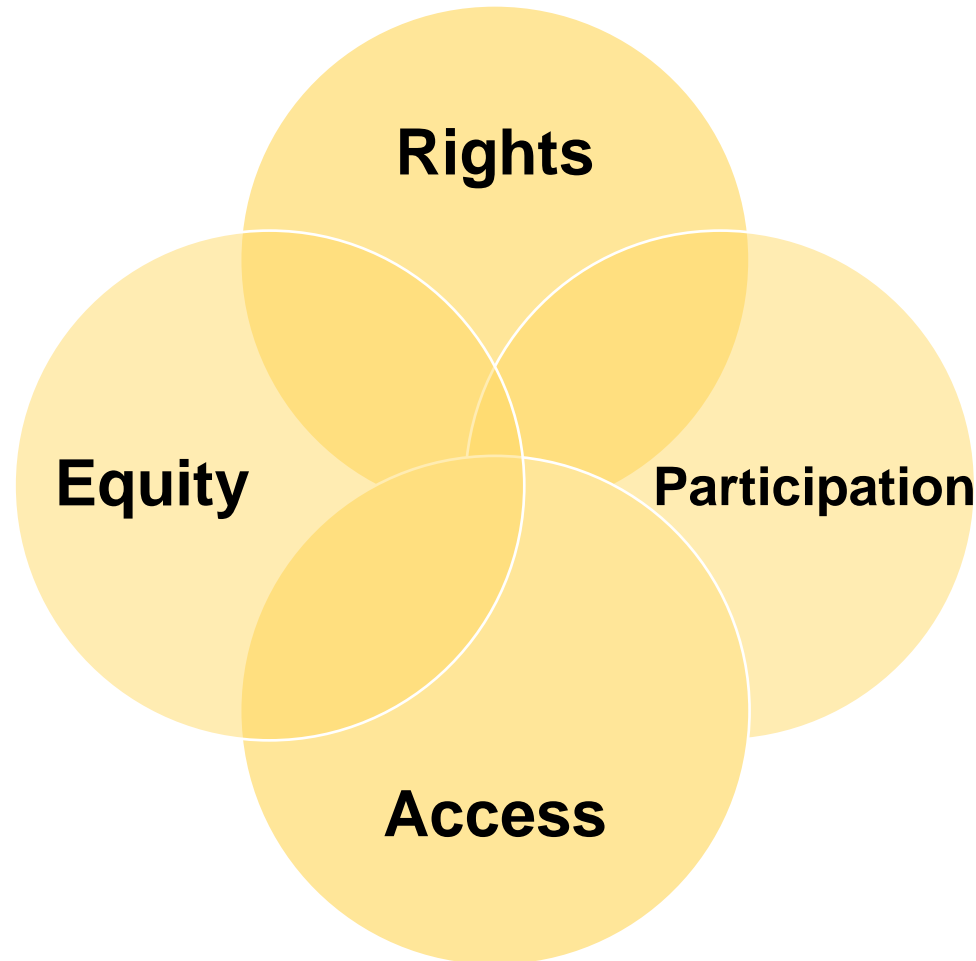
WE ARE NEWHAM.



SOCIAL JUSTICE & BUILDING A FAIRER NEWHAM



Championing child's rights,
being the best place for children



WE ARE NEWHAM.



[Pathfinder Project](#)

Newham Children Overrepresented Pathfinder Project

[Consent](#) [Details of child/young person](#) [Details of parent/carer](#) [Referrer details](#) [Safeguarding](#)

Please refer any young person of an African, Caribbean, South Asian, ROMA or any minority ethnic heritage, aged 6-25, with ACEs resulting from or amplified by the COVID-19 Pandemic

If you have any problems with this form, kindly contact the pathfinder team via email pathfinder@newham.gov.uk or call 07890057579

i The young person/family should be made aware that, consent to this referral includes consent for relevant information to be shared as appropriate with voluntary organisations working in partnership with the Pathfinder. It also includes consent for PNC checks to be conducted for the young person throughout the duration of the pathfinder project.

☐ Please confirm consent has been given to make this referral

[Cancel](#) [Next >](#)

[Tackling Racism, Inequality and Disproportionality \(TRID\)](#)

OUR PROGRAMME



WE ARE NEWHAM.

[Scrutiny Commission: Relationship Between Black Boys and the Borough](#)

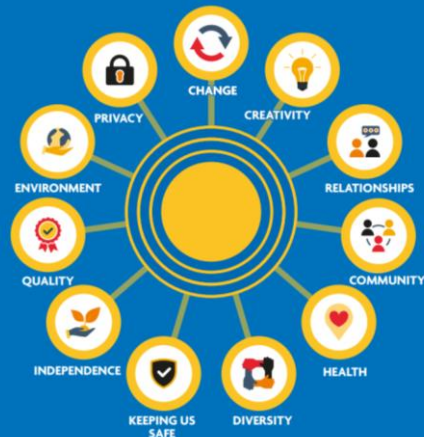
[Education 4 Change](#)

[ELFT Marmot Trust](#)

Ethnography

RIGHTS

Newham Young People's Charter



Child's Rights Culture

Legacy and Learning

Year of the Young Person



Young People's Hopes

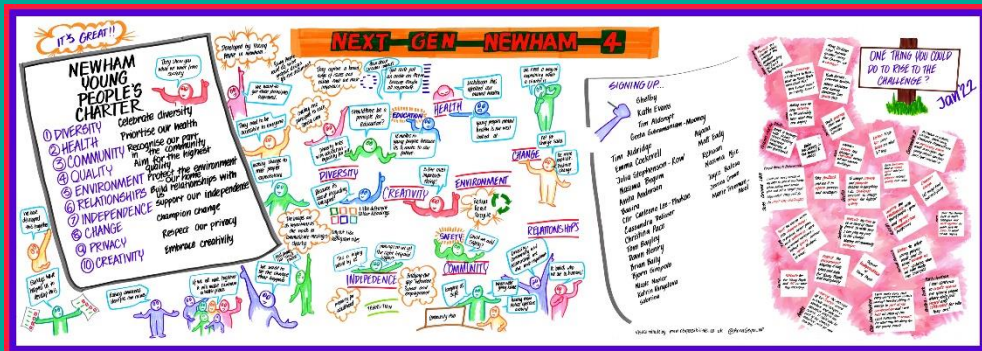
Thanks to Andy Lewis, Deputy Head at St Bonaventure's Catholic Secondary School in Forest Gate, who helped us mobilise the 'one-word' thoughts and feelings of 389 students in response to the question: 'Hope for my life means...', and in the word cloud above, this is what they told us!

Children and Young People's Plan



PARTICIPATION

Next Gen Newham



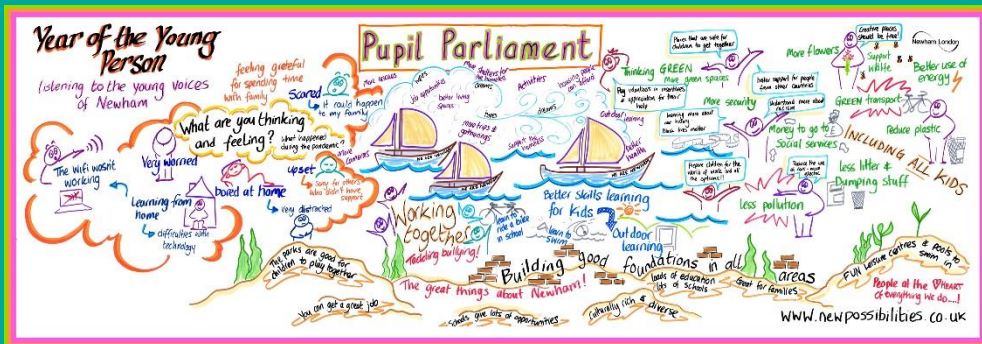
Year of the Young Person



Stratford Master Plan

Young Health Champions

Pupil Parliament



Youth Citizen Assemblies



Youngest in Charge (YIC)

Participation Alliance

WE ARE NEWHAM.

ACCESS

Journey of a Child



WE ARE NEWHAM.

Increase from four to eight Youth Zones



Youth Empowerment Fund



Headstart

Strengthened 0-25 offer including increased participation and take up of universal services

Increased Digital Reach

Pandemic Response

£2m Youth Services and Safety Commissioning

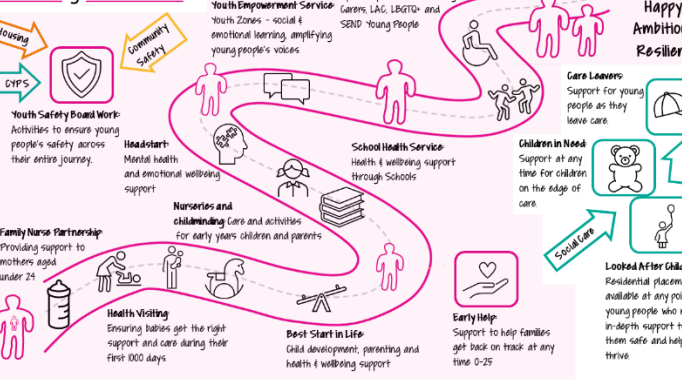
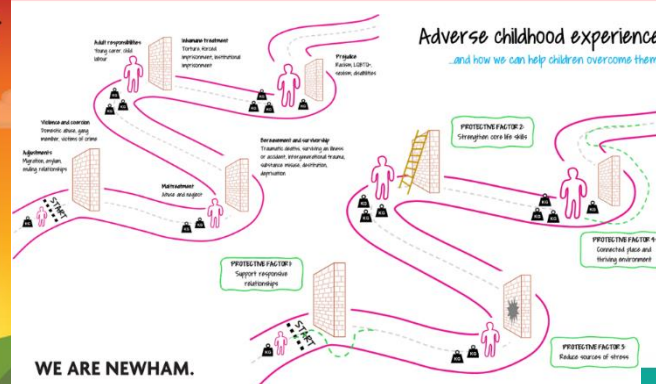
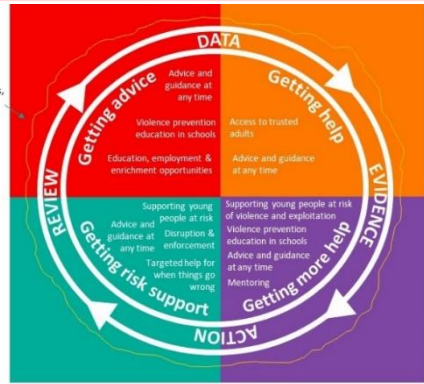
Children's Health Social Marketing Videos

0-19 Children's Health Service

DATA, EVIDENCE, INSIGHT, ACTION, REVIEW



The golden thread:
Creating solutions
together with partners,
the community and
young people



WORKING IN PARTNERSHIP



**Key partnership pieces
of work**



[Community Wealth Building](#)

Play Strategy

Early Help Strategy

[Community Safety Partnership](#)

[50 Steps to a Healthier Newham Strategy](#)

Growing Well Strategy

[Children and Young People's Plan](#)

[Marmot](#)

[Youth Safety Board](#)



WE ARE NEWHAM.



WHERE ARE WE GOING



Manifesto Commitments for Children and Young People

Embed a **child first and child rights approach**

Campaign for **food security** for all children and families on low incomes.

Ensure a continuing reversal of exclusion as part of strategy of **addressing systemic racism, inequality and disproportionality in education** participation and achievement of ethnic minority young people.

Strengthen **Prevention and Early Help Services** so that every family can access multi-agency support and provision within 15-minutes travel from where they live.

Invest £50,000 per year in the Council's **Youth Citizen's Assemblies** to be used for projects and initiatives co-produced with our young people.

Invest a further £50,000 per year in the **Youth Empowerment Fund**, which we launched in November 2020 with seed funding of £500,000 to support the ambitions of our young people.

Continue with a **public health approach to youth safety**, in collaboration with young people and the wider community by strengthening early intervention and preventive offer which includes advice and information.

Enhance our **children's health offer**, ensuring that all parts of the Council work with the Public Health team in health promotion and disease prevention for our children and young people, with a specific focus on oral health, childhood obesity and asthma.

Building on strong foundations already in place

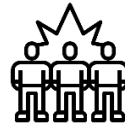
WE ARE NEWHAM.



BRIGHTER FUTURES 2021/22 OUTCOMES



93.9% of early education settings rated as **Good or Outstanding** by Ofsted. Up from 91.9% at end of 20/21



62,251 attendances to sessions run by the **Youth Empowerment Service (YES)** in 21/22



95% young people feel safe at their youth zone (Annual Youth Survey 2021/22)



93.4% of CYP engaged in early help intervention remained **below threshold for stepping up into statutory social care** (this rose from 90.1% in Q1 to 95.7% in Q4 21/22).

Increased take up of eligible 2 year olds early education funding offer



77% autumn term 2021. Up from 60% autumn term 2020.



93% young people using the Youth Empowerment Service gave their **satisfaction rating as good or above** (Annual Youth Survey 2021/22)

Timely **return home interviews** following a child or young person going missing:



58% completed in 3 working days in 21/22. Up from 54% in 20/21.

WE ARE NEWHAM.

Newham Children and Young People's Commissioner Key Achievements



Youth Safety Spotlight

Led partnership piece of work to develop and prototype innovative ideas to improve Youth Safety



Year of the Young Person

Year of projects and events celebrating and empowering Newham's Young People

Outcomes Framework

YP Embedded throughout the framework.

Young People's Charter

A charter developed by Newham's Young People setting what they expect and how they expect to be supported by the system in Newham.



Next Gen Newham

Young people, parents and senior leaders coming together to make decisions based on data, evidence and insight about where to apply a focus in order to make the biggest difference to young people lives.



GBV & Women's Safety Spotlight

Led partnership piece of work to develop and prototype innovative ideas to improve Youth Safety

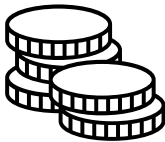


Award Nominations

1. Newham Multi-Agency Collaborative
2. Whole-School Asthma Approach



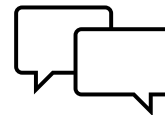
Youth Empowerment Fund



Financial support for Newham Young People to pursue their dreams and ambitions.

Expanding Youth Offer

Increased number of Youth Zones from 4 to 8. More opportunities for YP to access effective Youth Work.



Journey of a Child

Web resource for residents to be able to view and access all of their entitlement 0-25



Food Security Strategy

Developed partnership strategy to provide food security to all Newham residents.

WE ARE NEWHAM.

