

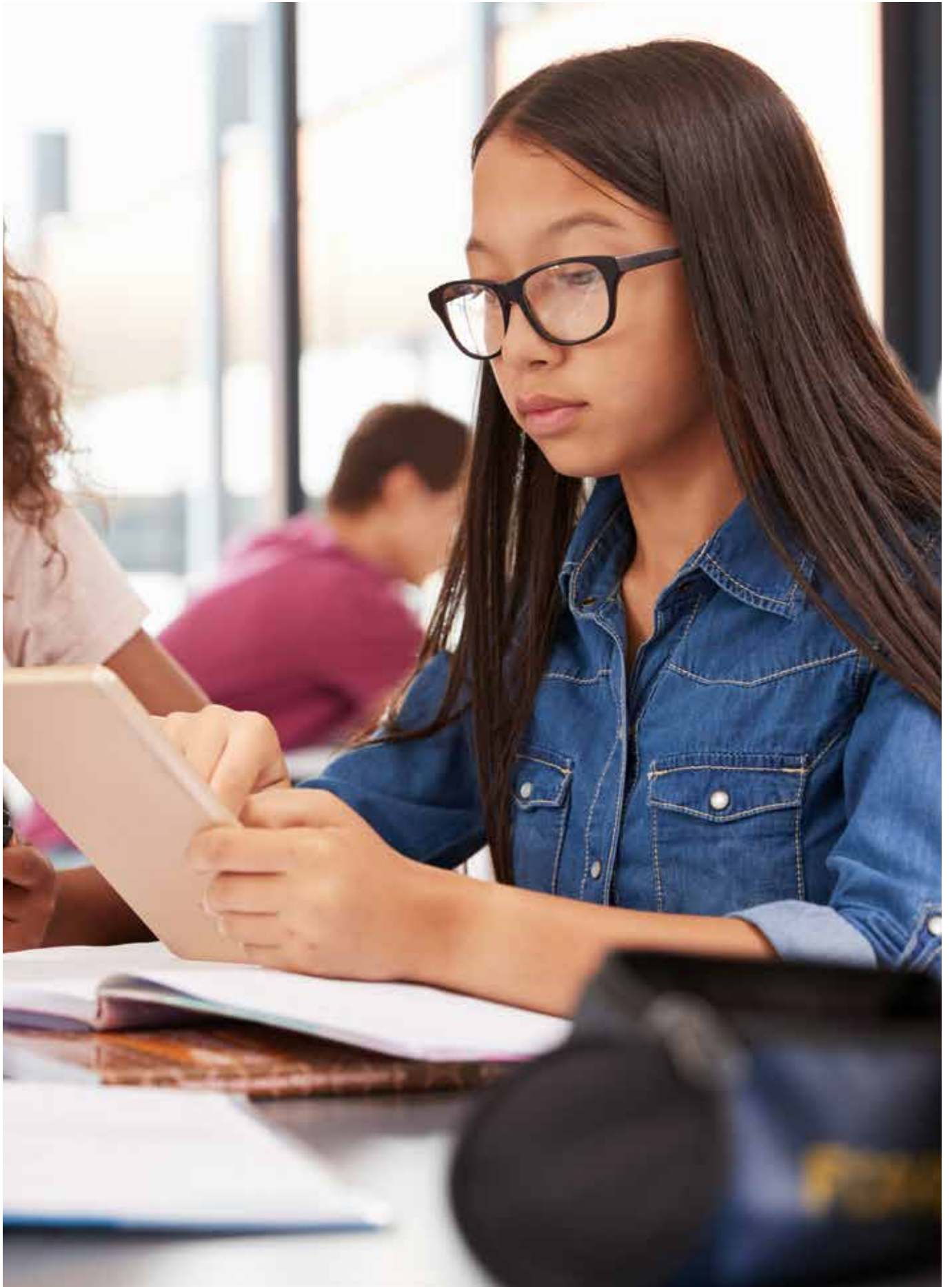
# A GUIDE TO 16-18 COURSES IN NEWHAM



## FOR STUDENTS IN YEAR 11 AND BELOW 2023 EDITION



**WE ARE NEWHAM.**



# CONTENTS

04

**Economic growth and job opportunities in Newham**

08

**Information for young people with special educational needs and disabilities**



16

**Financial Support and help**

05

**All routes ahead**  
How to get to the career you want

10

**What level is right for me?**

17

**Map of learning centres**

12

**Apprenticeships**

46

**Other pathways**



47

**Going to university**

19

## **Learning centres**

- Bobby Moore Academy (BMA) **18**
- Brampton Manor Academy Sixth Form **20**
- Building Crafts College **22**
- Harris Academy Chobham **24**
- Harris Science Academy East London Sixth Form **26**
- JFK Special School **28**
- London Academy of Excellence **30**
- London Design & Engineering University Technical College **32**
- Newham College of Further Education **34**
- Newham Collegiate Sixth Form Centre **36**
- Newham Sixth Form College (NewVic) **38**
- Six 21 **40**
- St. Angela's Sixth Form Centre **42**
- St. Bonaventure's 6th Form Centre **44**

50

**Where do I start?**

51

**Where to get advice and information**

# ECONOMIC GROWTH AND JOB OPPORTUNITIES IN NEWHAM

**Newham's accelerated regeneration is being driven by the borough's world-class transport and digital infrastructure, its young, energetic and increasingly skilled workforce as well as becoming home to organisations who are global leaders in their respective sector. The borough is well placed to take much of London's eastwards growth in the 21st century. By 2025 it is estimated that £22 billion will have been invested in the area, creating more than 35,000 new homes and 100,000 new jobs.**

One of the borough's most significant regeneration areas, the only Enterprise Zone in London, is **The Royal Docks**, a 125 hectare site, incorporating Silvertown Quays, Royal Albert Dock and Albert Island. Today, the area continues as an important economic centre for London, with industry giants such as **Tate & Lyle, ExCeL, London City Airport,** and the **University of East London. The Royal Docks** is now home to **City Hall**, the political seat of the Capital, the **Mayor of London**. The Royal Docks is also driving innovation across other key sectors including advanced urban services, business and leisure tourism, automotive, digital and tech industries, and cultural and creative production.

An ambitious £314 million investment programme will be delivered over the next five years and beyond, with greener sustainable development as a focus, re-emerging as a commercial hub of global significance.

Following on from the London 2012 Olympic and Paralympic Games, Stratford continues to see further



London Borough Of Newham, Apprentice Fair 2022

transformations, from the new ABBA Voyage Arena in Pudding Mill Lane, to the development of the International Quarter. **East Bank**, Stratford, will be a new powerhouse for innovation, creativity and learning, bringing world-class institutions to East London, including the **BBC, Sadler's Wells, UAL's London College of Fashion, UCL** and the **V&A**, along with an explosion of small businesses and start-ups. Stratford will be at the heart of UK's newest **Cultural Quarter, with East Bank fully open by 2025.**

Newham seeks to become London's destination for innovators and investors in the growing digital and data sector. **Newham Sparks** was launched in 2021, to catalyse and build on Newham's data sector which currently generates £23.1 million in gross added value. Capitalising on the opportunities in the digital and data sector could increase this to £104 million by 2035 and create more than 5,500 new jobs.

Over the next two decades, Newham will continue to act as a focal point for growth and investment within London. Together these developments are bringing new types of jobs and opportunities to the area in quantity and quality not seen here before, with a focus on securing long term growth and prosperity for future generations. In total, it is anticipated that 40,000 new jobs will be available by 2025, creating a cumulative economic value of more than £5 billion.

# ALL ROUTES AHEAD: HOW TO GET TO THE CAREER YOU WANT

Here is some advice to help you plan your next move after Year 11. Remember: whatever your first choice, make sure you have a back-up plan.

## **IF YOU ARE IN YEAR 11, YOU WILL NEED TO CONTINUE IN EDUCATION OR TRAINING UNTIL AT LEAST YOUR 18TH BIRTHDAY.**

Studying a course until you are 18 will give you the best chance of developing the skills and gaining the knowledge that employers and universities want.

There are different options for you to choose from at age 16. You can study A-level at a sixth form or at college; study an applied technical programme e.g. BTEC, take up an apprenticeship or traineeship, or study part-time and combine study with work or volunteering for more than 20 hours per week.

## **CAN I WORK FULL-TIME?**

You will still be able to work full-time (more than 20 hours a week) if you want to, or volunteer or even set up your own business. But you will also need to make time to undertake part-time training or study in order to meet the duty to participate – this will allow you to get accredited qualifications.

## **WHAT DO I NEED TO DO?**

Start thinking about the type of learning or training you need to get you where you want to be in the future. There are a range of choices available to you at age 16, such as A-levels, applied qualifications such as BTEC, or apprenticeships. You will have more choice about which route you would like to follow. This includes more traditional pathways

like GCSEs and A-levels, or applied and technical qualifications/training. Your teachers or the careers adviser at your school or college can help you decide what suits you best. Talk to your school careers coordinator to book a careers interview.

## **FULL-TIME EDUCATION**

Think about where you want to study. Do you want to study at a large sixth form college or further education college, a smaller school sixth form, or at a small training provider? You can find information about Newham learning centres in this brochure.

There are many different courses at a variety of levels. Your options will depend on your interests, strengths and Year 11 results. If you enjoy studying, do well at exams and are predicted to achieve mainly GCSEs at Grade 5 or above (formerly A\*-B) then AS/A-levels could be right for you.

If you are interested in learning about a general career area but are not yet ready to learn about a specific job, then an applied course could be for you. Applied qualifications are Level 3 courses for 16 to 19-year-olds that teach transferable skills. They are for students that want to continue their education through learning applied to a general job area e.g. business administration, health & social care, performing arts, arts, crafts, media & publishing.



If you are interested in training for a specific job role, there are technical qualifications available at all levels such as CILEX (legal work), AAT (accounts) and IMI (motor industry). Apprenticeships also include opportunities to study for technical qualifications. Applied courses are also available at level 2 for students who are not yet ready to progress to level 3 courses.

### **APPRENTICESHIPS**

If you are ready to start your career immediately, an apprenticeship will provide you with a job that offers training as well. You can apply through training providers and directly to employers.

You will need to be interviewed by an employer and possibly pass an assessment test. You will receive payment of a minimum of £5.28 per hour as well as having the opportunity to gain qualifications. If you need more qualifications or experience before starting an apprenticeship, then you might wish to consider a traineeship.

### **FREQUENTLY ASKED QUESTIONS (FAQS) I NEED HELP DECIDING WHAT I SHOULD DO. WHERE DO I EVEN START?**

The first thing you need to do is not worry. Careers advisers in your school have a broad knowledge of all the options. Based on your talents and individual needs, they will help you make the best decision. Most of the learning centres in this brochure have course advisers who will be happy to talk to you. Please contact the centre directly to find out more on specific courses and the grades required for entry.

For more information on specific careers and the qualifications and skills needed for them, visit the National Careers Service website.

### **I KNOW EXACTLY WHAT I WANT TO DO. HOW DO I APPLY?**

You need to check the application information and any deadlines on your chosen learning centre's website/s. Make sure that you complete the application fully and obtain references from your school. Your school will then advise you about submitting applications.

### **WHAT HAPPENS NEXT?**

If you meet the requirements for your chosen course and it is not oversubscribed, you will be offered a place. You may be asked to come in to discuss your application further. You will be able to ask questions and get advice to help you make the best choice for your future. If you are successful in your application, you will need to enrol formally in August or September. All offers of places are made subject to availability and are sometimes subject to you achieving your predicted grades. If you do not





achieve your predicted grades, get in touch with the college or learning centre as soon as possible to see if they will still accept you on the course or have another option available.

### LATE ENROLMENTS – IT MAY NOT BE TOO LATE.

The earlier you apply, the more options you will have. However, if you've missed the enrolment date, there may still be a chance to get a place on a course. Enrolments generally continue for two weeks after the start of the course, and this can be extended in some cases. Contact the learning centre to find out more.

### WHERE DO NEWHAM'S YOUNG PEOPLE GO?

**Catherine** completed A-levels in Biology (A), Chemistry (B) and History (A) after joining NewVic from St Angela's Ursuline School in Newham. She said: "My qualifications will definitely open a lot more doors for me and give me greater opportunities with my degree choice, which I researched more thoroughly during lock-down. I was offered a place at Middlesex University to study Veterinary Nursing".



**Bhoomi** achieved a Level 3 Extended Diploma in Sports (D\*D\*D\*) after joining NewVic from Stratford Academy. She said: "My teachers really pushed me to do extra work for me to go to the highest grade in all my units. I'll miss all the opportunities at NewVic. I took part in the Leadership Academy with the Sports Academy and achieved two coaching badges and met different people to gain new skills. I was offered a place at the University of Hertfordshire to study Sports Therapy".



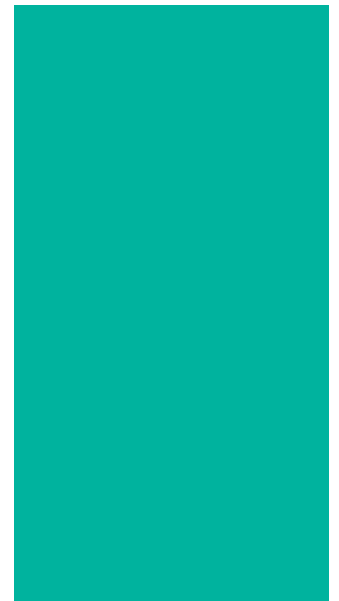
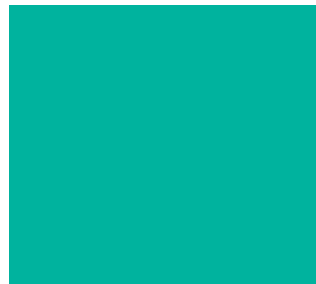
**Raky Ann** studied at Sarah Bonnell and currently doing a L3 Applied Science National Diploma. She is hoping to go to university to undertake a degree in science and pursue a career in scientific research.





# INFORMATION

for young people with special educational needs and disabilities (SEND), and for those helping them





# Leaving school to start the next stage of your life is very exciting, but it can also be an anxious time when careful decisions and choices have to be made that help you to fulfil your dreams and aspirations.

You will be thinking about the future and what you would really like to do. You will need to look into which courses or training are available and if you have a physical disability, a learning disability or perhaps both, you will also want to know about student support services that will enable you to get on with your learning.

## WHAT DO I DO NEXT?

- 1 Once you have found a course that is of interest, you can find out more by contacting the college, sixth form or other learning provider to arrange a visit. You will find contact details in this directory. Explain that you need to know about student support services and ask if you can meet the course tutor and someone from student support services.
- 2 When you visit, remember that this is your opportunity to find out about the course and for the course tutor to find out about you. The course tutor will know the course well and will offer you their best advice. It is important to listen carefully; you are making an important decision and it has to be the right one for you now and for your future plans.
- 3 When you speak to student support services or the course tutor, explain the support that you have had in the past and how this has helped you with your studies. Let them know if you have an Education, Health and Care plan (EHC plan).

## SOME GOOD ADVICE

- Advice and guidance is very important. There are people available to help you in school. It is really important to work with them.

- Listen to the course tutors that you will meet. If for some reason it is felt that the course is not the right one for you, do not be too disappointed. This happens to everyone at some time and it is very important that you start the right course.
- Whatever you choose to study, remember it does not matter if your learning takes small steps or larger ones. You are working towards what you would like to do in the future so remember that along the way we sometimes do change our mind about what that is.
- You are used to being at school for five days every week and you may now find that some courses or training are for only one, two or three days. Try not to let that worry you or those close to you. Your spare days are an opportunity to do something else that interests you which could be another course at the same place. Speak to the people who are helping you for advice and guidance.
- Lastly, enjoy yourself and your learning.

To find out about a wide range of services available for young people with Special Educational Needs and/or Disabilities, please visit [www.families.newham.gov.uk](http://www.families.newham.gov.uk)

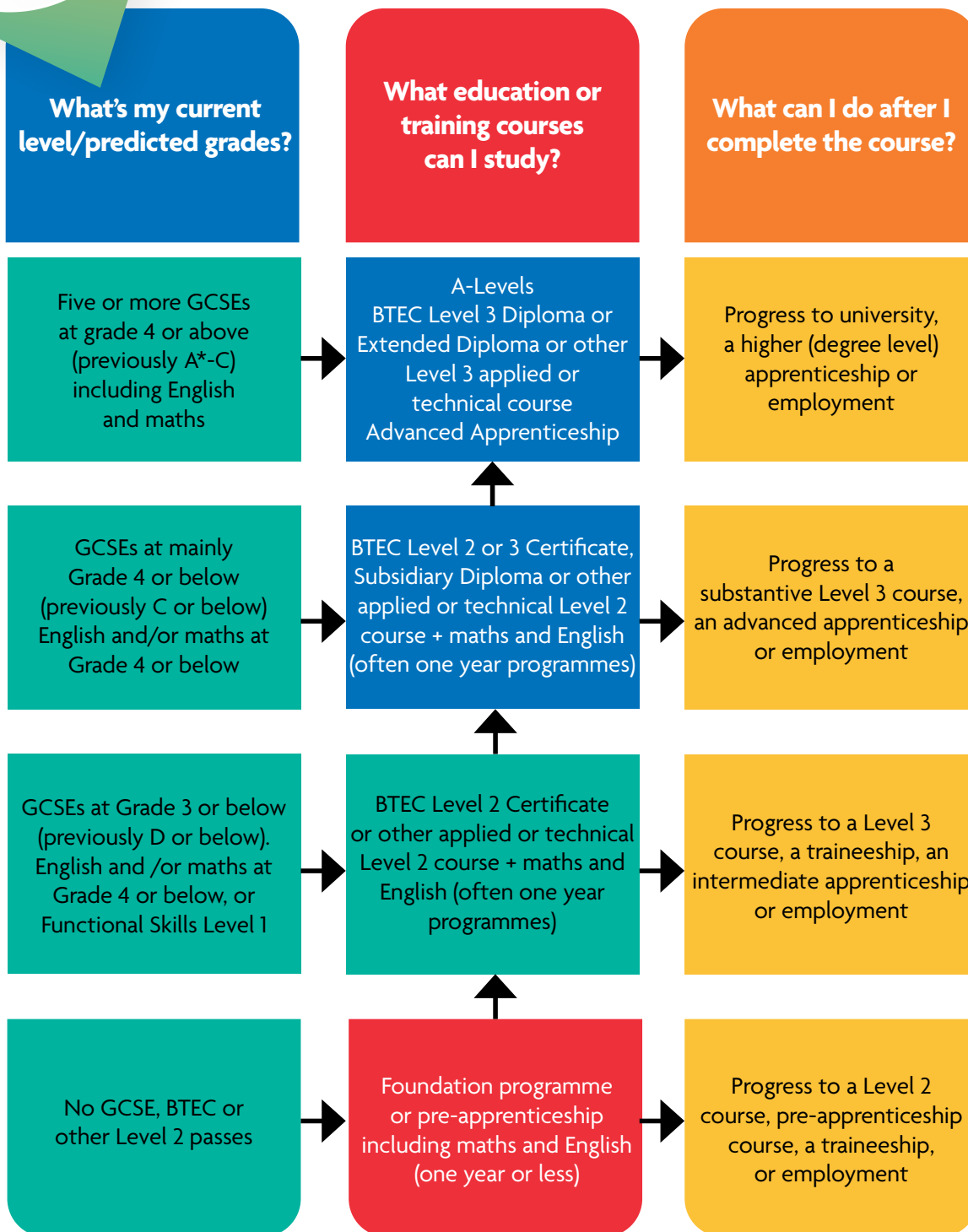


# WHAT LEVEL IS RIGHT FOR ME?



If you don't achieve a minimum of a Grade 4 at GCSE or a Level 2 pass in Functional Skills in maths and English by age 16, you will need to continue studying maths and/or English as part of your post-16 study programme.

# What level is right for me?



**There will be specific entry requirements for individual subjects and courses, and some subjects have higher entry requirements than others**

# APPRENTICESHIPS

There has never been a better time to start an apprenticeship.

Apprenticeship participation now stands at a record level - there were 349,200 apprenticeship starts in the 2021-2022 academic year of which 77,500 (22.2%) were under 19.

Apprenticeships give you the opportunity to work for a real employer alongside experienced staff. You will earn a wage and gain qualifications as well as valuable workplace experience and relevant job-specific skills. Apprentices are also given time for study related to their role (the equivalent of one day a week).

## WHY APPLY?

- Earn a real wage
- Be trained in the skills employers want
- Set yourself up for the future – apprentices enjoy marked salary increases when they complete their training, for example, 'A Higher level apprentice is likely to earn a minimum of £28,347 at the median on completion'\*

## WHAT TYPES OF APPRENTICESHIP ARE THERE?

All apprenticeships include elements of on the job and off the job training, leading to industry recognised standards or qualifications. Some apprenticeships also require an assessment at the end of the programme to assess the apprentice's ability and competence in their job role.

Apprenticeships are available at different levels:

- Intermediate apprenticeships - equivalent to GCSE (Level 2)
- Advanced Apprenticeships - equivalent to A-Level (Level 3)
- Higher Apprenticeships - equivalent to Foundation degree and above (Levels 4, 5, 6, 7)
- Degree - equivalent to a Bachelor's or Master's degree.

## HOW LONG IS THE APPRENTICESHIP TRAINING?

Apprenticeships take between one and four years to complete and cover more than 1,500 job roles in a wide range of industries, from engineering to financial advice, veterinary nursing to accountancy. The government is committed to increasing the

number of apprenticeships in the UK over the next few years, so there has never been a better time to get involved.

## HOW OLD DO YOU HAVE TO BE?

Anyone living in England aged 16 and over who is not in full-time education can apply to be an apprentice. If you feel you are not ready for an apprenticeship yet, you may want to try a traineeship.

## ENTRY REQUIREMENTS

Apprenticeships are available to anyone over the age of 16, living in England and have no upper age limit. The National Apprenticeship

### FARHEEN, PARTICIPATION & ENGAGEMENT FACILITATOR, NEWHAM COUNCIL

This apprenticeship has provided me with the perfect opportunity to learn, develop and progress, giving back to the community that I live in. The ability to secure a qualification which further supports my understanding of the role within this apprenticeship, has allowed me to personally progress with unlimited prospects and a bright future. My role as a participation and engagement facilitator allows me to put my current skills to practise and develop some skills such as confidence when having regular meetings with residents.



\*<https://www.incomesdataresearch.co.uk/resources/news/pay-for-qualified-degree-apprentices-competes-with-graduate-salaries> (IDR (Income Data Research Insights July 2021))

Service is committed to ensuring that high quality apprenticeships are a prestigious option, accessible to all people from all backgrounds. All vacancies on Find an apprenticeship will clearly state what the entry requirements are for the job role advertised.

There will be different entry requirements depending on the industry, job role and apprenticeship level.

If your predicted grades at GCSE don't meet the entry requirements for the apprenticeship you are interested in, you can apply for a traineeship. Recent changes to the minimum English and maths requirements now mean that people with a learning difficulty or disability can now access a Level 2 intermediate apprenticeship as long as they can achieve an entry Level 3 qualification during their apprenticeship.

A Disability Confident Employer will generally offer an interview to any applicant that declares they have a disability and meets the minimum criteria as defined by the employer. For more details, search Disability Confident on GOV.UK.

### HOW MUCH DO YOU GET PAID?

The minimum wage for apprentices is £5.28 per hour from April 2023, but many employers pay more than this. The London Councils Apprenticeship Pay Survey 2020 estimated the average mean hourly pay received by apprentices in Great Britain was between £9.02-£9.64 an hour for Level 2 and 3 apprentices. This is dependent on the sector, region and apprenticeship level. Your employment will normally be a minimum of 30 hours per week.

### TRAINING

During your time as an apprentice you will receive training to enable you to gain nationally recognised qualifications which will help advance you in your chosen career. Apprenticeships are designed with the help of employers, so they offer a structured programme that takes you through the skills you need to do a job well.

### WHAT'S ON OFFER?

Large, multi-national organisations to medium and small enterprises offer apprenticeships in a variety

### SAHL ASSISTANT ACCOUNTANT APPRENTICE

"A few years back I was working in the private sector as a pharmacy assistant and then became a pharmacy manager. Although I have gained valuable skills in managing a business to a certain extent I did not acquire management or finance qualifications. When I came across Newham Council's Association of Accounting Technicians (AAT) apprenticeship it appealed to me because it will help me achieve the AAT accounting qualification plus other transferable skillsets E.g. communication across a wide range of levels in which I did not obtain in my previous roles and using IT systems efficiently and effectively. I have completed a paper of the Association of Chartered Certified Accountants (ACCA) alongside the apprenticeship and aim to complete the full ACCA qualification. Although the apprenticeship requires self-discipline and motivation it is a rewarding choice as it is a stepping stone for further advancement. I would personally recommend as a good option."



- Retail and commercial enterprise
- Construction, planning and the built environment
- Engineering and manufacturing technologies
- Leisure, travel and tourism
- Art, media and publishing
- Business, administration and law
- Information and communication technology
- Health, public services and care
- Education and training.

There are more and more apprenticeships becoming available each year at different levels, and employers including BT, the BBC, Glaxo Smith-Kline, Lloyds Banking Group, Ministry of Defence Army, Newham Council, NHS Blood and Transplant (NHSBT), Royal Air Force, Royal Navy, Starbucks, Travis Perkins, and Transport for London, who all offer apprenticeship routes into their organisations.

A number of large organisations have replaced their



real Living Wage (rLW) of £11.95 per hour, and there are a range of apprenticeship vacancies available. Check the Newham Council website regularly to see when applications for apprenticeship vacancies are available [www.newham.gov.uk/apprenticeships](http://www.newham.gov.uk/apprenticeships)

### HOW TO APPLY?

At any one time on Find an apprenticeship, in a variety of careers and industries across England, there are between 12,000 - 20,000 apprenticeships vacancies online available at [gov.uk/apply-apprenticeship](http://gov.uk/apply-apprenticeship). You can search by keyword (job role, occupation type or apprenticeship level) and by location. In addition, some employers advertise vacancies on their website.

Once the right job comes up, simply register on the website and follow the step by step instructions to apply for the role.

You can talk to your school careers adviser about apprenticeships and they will support you in making apprenticeship applications.

### FURTHER SUPPORT

Additional financial support is available for care leavers starting apprenticeships. A £1,500 bursary is available to support care leavers who are aged 16-24. This will be paid directly to them in the first year of the apprenticeships. If you need help with your apprenticeship application or professional advice on making the right choices, visit [nationalcareersservice.direct.gov.uk](http://nationalcareersservice.direct.gov.uk) for a web-chat with an adviser or call 0800 100 900 (free from landlines and mobiles).

### OTHER BENEFITS

Did you know that apprentices are entitled to an NUS card? This is issued through the National Union of Students and gives you discounts at a number of retailers and services. You may also be entitled to apply for an Apprenticeship Oyster Travelcard, which allows you to claim up to 30% off adult travelcards and bus and tram season tickets.

### ISMAEEL, TRAINEE ACCOUNTANT, NEWHAM COUNCIL

"I saw the apprenticeship programme as a great alternative to university. It provided me with an option to train while learning and was an opportunity to professionally practice accountancy principles in a working environment which helped me to develop into an effective trainee accountant."



# FINANCIAL SUPPORT AND HELP

If you are under 19 and have been resident in the UK for three years or more, full-time 16-19 education fees are FREE (this is subject to eligibility and status)

For more information visit: [www.gov.uk/education/funding-for-16-to-19-year-olds-in-schools](http://www.gov.uk/education/funding-for-16-to-19-year-olds-in-schools) Fees will be charged for commercial or higher education courses, and international students have to pay fees on all courses.

While you may not have to pay tuition fees, you might have other expenses to consider such as exam fees and the cost of materials for your course.

## 16-19 BURSARY FUND

You could get a bursary to help with education-related costs if you are aged 16 to 19 and:

- studying at school or college (not university) in England
- on a training course, including unpaid apprenticeships.

Students most in need may be eligible to receive a bursary of £1,200 a year. This group includes young people who are:

- in care or have recently left local authority care
- receiving income support
- disabled and receive an Employment and Support Allowance (ESA), and either Disability Living Allowance (DLA) or a Personal Independence Payment (PIP) in their name.

## DISCRETIONARY BURSARY

Other students facing genuine financial difficulties may be awarded a bursary to help with the costs of travel, books or equipment. Bursaries may also be paid in kind.

Bursaries are paid on achievement of criteria such as attendance, punctuality and progress.

Education and training providers decide on a student's eligibility for bursaries; they also administer the bursaries and payments.

If you need financial support, speak to your student support service or tutor to find out more, or visit the 16-19 bursary fund website [www.gov.uk/1619-bursary-fund](http://www.gov.uk/1619-bursary-fund)

## CARE TO LEARN – HELP WITH CHILDCARE WHILE YOU LEARN

Care to Learn is available to young people under the age of 20 who have one or more children and participate in learning and training (not in employment), on a publicly funded course in England. If you live in London you may be awarded up to £195 per child per week to assist with childcare costs. For more information, please visit [www.gov.uk/care-to-learn](http://www.gov.uk/care-to-learn)

## OTHER AWARDS AND ALLOWANCES

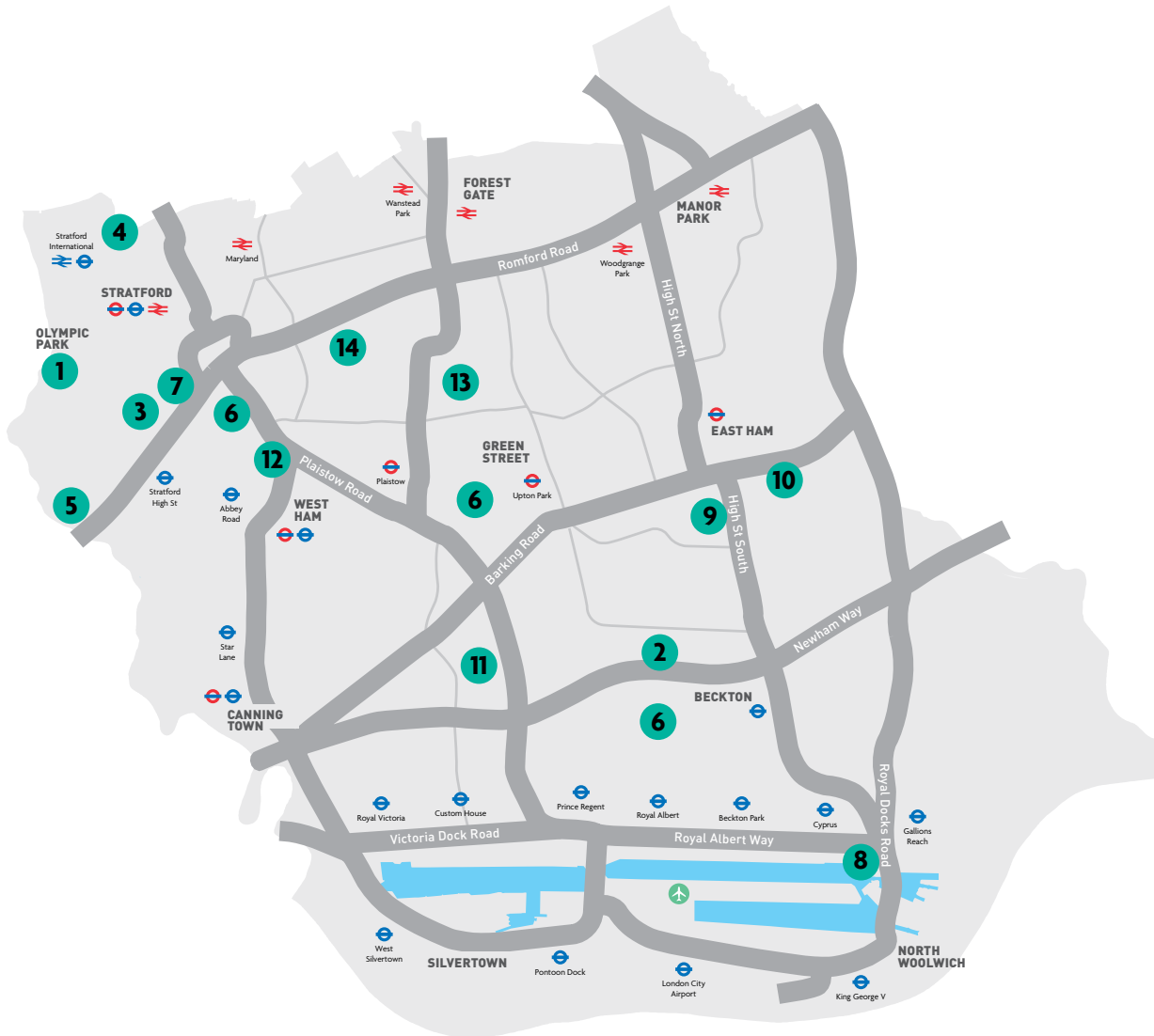
You could get a Dance and Drama Award (DaDA) to help with fees and living costs at one of 15 private dance and drama schools. Contact the school you want to go to and tell them you want to apply for a DaDA. You must be 16 or over and show talent and a likelihood to succeed in the industry.

If you are gifted and talented in specific subjects, such as sports, music and art, there are charitable organisations who you could apply to for funding. Information on such organisations is listed at public libraries, or you can speak to a careers adviser.

For more information, please visit <https://www.gov.uk/dance-drama-awards>



# MAP OF LEARNING CENTRES



## KEY

- |   |  |
|---|--|
| 1 Bobby Moore Academy Sixth Form                              | 9 Newham College of Further Education        |
| 2 Brampton Manor Academy Sixth Form                           | 10 Newham Collegiate Sixth Form Centre (NCS) |
| 3 Building Crafts College                                     | 11 Newham Sixth Form College (NewVIc)        |
| 4 Harris Academy Chobham                                      | 12 Six 21                                    |
| 5 Harris Science Academy East London Sixth Form               | 13 St. Angela's School Sixth Form Centre     |
| 6 JFK Special School  | 14 St. Bonaventure's School 6th Form Centre  |
| 7 London Academy of Excellence                                |  |
| 8 London Design & Engineering University<br>Technical College |  |

# BOBBY MOORE ACADEMY (BMA)

## SUBJECTS

Applied Science BTEC  
Art and Design  
Biology  
Business BTEC  
Chemistry  
Computing  
Economics  
English Literature  
Geography  
History  
Law  
Maths and Further Maths  
Physics  
Politics  
Psychology  
Religious Studies  
Spanish  
Sport BTEC (single and double)

**As part of the David Ross Education Trust, we are at the leading edge of education in the UK. As a student at Bobby Moore Academy opportunities are made available from the Trust that enable them to take part in once in a lifetime activities and learning experiences. Like our students, our staff are constantly looking to improve and hone their practice which they do by accessing the wealth of support of the whole Trust of schools and not just BMA.**

**By providing an excellent education for every step of a child's journey from age 4 through to 18, we will equip them with the knowledge and attributes to succeed throughout their time at school, and beyond it as well-rounded members of our community. Ultimately, our goal is that regardless of circumstances, every young person should be empowered through education to choose and succeed on their own path in life.**

**Mr Steve West, Executive Principal**

**Bobby Moore Academy (BMA) Sixth Form opens its doors to students in September 2023, promising to be East London's most dynamic centre for post-16, level 3 learning.**

BMA Sixth Form offers unique

academic, careers and pastoral provision. Our curriculum offer includes 19 different subjects and qualifications, all carefully considered to ensure that we offer quality in East London. This is in terms of:

- being the best for students' futures
- the qualification studied and the exam board which offers it
- the teaching staff whose professional qualifications and industry experience.
- the partnerships with universities, businesses, and charities, to enrich and extend the curriculum.

BMA Sixth Form has a purpose built, dedicated study centre, along with large panoramic roof terraces just for the sixth formers and a dedicated kitchen. Sixth form students are able to make use of cutting-edge facilities, including a theatre, dance and activity studios, recording studios and excellent sporting facilities, alongside The West Ham FC Stadium.

### Separate but Connected

BMA Sixth Form is distinct from the



Level 3 | A-level | BTEC



BMA Sixth Form seeks to build on the most outstanding feature of the academy: the provision for personal development. We provide you with a bespoke personal development package with the academic rigour and the opportunity to develop the skills and qualities needed to access the most elite universities worldwide and careers.

### **Partnerships, Careers and Futures**

Situated at the heart of Queen Elizabeth Olympic Park, BMA Sixth Form is privileged to have incredible partnerships with a wide range of institutions. Other partnerships include Cambridge and Oxford Universities, UCL and King's College London. In designing every aspect of BMA Sixth Form, we are guided by our values of ambition, aspiration, courage and respect.

The Elephant Group ([www.theelephantgroup.org](http://www.theelephantgroup.org)) programme at BMA Sixth Form supports you in developing the skills and qualities needed for university admissions at the most competitive universities. Guidance is led by experienced school UCAS advisors, and supported by a range of teachers, who are graduates of Oxford, Cambridge, Russell Group and USA Ivy League universities.

### **Enrichment and Extension**

BMA Sixth Form offers many enriching experiences from sport to the performing arts with national orchestras. Extension opportunities include the electives programme which consists of additional level 3 programmes to enrich curriculum offers. Courses include: the extended project qualification (EPQ), LAMDA, core maths and the certificate in financial studies.



### **Safe Hands**

Learning and studying post-16 is the biggest educational leap a person can make, so it is important to trust the experts to support you every step of the way.

### **FIND OUT MORE**

**BMA Sixth Form**  
**1 Sidings Street**  
**London E20 2AE**  
**T. 0203 146 8000**  
**E. [sixthform@bobbymooreacademy.co.uk](mailto:sixthform@bobbymooreacademy.co.uk)**  
**W. [www.bobbymooreacademy.co.uk/Sixth-Form/](http://www.bobbymooreacademy.co.uk/Sixth-Form/)**

# BRAMPTON MANOR ACADEMY

## SIXTH FORM

### SUBJECTS

Biology  
Chemistry  
Computer Science  
Economics  
English Literature  
Fine Art  
French  
Geography  
History  
Maths and Further Maths  
Physical Education  
Physics  
Politics  
Psychology  
Religious Studies  
Sociology  
Spanish

**“Brampton Manor Academy Sixth Form is one of the country’s leading A-level providers. We offer only academic A-levels and provide excellent teaching and guidance that enables the vast majority of our students to progress to the most prestigious Russell Group universities in the UK. If you’ve got a dream, we’ll help make it a reality.”**

Dr Dayo Olukoshi OBE,  
Executive Principal

Brampton Manor Academy Sixth Form offers distinctive, academic provision within Newham. We deliver a rich programme of A-level teaching in a wide range of subjects for students who aspire to achieve the high grades required for admission to the UK’s top universities.

Our amazing A-level results are an indication of the quality of our teachers, many of whom are Oxbridge and Russell Group graduates. Our teachers will leave no stone unturned in ensuring that you succeed.

We offer excellent resources with top quality accommodation in all curriculum areas, with the learning materials and equipment needed for outstanding teaching and learning. Furthermore, we provide a bespoke programme of extracurricular activities, ranging from yoga to

debating, to enrich your personal development. Many of our students attend summer schools with leading universities, including Oxford, Cambridge, Bristol and UCL. All students undertake work experience in a field of their choice in the summer.

Our sixth form is academically selective and students are taught in average class sizes of 20. Sixth form teaching takes place in our dedicated centre comprising of teaching rooms (including four science laboratories). Students also have access to a large study centre, common room and dedicated Sixth Form cafeteria

We offer you our track record as a school:

- > Our Russell Group progression rate, is consistently above 80% and this ranks us, in the top 10 in the whole of the United Kingdom year on year, with students going to great universities like Oxford, Cambridge, LSE, UCL, Imperial, Warwick, Bristol and Durham.
- > Our students achieved fantastic results at A-level with 90% of all grades awarded either an A\* or an A.
- > We are in the top 1% of schools in the country for student progress from KS4-KS5.
- > Over 50 of our students progress to Oxford and Cambridge Universities each year to study



Level 3 | A-level



highly competitive courses like medicine, law and economics - the highest of any local provider and amongst the best in the country.

We offer you academic success and the opportunity to develop the skills and qualities needed for university admissions, alongside first class UCAS guidance provided by our dedicated university access officers, who are graduates of Oxford and Cambridge universities. Alongside the high academic success you will achieve at Brampton, our most defining feature is the care and support we provide our students. We treat all students as individuals and do all we can to help you achieve success in whatever field you wish, enabling you to have an enjoyable and rewarding two years.

#### FIND OUT MORE

---

**Brampton Manor Academy**  
**Roman Road, East Ham,**  
**E6 3SQ**  
**T. 020 7540 0500**  
**E. [info@bramptonmanor.org](mailto:info@bramptonmanor.org)**  
**W. [www.bramptonmanor.org](http://www.bramptonmanor.org)**

# BUILDING CRAFTS COLLEGE

## SUBJECTS

Construction

The Building Crafts College delivers high quality training to learners in a wide range of construction occupations; from level 2 to level 4 and beyond. It is our mission to offer both craft and technical education in building crafts at the highest level possible to all our learners.

This high-quality training enables our learners to reach their full potential in their chosen field of learning. Our tutors are experienced, industry experts, who deliver training tailored to the needs of the learner, their experience, and the business needs of future employers. Training is delivered in our dedicated workshops and classrooms. Every student is placed under the

direction of a nominated course tutor, who is responsible for all aspects of that individual's training and welfare. Other members of staff will support the learner in meeting individual's needs. The college is essentially practically based. Most of the time is spent in the workshop environment, whilst much of the theory and underpinning knowledge is imparted in small groups around the work bench.

The college is fully committed to providing equality of opportunity and celebrating difference. Learners receive our support and commitment to achieve their full potential. We support all learners who require English and mathematics, whether that be at GCSE level or Functional



Level 3	Workplace based NVQ	College Diploma	Apprenticeship Standard
Level 2	Workplace based NVQ	College Diploma	Apprenticeship Standard



**BUILDING CRAFTS COLLEGE**  
*Crafting Excellence*

Skills. English and mathematics is supported and delivered alongside and embedded within the vocational areas of study.

Our learners gain good insight into working practices through site visits, work experience and many Apprenticeship opportunities whilst in attendance. Diploma Programmes of Study aim to provide routes into industry-based Apprenticeship employment.

We are immensely proud of our learners, many who have progressed to work for leading employers in the construction industry. Students can progress from 2 Diploma courses in Bench Joinery, Site Carpentry, Bricklaying and Stonemasonry on to Level 3 Diplomas in Bench Joinery, Stonemasonry or Fine woodwork. Diploma courses available to 16–18-year-old learners include: Bench Joinery Level 2, Bench Joinery Level 3, Site Carpentry Level 2, Stonemasonry Level 2, Stonemasonry Level 3, and Bricklaying Level 2. All include English and mathematics GCSEs or Functional Skills where required.



#### FIND OUT MORE

**Kennard Road, Stratford,  
E15 1AH**  
**T. 020 8522 1705**  
**E. [admissions@thebcc.ac.uk](mailto:admissions@thebcc.ac.uk)**  
**W. [www.thebcc.ac.uk](http://www.thebcc.ac.uk)**  
**I. @buildingcraftscollege**  
**T. @thebcc\_london**  
**FB. The Building Crafts College**

# HARRIS ACADEMY CHOBHAM

## SUBJECTS

Business, Economics  
and Computing

CTEC - Business Studies  
and Sport

English Literature  
and Modern Foreign  
Languages - Spanish  
and Mandarin

Film Studies

Humanities

Performing art

Religious Studies

Sports

Science and  
Mathematics

**“Our sixth form students have achieved amazing successes since we opened. We are all immensely proud of them.”**

**Fran Percy, Executive Principal**

Life in the sixth form is a very special time for students for many reasons. The core values of Harris Academy Chobham namely excellence, respect, integrity, innovation, collaboration, are mirrored within our sixth form.

We combine the traditional values of excellent behaviour and smart attire with great teaching, academic excellence and the best of modern technology. Sixth-form students at Harris Academy Chobham enjoy a dedicated ICT suite, study room and panoramic roof terrace as well as a sixth form cafe.

Our sixth form offers the opportunity to study on an A-level pathway or a technical pathway and the Football Academy was launched in 2018. Students are able to make use of cutting-edge facilities, including a theatre and box office, dance studio, Mac suite and recording studio and excellent sporting facilities.

In the nine years since opening, the 2022 results have been our most successful yet, achieving an ALPs3.

- Proportion of students studying an undergraduate degree at university - 84%.
- Proportion of students studying an undergraduate degree at a top 50 university - 46%.
- Many have secured places to study at the most prestigious





Level 3 | A-level | Technical (CTEC)

universities in the country, including The University of Cambridge, Imperial College London, UCL, LSE and King's College London.

Harris Academy Chobham is part of the Harris Federation, which in 2015 established a bursary for gifted but disadvantaged students who have gained places at Russell Group Universities. Harris Academy Chobham is included in the Harris Experience Advanced Years 12-13 Programme (HEA). HEA is a Russell Group application programme providing expert guidance and individually-tailored academic opportunities for our most able sixth formers.

In addition to these academic successes, our students have had access to a wide range of external speakers and careers advice. Students received visits from many outside organisations such as Pathways, UEL, Mark Evison Foundation, Unifrog, NCS, Holocaust Educational Trust, London Borough of Newham Workplace, UCL, Fix Up and Royal Holloway.

Harris Academy Chobham, a Healthy School (Bronze award, 2017) was in June 2015 judged by Ofsted to be an 'Outstanding' school and the sixth form was also judged as 'Outstanding'. Ofsted wrote that "[sixth form students]

benefit from an extensive range of highly effective teaching and learning opportunities. There are opportunities to complete high quality work placements and participate in a carefully planned personal development programme."

#### FIND OUT MORE

**Chobham Academy,**  
**40 Cheering Lane, E20 1BD**  
**T. 020 3747 6060**  
**E. [SixthFormAdmissions@chobhamacademy.org.uk](mailto:SixthFormAdmissions@chobhamacademy.org.uk)**  
**W. [www.chobhamacademy.org.uk](http://www.chobhamacademy.org.uk)**



#### What is it like to study here?

I really enjoyed my time at the Sixth Form. The facilities are great, and the teachers I had were extremely knowledgeable within their subject area, constantly helping me to challenge myself and aim for A\* grades. Alongside my academic studies, the support I received with my Oxbridge application and interview prep really benefited me in securing an offer at The University of Cambridge.

Haroon

# HARRIS SCIENCE ACADEMY EAST LONDON SIXTH FORM

## A-LEVEL SUBJECT LIST:

Biology  
Chemistry  
Computer Science  
Economics  
English Literature  
Further Mathematics  
History  
Mathematics  
Philosophy  
Physics



### **Developing leaders in their chosen field.**

This is no ordinary Sixth Form, and we are very proud of that. Situated in an eclectic array of buildings next to the renowned Three Mills Studios (location of BBC's Masterchef) amongst the iconic East London canal network, this is a unique setting to prepare ambitious young people to make a positive change in their community and beyond.

**We offer more than just a place to study A Levels.**

We are **deliberately small.**

This means we can provide you with personalised learning and bespoke guidance to help you fulfil your potential.

We offer a **rich, academic curriculum**, delivered by subject experts and supported by industry leading consultants from the Harris Federation.

Students will also experience a range of opportunities to develop a **global perspective**. This will ensure that they have the skills and leadership qualities to make a change in the world.

### **Elite Provision**

**We have extensive links with Oxbridge colleges, medical schools and Russell Group universities with a bespoke programme aimed at facilitating access to elite institutions. Be part of the 200 strong Harris Experience Advanced programme.**

In Year 12, Harris Experience Advanced students are given the opportunity to meet each other at least three times a year as a group, to share ideas and to take advantage of special programmes like the MeDCAS programme and the Oxbridge Programme.

They also receive clear and tailored advice about top level university entry

Level 3 | A-Level

and we teach students how to build up a competitive profile.

**The Harris Federation has a proven track record of delivering exceptional outcomes at A Level.**

70 Oxbridge offers were made to Harris Federation students in 2023. 20% of our students receive an offer to study Medicine, dentistry or veterinary science. 25% of our students are placed at RG Universities. The national average for RG is 12%.

**Our Curriculum Offer**

We offer a broad range of A Level subjects that will support you to gain access to university, elite careers or professional apprenticeships. In selecting these courses, you will be given extensive advice and guidance to ensure you are making the right choices for you and your future. Whilst we are a Science Academy, there are no subject restrictions in place, and we offer arts and humanities in addition to maths and science.

All students follow a taught curriculum of five hours per week. In addition, students are expected to attend independent study periods throughout the day. In order to be successful, learning goes beyond the taught curriculum and you will be expected to read widely around your subject.



In addition to the academic curriculum, we will provide you with a variety of opportunities to excel, through sports, arts, mentoring and leadership.

**Careers**

Year 12 is a year packed full of opportunities for personal growth and development. You are offered a 50-minute careers interview where you will develop an action plan to help you achieve your goals.

Other planned activities for Year 12 include:

- UCAS Exhibition at ExCel University and Apprenticeship Search Fair
- Volunteering to provide 1-2-1 tuition to lower school pupils
- Sixth Form Debating Society
- Careers drop in workshops and lunchtime seminars
- Saturday UCAS Personal Statement Writing Workshops.

Beyond 18 Week involves talks and

workshops from employers and apprenticeship providers. This is when you begin to write your initial personal statement for UCAS, have a mock Oxbridge style interview and begin the search for opportunities over the summer holiday.

**Dan MacPherson**  
**Harris Science Academy East London, Principal**

**FIND OUT MORE**

**Harris Science Academy East London Sixth Form, The Clock Mill, Three Mill Lane, London E3 3DU**  
**T. 020 8981 2680**  
**E. [sixthform@harrisscienceeastlondon.org.uk](mailto:sixthform@harrisscienceeastlondon.org.uk)**  
**W. [www.harrissixthform.org.uk/](http://www.harrissixthform.org.uk/)**

**How to find us:** Bromley-by-Bow tube station – 5 minute walk.

# JFK SPECIAL SCHOOL

## SUBJECTS

Functional skills  
Vocational skills  
World studies  
Independent living skills  
Sport and physical activity

Special Needs Academy



**“JFK Special School offers a personalised and meaningful continuation of high quality learning opportunities for young people with complex learning needs, preparing our students for their next steps in life”.**

Jim Robinson  
Headteacher

We offer a small allocation of post 16 places within our 4-19 school. Our post 16 provision is delivered at our Beckton, Plaistow and Stratford sites. The purpose of the curriculum is to develop communication, life skills and independence.

We offer structured teaching and learning approaches within our Autism Spectrum Condition (ASC) provision, supported by symbolic communication strategies - the

Picture Exchange Communication System (PECS). We offer a sensory based curriculum with all aspects of physical development and postural management in our provision at Stratford for more complex learners.





We offer ASDAN Personal Progress or supported Entry Level 1 qualifications and Personal and Social Development to Level 1. We can deliver accredited Life Skills Challenges in a wide range of subjects.

#### **FIND OUT MORE**

---

**JFK Beckton: Tollgate Road,  
London E16 3LQ**

**JFK Plaistow: Northern Road,  
London, E13 9JA**

**JFK Stratford: Pitchford Street,  
London E15 4RZ**

**T. 020 8534 8544**

**E. [info@jfk.lihtrust.uk](mailto:info@jfk.lihtrust.uk)**

**W. [www.jfkspecialschool.lihtrust.uk](http://www.jfkspecialschool.lihtrust.uk)**

#### **What is it like to study here?**

**“JFK is the best partner I have found for my son’s journey”  
Zenaide Tavares (parent)**



# LONDON ACADEMY OF EXCELLENCE-STRATFORD

## A-LEVEL SUBJECTS

- Biology
- Chemistry
- Economics
- English Literature
- French
- Geography
- History
- History of Art
- Italian
- Mathematics
- Further Mathematics
- Philosophy and Theology
- Physics
- Politics
- Psychology
- Spanish

**London Academy of Excellence Stratford (LAE Stratford) is an academically-focused and high-achieving sixth form in Stratford, East London. Located right next to the station and Queen Elizabeth Olympic Park, it has been rated Outstanding in all areas by Ofsted, and named as one of the World's Best Schools by T4 Education.**

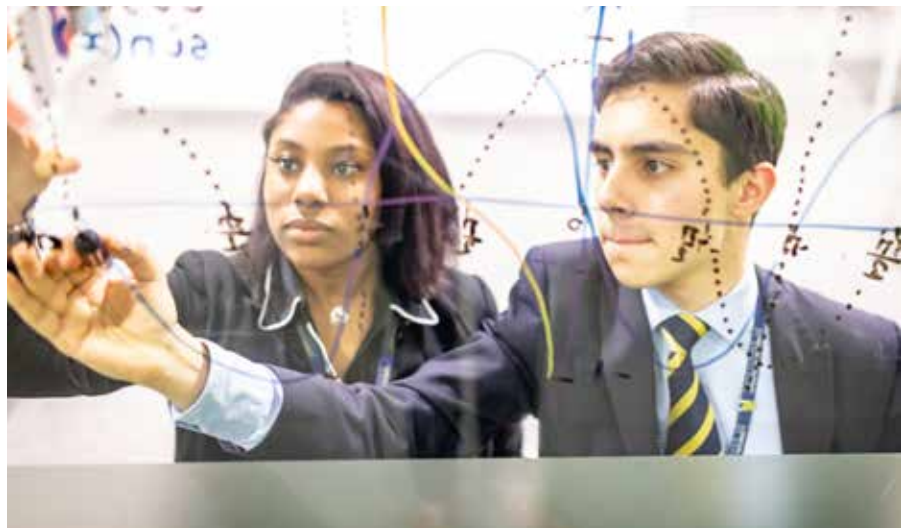
LAE Stratford is a great option for you if you love learning, are prepared to work hard, want to develop beyond the classroom, and aspire to study at a top university.

LAE has been among the top 10 A Level providers in England every year since 2019, according to the Sunday Times, with an average A-level grade of an A\*. We are proud



of our teachers, who were judged 'Outstanding' by Ofsted, and of our university progression success - on average, one in 10 of our Year 13s received an offer to study at Oxford or Cambridge in every year since 2017. In 2023, one in five LAE students received an offer to study at a British medical school.

We are a values-driven school, and provide a world-class education



Level 3 | A-level

and incredible opportunities to our students with the support of our partner schools, which include some of the top independent schools in the UK. You could find yourself taking part in weekly sporting options ranging from Zumba and sailing to football and yoga, visiting one of the top universities and listening to a lecture from a world-famous actor like Sir Ian McKellan. This is the “LAE Experience”, and you will be part of an inclusive community that promotes academic achievement, aspirational opportunities, enriching experiences and personal development.

### Academic Achievement

Rigorous curriculum.  
73% A\*- A (national 25%)  
97% A\*- B (national 51%)  
100% A\*- C (national 77%)

Average grade: A\*

### Aspirational Opportunities

University visits

Mentoring  
Work placements  
Career-readiness workshops  
**Enriching Experiences**  
Weekly sport  
Weekly clubs and societies  
Duke of Edinburgh Award  
Combined Cadet Force  
Performing arts hub

### Personal Development

Outreach  
Volunteering  
Partner school work  
Tutoring

### FIND OUT MORE

**London Academy of Excellence,  
Broadway House,  
322 High Street,  
Stratford, E15 1AJ**  
**T. 020 3301 1480**  
**E. admissions@lae.ac.uk**  
**W. www.lae.ac.uk**  
**🐦 @LAEstratford**  
**📷 @LAEstratford**



### What is it like to study here?

“The support we receive from our teachers is incredible. I only saw Oxford and Cambridge as an impossible dream, but since joining LAE the idea of applying to the top universities has been ‘normalised.’”  
**Reiss, who studied English Literature at the University of Cambridge after LAE Stratford.**



# LONDON DESIGN & ENGINEERING UNIVERSITY TECHNICAL COLLEGE (LDE UTC)

## SUBJECTS

Art and Design  
Biology  
Built Environment  
Business Studies  
Chemistry  
Computer Science  
Digital Media  
Economics  
Engineering  
Graphics  
International Air and  
Space Training Institute  
Mathematics  
Physics  
Psychology

**“An amazing thing is happening in East London. It’s going to change thousands of young lives and give Britain the dynamic and creative workforce it so desperately needs. It’s called LDE UTC and if you are 13+ and want to attend the tech school of the future, you need to know about it!”**

Jason Bradbury, TV tech expert

LDE UTC, based in the heart of the Royal Docks, East London is an industry led, hi-tech 13 – 19 college, providing educational excellence for the learners of today. LDE UTC has some of the most innovative and advanced teaching technology in the UK including a LEGO Innovation Studio, the most advanced humanoid robots and the latest industry standard technologies



enabling our learners to become confident, independent, work-ready individuals.

Young people choose to come to us because they have a passion to pursue a career in design, engineering and digital media. Much of the curriculum for our range of Level 3 courses is delivered through interesting and





Level 3 | A-level | BTEC | Advanced Apprenticeships

Cambridge Technicals | T Levels

exciting employer-led projects, enabling learning by doing. Learning content is relevant and memorable, boosting our learners' academic achievement.

Our young people receive expert advice from our employer partners and university sponsor, coupled with mentoring, site visits and work placements. Our employer partners include Thames Water, Costain, Skanska, Thames Tideway Tunnel, the University of East London and many more.

We also offer a unique pledge to all of our learners to help them move on to a degree course at university of their choice, an offer of employment or an apprenticeship with one of our many partners when they leave the UTC. If you are interested in a career in design, digital media and engineering then our practical and



academic approach, combined with the strength of our world class employer partners, then the LDE UTC is the place for you.

#### FIND OUT MORE

**London Design and Engineering UTC,  
15 University Way,  
E16 2RD**

**T. 020 3019 7333**

**E. [admin@ldeutc.co.uk](mailto:admin@ldeutc.co.uk)**

**W. [www.ldeutc.co.uk](http://www.ldeutc.co.uk)**

**f [www.facebook.com/ldeutc](http://www.facebook.com/ldeutc)**

**t [@ldeutc](https://twitter.com/ldeutc)**



# NEWHAM COLLEGE OF FURTHER EDUCATION

## SUBJECTS

Art and Design  
Accounting and Finance  
Apprenticeships  
Business Studies  
Catering and Hospitality  
Childcare  
Engineering, Electrical, Plumbing and Building Structures  
Digital Technology  
English and Maths  
Fashion and Tailoring  
GCSE Science pathway  
Hairdressing, Barbering & Beauty  
Health and Social Care  
Humanities and Science  
Rail, Aviation and Motor Vehicle Engineering  
SEND (Special Education Needs and Disabilities)  
Sports, Professional Fitness and Uniformed Public Services  
T Levels  
Travel and Tourism and Airline Services  
ESOL (English for Speakers of Other Languages)

**“With 100+ years of experience, we are a leading institution in vocational education. Join us for innovative vocational courses, including T-Levels, to gain sought-after skills. Our support system, facilities, and inclusive community empower learners to thrive. Start your journey at Newham College today.”**

Paul Stephen, Newham College Principal and Chief Executive

### **Are you looking for a brighter future after your GCSEs?**

Look no further than Newham College of Further Education.

Our strong track record in providing high-quality vocational education and training for over 100 years makes us the perfect choice for your future.

Our impressive Ofsted grading and high rankings in the national achievement rates table are a testament to our commitment to

offering training and education.

We strive to meet emerging needs and exceed education standards set by industry experts. Our vocational courses cover topics like business, science, engineering, digital technologies, health and social care, and construction.

We offer specialised courses that enable learners to develop skills that employers actively seek.

Our T-Levels program is one of our newest offerings: it provides a unique blend of practical and classroom-based learning.

Through this program, you can learn on the job while honing your theoretical skills. This edge that you gain from being adept in both practical and theoretical learning can be invaluable should you decide to pursue higher education.

In addition to our two main campuses in Stratford and East



Level 3	BTEC	Vocational	Advanced Apprenticeships
Level 2	BTEC	Vocational / GCSE resits	Intermediate Apprenticeships and Traineeships
Level 1	BTEC	Vocational	Foundation/Pre-Apprenticeship programmes
Level 2	GCSE resits		
Level 3:	T levels		

**NEWHAM  
COLLEGE  
LONDON**

Ham, the London City Institute of Technology (LCIoT) is located within 5 minutes of Canning Town Station and offers learners the chance to build a successful future in digital, construction, and engineering sectors.

With a top-class support system in place provided by experienced teachers and dedicated staff, learners are guaranteed a supportive environment that ensures academic and personal success. Our well-resourced libraries, IT suites, and classrooms offer a comfortable environment, and our workshops and studios are equipped with industry-standard facilities.

### **An inclusive community**

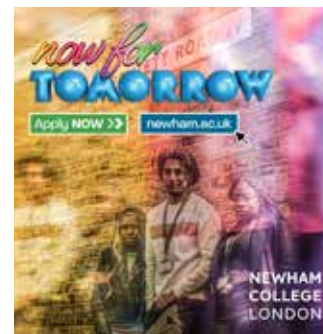
We strive to cater to all types of learners, which is why we offer a range of support services such as study skills workshops, one-to-one tutoring, and counselling services.

Our enrichment programs offer opportunities to develop leadership skills and explore personal interests.



Events like Black History Month, Mental Health Awareness Week, and Safeguarding and Safety are just a few examples of how our students rally around to create a positive and inclusive learning environment.

From cricket, to football, to futsal to table tennis to BMXing, our sporting teams have been remarkably successful in regional and national competitions, highlighting the talents of our diverse student community.



### **FIND OUT MORE**

**East Ham Campus, High Street  
South, E6 6ER  
T. 020 8257 4000**

**Stratford Campus, Welfare Road,  
E15 4HT**

**T. 020 8257 4000**

**E. [info@newham.ac.uk](mailto:info@newham.ac.uk)**

**W. [www.newham.ac.uk](http://www.newham.ac.uk)**

**f [NewhamCollege](https://www.facebook.com/NewhamCollege)**

**t [@NewhamCollege](https://twitter.com/NewhamCollege)**

**▶ [YouTube /NewhamCollege](https://www.youtube.com/channel/UCNewhamCollege)**

**📷 [@NewhamCollege](https://www.instagram.com/NewhamCollege)**

# NEWHAM COLLEGIATE SIXTH FORM CENTRE (NCS)

## SUBJECTS

English literature

Humanities

Science and  
Mathematics

**“If you wish to study in a highly academic environment with teachers who will prepare you to progress to some of the most competitive universities in the UK or abroad then join us!”**

Anita Lomax, Principal

Newham Collegiate Sixth Form Centre (NCS) is the academic A-level centre established by a group of Newham secondary schools: Cumberland, Kingsford, Lister, Little Ilford, Plashet, Rokeby, Royal Docks, Sarah Bonnell and Stratford School Academy. The NCS primarily offers places to students from its partner schools and other schools in Newham and surrounding areas.

The NCS offers a focused A-level curriculum for academic students, and the opportunity to study in a dedicated sixth form centre with high-quality facilities and a specialism in science and mathematics.

The ethos of the centre is to provide students with an academic education which also promotes self-development enabling and encouraging students to work hard and stretch themselves to achieve their full potential.

The A-level curriculum has a strong intellectual focus, and an emphasis on preparing students

for progression to Russell Group universities including Oxbridge. The NCS also supports student application to highly competitive US Ivy League Universities. The expert staff team provide a stimulating education, personalised curriculum, and opportunities to develop wider knowledge and experience within a supportive environment.

The centre has excellent facilities for students including state of the art science laboratories and iPads for all students as a learning tool. The centre also includes a lecture theatre, student library, quiet study centre, a student social centre and café.

Collegiate students will study four A-levels in their first year, and attend classes for five hours per week in each subject. Each student has a personal tutor and every student's



Level 3 | A-Level



**Newham Collegiate  
Sixth Form Centre**

A specialist centre for Science and Mathematics

programme is individually designed to maximise study opportunities and prepare students for successful progression to leading universities or competitive internships. Students also undertake private study in the dedicated sixth form library and learning resource centre to develop their independence in preparation for university.

Students will benefit from the centre's bespoke Super Curriculum which is designed to stretch interests outside of core A-level studies providing development as a deep thinker, critical enquirer and intellectual risk taker.

An emerging talent programme gives students an insight into the careers of accountancy, banking, law, engineering, medicine and dentistry. The programme provides skills and knowledge through workshops with industry leaders, internships, work placements and mentoring from industry experts.

A focused programme of preparation for university begins as soon as students start their Year 12 study. Students and staff work closely with leading universities including strategic partner UCL, to broaden students' understanding of different institutions subjects to familiarise them with the range of degree courses offered, and to start to target degrees they are particularly interested in.

**BMAT:** Biomedical Admissions Test

**UKCAT:** UK Clinical Aptitude Test

### What is it like to study here?

“The most unique thing about the NCS is the academic buzz that you feel around here. It's palpable, you can feel it here. Every corridor you walk in there's a conversation that's about something interesting or something academic, and you don't get that at any other institution. It's amazing!”

Haseeb

At the end of Year 12, all students undertake specific preparation for applications and admissions to higher education, including Oxbridge and Russell Group universities as well as scholarship applications to international universities. Students also receive assistance with entrance examinations e.g. BMAT, UKCAT, LNAT and STEP.

If you are predicted to achieve a set of impressive GCSE results, and you are interested in studying the subjects we offer, then Newham Collegiate Sixth Form Centre is an excellent place for your sixth form study.

### FIND OUT MORE

**Newham Collegiate Sixth Form  
Centre, 326 Barking Road,  
E6 2BB**

**T. 020 3011 4114**

**E. [enquiries@ncs6.org](mailto:enquiries@ncs6.org)**

**W. [www.TheNCS.co.uk](http://www.TheNCS.co.uk)**

**f [facebook.com/thencs](https://www.facebook.com/thencs)**

**t [@ncs6th](https://twitter.com/ncs6th)**

**LNAT:** Law National Aptitude Test

**STEP:** Sixth Term Examination Paper

# NEWHAM SIXTH FORM COLLEGE (NEWVIC)

## SUBJECTS

Art and design  
Business  
Computer Science  
Economics and Finance  
English Language  
English Literature  
Foundation Learning  
Functional Skills  
(English and Maths)  
Health, Social Care,  
Childcare and  
Education  
Humanities  
Information and  
Communication  
Technology  
Law  
Media  
Science and  
Mathematics  
Social Sciences  
Sports  
Travel and Tourism

**NewVic is a college with an excellent track record for successful student development and progression. We are a strong, inclusive community organised around the needs of individual students and focused on helping every individual succeed.**

The 2018-19 academic year saw NewVic achieve its first OFSTED 'Outstanding' for personal development, behaviour and welfare of students. We are a thriving, diverse and inclusive college located in the heart of east London, with more than over 30 years of expert experience. Since 1992, NewVic has supported more than 50,000 students to achieve their goals. Our 2021 A-Level and vocational results saw a record breaking year with a 97% pass rate and more than 50% of students achieving a triple distinction in vocational courses.

As one of London's largest sixth form colleges, with more than 2,700 students, we offer a wide range of opportunities for learning and personal development. We get to know every student well and provide them with individual attention and tailored support. Our focus is to provide students with everything they need to successfully progress to higher education, apprenticeships, training or employment.

Year upon year, the majority of our students progress to university, with a significant proportion securing places at Russell Group universities and those within the top 50 league tables.

NewVic offers a wide range of courses including more than 35 A-level subjects, Level 3 subsidiary diplomas, T Levels, specialist Honours, Professionals Programmes, Level 2 and 3 vocational courses, and foundation level courses. If you choose to join us, you will receive excellent teaching and support to achieve the success you deserve, and create the future you want.

We offer a challenging honours programme for students who are looking to develop higher level critical thinking skills and progression to elite universities. The programme is designed to stimulate intellectual curiosity and provide weekly lectures and activities with leading university professors and thinkers on a wide range of topics.

We will treat you with respect and challenge you academically. At NewVic we not only support and invest in your academic success, we also place a high value on your all round development. One of the ways we do this is by providing an exciting, high quality and

Level 3	A-Level	T Level	Vocational
Level 2		Vocational	GCSE
Level 1		Vocational	Foundation programmes



wide-ranging programme of student development and sports activities.

These activities will help you broaden your experience, develop your interests and passions, support your wellbeing and offer opportunities for fun, competition and skills development.

Our Nrich programme covers creative arts, sports, leadership, enterprise, health awareness, language power, understanding our communities and our world. We run activities on a daily basis during lunchtimes, after college and on Wednesday afternoons. Clubs and societies you can participate in include DJing, debating, cricket, basketball and leadership academies, STEM clubs, creative writing. Student development activities are fully inclusive and open to all students.

At NewVIC you will also experience unique opportunities and development through our extensive network of former students, academic and industry partnerships.

We want all students to enjoy their time at NewVIC, unlock their

### Gauri Shaji

“Do not be doubtful, put yourself out there, get involved. In the end it will possibly be the best decision you have made.”

Gauri studied Level 3 Health and Social Care. She was a former Plashet School student and aspires to pursue medicine. Gauri was also part of the sports academy and in the Women’s Netball Team as well as being a Here Come the Girls Ambassador, getting involved in organising charity events, raising awareness on mental health and more.



potential, and achieve their goals for successful progression to higher education or the world of work.

### FIND OUT MORE

**Newham Sixth Form College (NewVIC), Prince Regent Lane, E13 8SG**

**T. 020 7473 4110**

**E. [info@newvic.ac.uk](mailto:info@newvic.ac.uk)**

**W. [www.newvic.ac.uk](http://www.newvic.ac.uk)**

**f [fb.me/newhamsix](https://www.facebook.com/newhamsix)**

**t [@talknewvic](https://twitter.com/talknewvic)**

**i [/newvic\\_london](https://www.instagram.com/newvic_london)**



# SIX 21

## SUBJECTS

Art and design  
Biology  
Business  
Chemistry  
Computing  
Drama  
Economics  
English Literature  
Extended Project Qualification  
Further Mathematics  
Geography  
Government and Politics  
History  
Mathematics  
Music/Music Technology  
Physics  
Psychology  
Sociology  
Spanish

**“Universities want thinkers. Employers seek problem solvers. So schools have to change. At Six 21 we offer a top academic education, and a lot more - incredible opportunities to develop into extraordinary individuals.”**

Peter Hyman,  
Co-director of Big Education

School 21 is an exciting place to learn. Outstanding leadership has produced a highly effective school in a short time. Excellent teaching across the school and in every subject allows all groups of pupils to achieve equally well and we are rated “Outstanding” in all categories by Ofsted.

From School 21 comes a pioneering new sixth form, Six 21 which opened September 2017. Six 21 is a dynamic

and exciting place for those with the ambition to go to top universities, find fulfilling careers and make a difference to the world.

School 21’s experienced team has a track record developing exceptional students who are eloquent speakers, skilled problem solvers and creative thinkers.

At Six 21, we believe in the balanced development of Head (academics), Heart (empathy) and Hand (creating).

### **A unique programme of learning**

We have created a bespoke programme for every student at Six 21, drawing upon an unrivalled network of organisations and opportunities that the school’s founders and influential trustees have built up over the last five years.







- > A-levels taught by outstanding teachers employing the most advanced teaching techniques - working in partnership with top universities (including King's College London and Oxford and Cambridge colleges).
- > Research projects, academic courses, and design projects ensure all students extend their knowledge, skills and experiences far beyond the normal for A-Level students, providing the best foundation for success and independence at university and beyond.
- > Real-world learning - long term, ongoing placements with our network of partners: project internships in the fields of law, medicine, the arts, high tech businesses.
- > Leadership development and service learning. The chance



### What is it like to study here?

'I couldn't have asked for a better sixth form experience. Six 21 perfectly accommodates for students who are looking for a great extracurricular experience alongside a two-year journey full of academic growth and success. Six 21 pushes you out of your comfort zone, through life-changing experiences, preparing you for life after sixth form.' - Farhad Uddin



'I had no idea why I joined Six21 but coming out the other side I definitely don't regret my decision. They've turned me from a quiet and shy student to a confident, ambitious and pioneering entrepreneur, they prepared me to take on whatever the world has to throw at me!' - Israr Malik

to make a difference, address challenges, and campaign for change in your local community and internationally.

Are you ambitious, academic and enterprising? Do you want a sixth form experience that goes beyond the ordinary? If so, Six 21 could be the place for you.

### FIND OUT MORE

**Six 21, Pitchford Street,  
E15 4RZ**  
**T. 020 8262 2121 Ext. 621**  
**E. [info@six21.org.uk](mailto:info@six21.org.uk)**  
**W. [www.six21.org.uk](http://www.six21.org.uk)**  
**🐦 [@six21\\_uk](https://twitter.com/six21_uk)**

# ST ANGELA'S URSULINE SIXTH FORM

Outstanding Sixth Form  
Provision, Ofsted 2022

## SUBJECTS

Art

Business Studies

Computer Science

Drama

Economics

English Literature

Extended Project

Humanities (Geography  
and History)

Mathematics and  
Further Mathematics

Media

Modern Foreign  
Languages (French,  
German and Spanish)

Music

Politics

Sciences (Biology,  
Chemistry and Physics)

Social Science  
(Sociology and  
Psychology)

Technology - Product  
Design and Textiles

Theology

**“A very warm welcome to St Angela’s Ursuline Sixth Form as you consider the next stage of education and your aspirations for university and working life. Your choice of post-16 education in both the institution you choose and the courses you wish to study is one of the most important decisions you will make in your life. With a long history of excellence in the post-16 sector and the most successful non-highly selective sixth form in Newham, St Angela’s is the right place to take on the challenge of the biggest educational leap you will ever make and importantly**

**it is with people who care about you.”**

Mark Johnson, Headteacher

St Angela’s Ursuline Sixth Form is situated in the heart of Forest Gate. We have an excellent, longstanding tradition of providing an outstanding education, filled with excitement and challenge. We offer advanced learning courses and a huge range of super enrichment opportunities. The mechanisms to ensure you are a holistic learner and the sixth form’s outstanding support make our progression rates to university truly exceptional at 98%.





### What was it like to study here?

“Not only did I benefit from the great support we got in lessons, I was also amazed by the number of enrichment activities on offer.”  
Sam, now studying Mathematics at Durham University

### What was it like to study here?

“There is so much opportunity provided in the sixth form to set you on the right path for further education and life. Constant support and guidance is provided to motivate you towards success.”  
Sara, now studying Medicine at Queen Mary University of London

Our links to universities are well developed including partnerships which provide unique opportunities, reduced offers and distinct scholarships. We also hold incredible networks to the world of work, ultimately creating innovative opportunities for all students to grow as individuals as well as part of the very special community that is St Angela's Sixth Form.

### FIND OUT MORE

**St Angela's Ursuline Sixth Form,  
St George's Road, Forest Gate,  
E7 8HU**  
**T. 020 8475 7339**  
**E. [sixth.form@stangelas-ursuline.co.uk](mailto:sixth.form@stangelas-ursuline.co.uk)**  
**W. [www.stangelas-ursuline.co.uk](http://www.stangelas-ursuline.co.uk)**  
**[@StAngelas\\_Sch](https://twitter.com/StAngelas_Sch)**

# ST BONAVENTURE'S 6TH FORM

## SUBJECTS

Art  
Biology  
Business Extended Diploma  
Business Studies  
Chemistry  
Computing  
Economics  
English Literature  
Geography  
German  
Government and Politics  
Graphic Art  
History  
ICT  
Mathematics and Further Mathematics  
Media  
Music  
Physics  
Product Design (3D design)  
Psychology  
Religious Studies  
Sociology  
Spanish  
Sport Science

**“We get to know every one of our students individually and provide support to them every step of the way. We make sure parents are kept fully aware of their progress and our small class sizes of approximately 13 per class means we provide more personalised teaching. St Bonaventure’s has all the advantages of a traditional 6th form with excellent mentoring and pastoral care.”**

Wayne Templeman,  
Director of 6th Form

We teach traditional subjects that are highly rated by the most prestigious universities and we make sure that our students make exceptional progress. Our 6th form is co-educational and we provide

an outstanding education to young men and women wishing to study a variety of subjects, both academic and vocational.

Our results are consistently good and we have the best results in the country in the highly regarded humanities and social sciences. Our new 6th form building which opened in January 2017 is a dynamic centre for post-16 learning, supporting achievement, aspiration and progression.

Standards and expectations are very high at St Bonaventure’s and we boast longstanding partnerships with successful academic institutions and employers. St Bonaventure’s has a fantastic



Level 3 | A-Level | BTEC | Vocational



reputation on a local, national and international level and many of our alumni have made positive impacts in many areas of society since we were founded in 1877.

Choose us if academic success is as important to you as it is to us.

### FIND OUT MORE

**St Bonaventure's 6th Form**  
**Boleyn Road, Forest Gate,**  
**E7 9QD**

**T. 020 8472 3844 ext 130/178**

**E. 6thform@stbons.org**

**W. www.stbons.org/**

**f stbons**

**tweeter.com/stbons**

Life at St. Bonaventure's 6th Form is a vibrant and enriching experience. Our 6th Form fosters a warm sense of community, where students and teachers collaborate closely to achieve academic success.



The bonds formed here are enduring, making each day at St. Bonaventure's an inspiring journey of growth, friendship, and academic achievement. Beyond academics, our school promotes personal growth and leadership development, providing countless opportunities to engage in extracurricular activities, charity work, and sports, ensuring we grow into well-rounded individuals equipped to make a positive difference in our community.

Mehzabin Mahbub - Head Girl

Noel Dawit, an accomplished A\*AB who is set to pursue a degree in Land Economy at Cambridge University, said 'Working as hard as possible whilst keeping faith has been so important. The school has been pivotal for me to get to this stage with supporting staff and the Catholic ethos being instilled throughout'

St Bonaventure's embodies the values of charity, kinship and community extraordinarily well. Teachers are passionate in getting the best out of students and exert immense levels of dedication and patience. What gives me the highest level of gratification is how the students are



allowed to develop and mature at St Bonaventure's, truly becoming the best possible version of themselves to get the very best results.

Chideraa Ogu - Head Boy

# OTHER PATHWAYS

Although the colleges and further education providers in Newham offer an extensive range of study options and facilities, you might be looking for a particularly specialised course available locally or in a neighbouring borough. You can find out more about what is on offer at other education and training providers by visiting their websites, or contacting them directly through the details listed below.

## **BARKING AND DAGENHAM**

Barking and Dagenham College,  
Rush Green Campus, Dagenham  
Road, Romford, Essex, RM7 0XU  
**T.** 020 8090 3020  
**E.** <https://www.barkingdagenhamcollege.ac.uk/contact/get-in-touch>  
**W.** [www.barkingdagenhamcollege.ac.uk](http://www.barkingdagenhamcollege.ac.uk)

Brook 6th Form and Academy,  
Rainham Road South,  
Dagenham East, RM10 7FN  
**T.** 020 3773 4670  
**E.** [interest@elutec.co.uk](mailto:interest@elutec.co.uk)  
**W.** <https://www.brooksixthform.com/>

## **EPPING**

New City College, Epping  
Forest Campus  
Borders Ln, Loughton IG10 3SA  
**T.** 0330 135 9000  
**E.** [info@ncclondon.ac.uk](mailto:info@ncclondon.ac.uk)  
**W.** [www.ncclondon.ac.uk/epping-forest](http://www.ncclondon.ac.uk/epping-forest)

## **HACKNEY**

Access Creative College  
50 Hoxton Street, Shoreditch  
London N1 6LP  
**T.** 0207 613 8380  
**E.** [admissions@accesscreative.ac.uk](mailto:admissions@accesscreative.ac.uk)  
**W.** [www.accesscreative.ac.uk](http://www.accesscreative.ac.uk)

BSix Sixth Form College,  
Kenninghall Road, London E5 8BP  
**T.** 0203 137 5320  
**E.** [info@bsix.ac.uk](mailto:info@bsix.ac.uk)  
**W.** [www.bsix.ac.uk](http://www.bsix.ac.uk)

New City College, Hackney  
Campus, Falkirk Street,  
Hackney N1 6HQ  
**T.** 0330 135 9000  
**E.** [info@ncclondon.ac.uk](mailto:info@ncclondon.ac.uk)  
**W.** <https://www.ncclondon.ac.uk/hackney-campus>

## **NEWHAM**

Diva Apprenticeships  
Unit 221 Stratford Workshops  
Burford Road, E15 2SP  
**T.** 020 3189 1784  
**E.** [hello@divaapprenticeships.com](mailto:hello@divaapprenticeships.com)  
**W.** [www.divaapprenticeships.com](http://www.divaapprenticeships.com)

## **REDBRIDGE**

New City College, Redbridge  
Campus, Chadwell Heath Lane  
Chadwell Heath, Essex RM6 4XT  
**T.** 0330 135 9000  
**E.** [info@ncclondon.ac.uk](mailto:info@ncclondon.ac.uk)  
**W.** <https://www.ncclondon.ac.uk/campus/redbridge-campus>

## **TOWER HAMLETS**

New City College, Poplar  
High Street, E14 0AF  
**T.** 020 7510 7510  
**E.** [info@ncclondon.ac.uk](mailto:info@ncclondon.ac.uk)  
**W.** <https://www.ncclondon.ac.uk/tower-hamlets-campus>

Mulberry UTC  
64 Parnell Road, London E3 2RU  
**T.** 020 3137 7024  
**E.** [info@mulberryutc.co.uk](mailto:info@mulberryutc.co.uk)  
**W.** [www.mulberryutc.org](http://www.mulberryutc.org)

City Gateway  
The Pavilion, Import Building  
2 Clove Crescent  
London E14 2BE  
**T.** 020 3727 6310  
**E.** [info@citygateway.org.uk](mailto:info@citygateway.org.uk)  
**W.** [www.citygateway.org.uk](http://www.citygateway.org.uk)

East London Arts and Music  
45 Maltings Close, London E3 3TA  
**T.** 020 7515 2159  
**E.** [info@elam.co.uk](mailto:info@elam.co.uk)  
**W.** [www.elam.co.uk](http://www.elam.co.uk)

## **WALTHAM FOREST**

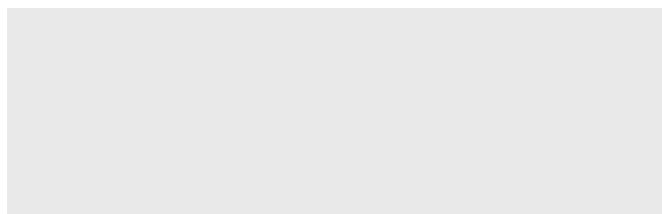
Leyton Sixth Form College,  
Essex Road, Leyton, E10 6EQ  
**T.** 020 8928 9000  
**E.** [enquiry@leyton.ac.uk](mailto:enquiry@leyton.ac.uk)  
**W.** [www.leyton.ac.uk](http://www.leyton.ac.uk)

Sir George Monoux College,  
190 Chingford Road, E17 5AA  
**T.** 020 8523 3544  
**E.** [info@sgmc.ac.uk](mailto:info@sgmc.ac.uk)  
**W.** [www.sgmc.ac.uk](http://www.sgmc.ac.uk)

Waltham Forest College,  
707 Forest Road, Walthamstow,  
E17 4JB  
**T.** 020 8501 8000.  
**E.** [myfuture@waltham.ac.uk](mailto:myfuture@waltham.ac.uk)  
**W.** [www.waltham.ac.uk](http://www.waltham.ac.uk)



# GOING TO UNIVERSITY



## GOING TO UNIVERSITY GIVES YOU THE OPPORTUNITY TO TRANSFORM YOUR LIFE

A university degree can provide entry to a wide range of careers and opportunities. Those who have degrees are also more likely to be in employment than those with lower level qualifications.

According to the Office for National Statistics, graduates will earn substantially more over their working life than non-graduates, so a degree can be considered a worthy investment.

In order to progress in specific careers, such as being a doctor, you will be required to study medicine, to degree level. An increasing number of careers and employers now require degrees (especially for senior roles). These include nursing, teaching and many computing and technical jobs.

At university, you can:

- study a subject you love at a higher level and be taught by experts in your chosen field
- study in a global community of students bringing rich and varied experiences
- acquire and develop the higher level skills that are prized by employers
- enhance your personal development, skills and experience through internships, volunteering, working with researchers and studying abroad.

## START THINKING ABOUT UNIVERSITY NOW

You will get many opportunities to find out about university while you are a student in Newham. Take every opportunity you can to visit campuses and get involved in summer schools, masterclasses

and other activities. These experiences will all help you to gain a greater understanding of what studying at university is all about.

## CHOOSING YOUR SUBJECTS

It is important to know what the entry requirements for the university course you are interested in studying are. Requirements may vary between universities, but some courses, such as medicine, require you to have studied specific subjects.

There are some subjects preferred by selective universities. These are sometimes referred to as “facilitating subjects”, which include:

- Maths and Further Maths
- English Literature
- Physics
- Biology
- Chemistry
- Geography
- History
- Languages (classic and modern).

The table below provides some examples of the core Level 3 subjects you may need to apply for specific courses at university.

For more information about choosing your subjects and entry requirements, have a look at Informed Choices, the Russell Group’s guide to making decisions about your post 16 education. The Russell Group represents 24 leading UK universities which are committed to maintaining the very best research, an outstanding teaching and learning experience and unrivalled links with business and the public sector.

Suggested A-level pathways which target admission to selective universities	Core A-level subjects (students choose three subjects)	Facilitating subjects (students choose one subject)
Medicine/dentistry	Maths, further maths, physics, chemistry, biology	English literature, history, geography or a modern foreign language
Medical sciences	Maths, physics, chemistry, biology, psychology	English literature, history, geography or a modern foreign language
Veterinary science	Maths, chemistry, biology, English literature	English literature, history, geography or a modern foreign language
Biological sciences	Maths, chemistry, biology, psychology	English literature, history, geography or a modern foreign language
Physical sciences	Maths, further maths, physics, chemistry	English literature, history, geography or a modern foreign language
Maths	Maths, further maths, physics	English literature, history, geography or a modern foreign language
Engineering pathway	Maths, further maths, physics, chemistry	English literature, history, geography or a modern foreign language
Politics, philosophy and economics	Maths, English literature, history, economics	A modern foreign language or geography
Humanities	Students choose four subjects from the following: English literature, history, geography, religious education, a modern foreign language, psychology or biology	



## UNIVERSITY FEES AND FINANCE – FUNDING IS AVAILABLE

Going to university costs money. You will have tuition fees to pay and you will need money for your living costs: things like your rent if you live away from home, money for food, travel, clothes and books and materials for your course. The good news is there are loans to help you with all of these costs.

### TUITION FEE LOANS

You will probably have seen in the news that students will pay up to £9,250 a year for undergraduate courses and most degree courses last for three years. You do not have to pay these fees up front. Instead the government, through the Student Loans Company, will provide you with a loan to pay your fees. The fees will be paid directly to the university for all eligible students.

### REPAYING YOUR LOAN

Student loans are designed to be manageable and realistic. You are liable to repay your loan in the April which falls three years after the start of your course, but you will only make repayments if you are earning more than £27,295 on plan 2, and £22,015 a year on plan 1. Once you earn more than £27,295 on plan 2, £22,015 a year on plan 1, you pay 9% of your income above £27,295 on plan 2, £22,015 a year on plan 1.

You're on Plan 1 and have an income of £33,000 a year, meaning you get paid £2,750 each month.

Calculation:

£2,750 – £1,834 (your income minus the Plan 1 threshold) = £916

**Ieva Petravičiute**  
Ieva studied A-levels in film studies (A), history (B) and psychology (A), and a Level 3 subsidiary diploma in TV and film production (D\*). She is going on to study digital film production at the University of Greenwich.



“The teachers at NewVlc are very understanding and know what is best for me, challenging me to reach my full potential. I have learned so many things during my course that I am sure will help me in the future. I have also been involved in the NewVlc Dance Company and the Raleigh Programme. During my time at NewVlc, I have built up my confidence which has led me to doing great things such as work experience at MTV.”

9% of £916 = £82

This means the amount you'd repay each month would be £82.

Example, Your annual income is £27,000 and you're paid a regular monthly wage. This means that each month your income is £2,250 (£27,000 divided by 12). This is over the Plan 1 monthly threshold of £1,682.

You will pay interest on your tuition fee loan, and you need to be aware that the amount you owe will increase each year with interest. Interest charged varies depending on if it is Plan 1, 2, 4 or post graduate loan rate. Go to <https://www.gov.uk/repaying-your-student-loan/what-you-pay> for more information. If your repayments don't start because you're earning less than £27,295 on plan 2, £22,015 a year on plan 1, the interest on your loan will increase at the rate of inflation.

Repayments are normally taken automatically from your salary, and monthly repayments are linked to your income and not the amount borrowed. If you haven't paid off the loan after 30 years on plan 2, and 25 years on plan 1, your loan will be written off.

### LIVING COST LOANS

You will be able to get some help with your living costs in the form of a loan. Living cost loans are determined by your family income and individual circumstances such as whether you are studying in London or living at home.

### SCHOLARSHIPS AND BURSARIES

Each university will offer scholarships and bursaries and will have details of these on their website. Scholarships and bursaries do not have to be repaid.

**Rumana Ali, ex-Plasht School, ex-NewVlc 6th Form College. Now studying at Oxford University.**

Rumana achieved A-levels in English literature (A\*), government and politics (A) and history (A\*) and an AS-level in economics (A). She is now studying history at St. Hilda's College, Oxford University



# WHERE DO I START



- List your qualifications or predicted grades, your skills and interests.
- Think about where you want to get to - what do you want to be doing in five years' time?
- How will you get there? What qualifications or training will you need?
- Research different courses.
- Research different education providers.
- Find out the application deadlines for courses you are interested in.
- Find out about open days and open evenings.
- Find out your current school deadlines for tutor references.
- If in doubt, ask!

# WHERE TO GET ADVICE AND INFORMATION?

## IF YOU ARE AT SCHOOL

If you are in years 10 or 11, contact your school careers adviser or careers teacher.

## IF YOU ARE OVER 16

You can call Our Newham Work on 020 3373 1101 if you are 16-18 to talk to an advisor about your options.

Contact the National Careers Service for more information, advice and guidance on careers and the qualifications and skills needed for them. Visit [www.nationalcareersservice.direct.gov.uk](http://www.nationalcareersservice.direct.gov.uk) for an online chat or call 0800 100 900 to speak to a careers adviser.

## FOR MORE INFORMATION ON APPRENTICESHIP OPPORTUNITIES

Talk to your careers adviser about apprenticeships or contact Newham College, Building Crafts College or the London Design and Engineering UTC in Newham for information about pathways into apprenticeships.

Visit [www.gov.uk/become-apprentice](http://www.gov.uk/become-apprentice) or talk to your school careers adviser to discuss your options.

To search for apprenticeship vacancies, go to [www.gov.uk/apply-apprenticeship](http://www.gov.uk/apply-apprenticeship)

- It is free to register and once you have set up your account you can receive alerts to tell you about new vacancies. For information and

guidance visit [www.findapprenticeship.service.gov.uk/apprenticeshipsearch](http://www.findapprenticeship.service.gov.uk/apprenticeshipsearch) where you can download:

- How to write a winning apprenticeship application.
- Progress your career with higher apprenticeships.
- Apprenticeship support guide.

Our Newham Work maintains a database of Newham residents aged 18 and over who are interested in finding out about apprenticeship opportunities. Register your interest by getting in touch with the engagement team. Visit [www.newham.gov.uk/Pages/Services/Apprenticeships.aspx](http://www.newham.gov.uk/Pages/Services/Apprenticeships.aspx) or call 020 3373 1101 or email [ournewhamwork.engagementteam@newham.gov.uk](mailto:ournewhamwork.engagementteam@newham.gov.uk). Drop into the Stratford Office between 9am-4.30pm (Monday-Friday), or make an appointment by calling Our Newham Work, 112-118 The Grove, Stratford, E15 1NS

## FOR MORE INFORMATION ON BURSARIES AND MORE

16-19 Bursary Fund

To find out more visit [www.gov.uk/1619-bursary-fund](http://www.gov.uk/1619-bursary-fund)

For more information visit [www.gov.uk/care-to-learn](http://www.gov.uk/care-to-learn) or call the Learner Support Line on 0800 121 8989.

Dance and Drama Awards

For more information visit [www.gov.uk/dance-drama-awards](http://www.gov.uk/dance-drama-awards)

To find your local University Technical College (UTC) and register your interest, visit

[www.utcolleges.org/utcs/](http://www.utcolleges.org/utcs/)

## GOING TO UNIVERSITY

Further advice on:

Student finance

<https://www.gov.uk/student-finance>

University application process

[www.ucas.com](http://www.ucas.com)

National Union of Students

[www.nus.org.uk](http://www.nus.org.uk)

Studying abroad

[www.thestudentworld.com](http://www.thestudentworld.com)

Russell Group universities:

For information on choosing your subjects and entry requirements, have a look at Informed Choices <https://russellgroup.ac.uk/policy/publications/informed-choices/> the Russell Group's excellent guide to making decisions about your post-16 education.

 [www.newham.gov.uk](http://www.newham.gov.uk)

 [www.facebook.com/newhamcouncil](http://www.facebook.com/newhamcouncil)

 [www.twitter.com/NewhamLondon](http://www.twitter.com/NewhamLondon)

 [newhamlondon](https://www.instagram.com/newhamlondon)