



## **Statement of Common Ground**

**Between**

**London Borough of Newham**

**And**

**London Borough of Havering**

**Stage: Newham Submission Draft Local Plan (Reg. 19)**

**Date: 16 April 2025**

## **1. Executive Summary**

- 1.1. A statement of common ground is a written record of the progress made by plan-making authorities during the process of planning for strategic cross-boundary matters. It documents the strategic matters where effective cooperation has led to cross-boundary challenges and opportunities being identified, whether there is agreement between bodies in how these should be addressed, and how the strategic matters have evolved throughout the plan-making process. It is also a way of demonstrating at examination that plans are deliverable over the plan period, and based on effective joint working across local authority boundaries.
- 1.2. This Statement of Common ground addresses key strategic matters between the two signatories, the London Borough of Newham and London Borough of Havering, as relevant to the preparation of the Newham Draft Submission Local Plan and its progression to public Examination.
- 1.3. Strategic matters overseen by other organisations will be addressed in other SoCGs, in order to streamline the process of reaching agreements with each party. Where key strategic issues overlap between different organisations that Newham have signed statements of common ground with (e.g. the delivery of housing targets), these interrelations are summarised in the [Duty to Cooperate Statement](#) (2024) and the Duty to Cooperate Addendum (2025).
- 1.4. The document is intended to be 'live', updated as circumstances change. Please see the Governance Arrangements section of the statement for more details.

## **2. Parties Involved**

- 2.1. Newham Council, the Local Planning Authority for the London Borough of Newham, which is an inner London Borough in East London situated between three rivers: the Lea to the west, Thames to the south and Roding to the east. London Borough of Newham is bordered by several other London Boroughs, including Tower Hamlets, Hackney, Waltham Forest, Havering, and Barking and Dagenham. Across the River Thames lies the Royal Borough of Greenwich. Newham's administrative boundaries also contain 65% of the London Legacy Development Corporation (LLDC) area, which acted as the planning authority for the Queen Elizabeth Olympic Park and surrounding area until the return of planning powers to the boroughs on the 1<sup>st</sup> December 2024.

AND

- 2.2. The London Borough of Havering, which is an outer London borough in north east London. Over 50% of the borough is Green Belt. It borders the London Boroughs of Redbridge, Barking and Dagenham, the Essex authorities of Epping Forest District Council, Thurrock and Brentwood Boroughs, and on the other side of the River Thames, the London Borough of Bexley.
- 2.3. Newham is strategically located at the intersection of the London-Stansted-Cambridge-Peterborough Corridor, which is centred on enterprise and innovation within emerging sectors such as digital, media, life sciences, telecommunications and advanced manufacturing, and the Thames Estuary Creative and Cultural Industries Corridor, which adds to the borough's

significance. It contains three Opportunity Areas: the Olympic Legacy (which also includes parts of the other Host Boroughs) Poplar Riverside (which crosses the boundary with Tower Hamlets) and Royal Docks and Beckton, which is also the home of London's only Enterprise Zone and Europe's largest regeneration area.

- 2.4. The London Legacy Development Corporation (LLDC) Mayoral Development Corporation returned planning powers back to the London Boroughs of Newham, Tower Hamlets and Waltham Forest and Hackney on the 1st of December 2024. As such, key strategic matters for the parts of the LLDC that fall within Newham's administrative boundaries are also addressed in the new Newham Draft Submission Local Plan, and are subject to the matters addressed in this statement of common ground.

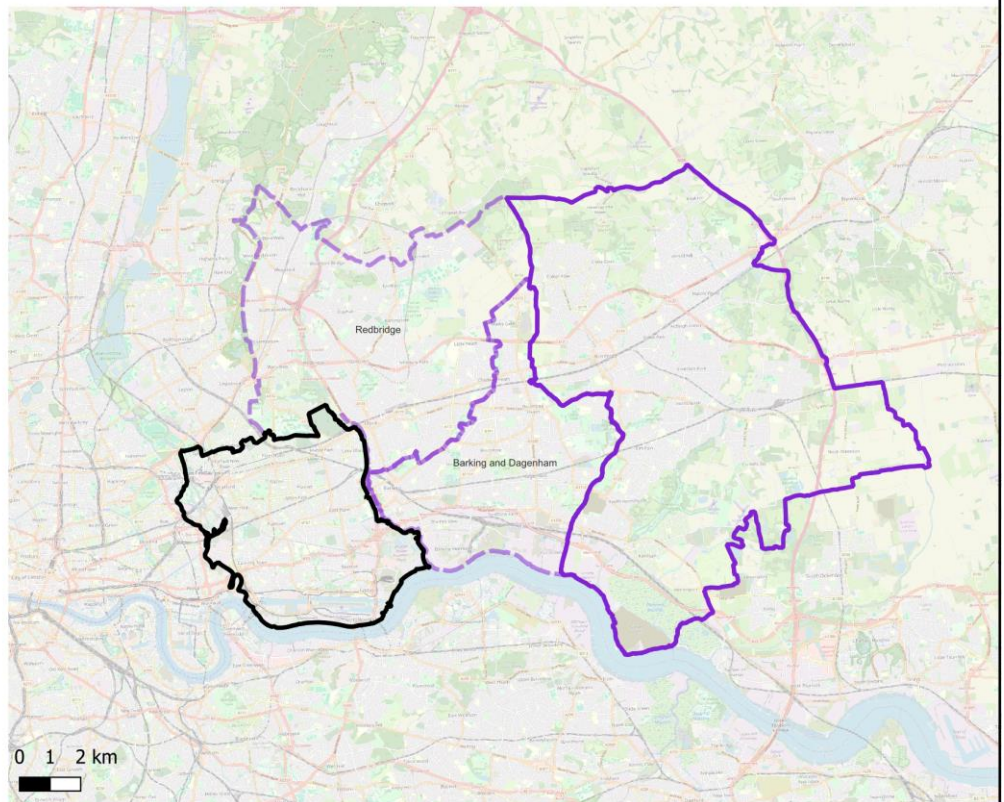
### 3. Strategic geography

- 3.1. The map below identifies the spatial representation of the key strategic matters addressed, alongside the administrative areas of the two plan-making authorities.
- 3.2. As noted above, the LLDC returned planning powers back to the London Borough of Newham on the 1st of December 2024. Where relevant, the Newham draft Local Plan has retained and evolved site allocations and designations from the LLDC Local Plan (2020).

Map: Strategic Geography of relevance to the Statement of Common Ground between London Borough of Newham and London Borough of Havering

#### Legend

-  LB Newham Boundary
-  LB Havering boundary
-  LBR Boundary
-  LBBD Boundary
- OpenStreetMap



## 4. Background

- 4.1. Newham Council has prepared the Draft Submission Local Plan and published it for consultation between 19<sup>th</sup> July and 20<sup>th</sup> September. This is the version of the plan that the Council considers to be 'legally compliant' and 'sound' and will be submitted to the Planning Inspectorate for examination in 2025. The council has undertaken two rounds of consultation prior to this, to inform the Newham Draft Submission Local Plan. These include:
- Issues and Options Consultation, which took place between 18 October and 17 December 2021; and
  - Draft Local Plan Consultation (Regulation 18), which took place between the 9 January and 20 February 2023.
- 4.2. The [Duty to Cooperate Statement](#) (DtC Statement) was published as part of Newham's Reg. 19 consultation, which provides a summary of our engagement with London Borough of Havering, as a duty to cooperate partner, as part of the preparation of the new Newham Local Plan. The table below provides an extract of the relevant key strategic matters identified as part of this process and the corresponding paragraphs in the Duty to Cooperate Statement.

Key Strategic Matter	DtC Statement relevant paragraphs
Gypsy and Traveller need	4.42, 4.43, 4.47-4.50
Waste management and the Joint Waste Plan	4.189-4.191, 4.195, 4.196, 4.199-4.202

- 4.3. The national and regional policy context forming the background to this statement of common ground is also detailed in the Duty to Cooperate Statement (2024), under 'Chapter 2: Legislative and national policy context' and 'Chapter 3: Demonstrating compliance with the duty to cooperate'.
- 4.4. During the Reg. 19 consultation process, Newham approached Havering to agree the process leading to the preparation and signing of this statement of common ground. As part of this, Havering recognised there are outstanding strategic matters as set out in the table above.

## 5. Key Strategic Matters

### 5.1. Gypsy and Traveller need

- 5.2. In December 2023, the Government updated the Planning Policy for Traveller Sites (PPTS). The PPTS was further amended in December 2024 with the PPTS definitions updated in line with the October 2022 Court of Appeal ruling, which found the previous 2015 PPTS to be unlawful in its discrimination against those forced to give up their nomadic lifestyles due to disability or old age.
- 5.3. As part of the Local Plan evidence base, Newham has prepared a Gypsy and Traveller Accommodation Assessment (2022), which found that there was no need for new pitches for households that meet the Planning Policy for Traveller Sites definition of Gypsies and

Travellers at the time. However, the study found a need for 23 pitches for households that did not meet the Planning Policy for Traveller Sites definition, prior to the aforementioned ruling and change to the PPTS definition.

- 5.4. Currently the Newham Draft Submission Local Plan allocates one site as a safeguarded Gypsy and Traveller accommodation site, which is an existing site containing 15 pitches. The safeguarding of this site does not count towards meeting identified future need, albeit there is scope to extend the site by a few pitches to the south of the allocation.
- 5.5. Havering has identified the need for 225 pitches for Gypsy and Travellers and Travelling Showpeople to 2031, the sites have been allocated through the LB Havering Local Plan to meet this need. Therefore, there is no spare capacity. This need includes those who did not meet the former planning definition and undetermined households.

5.6. Record of agreements and/or disagreements:

- London Borough of Newham and London Borough of Havering agreed to continue to engage via local plan making processes, should circumstances change.

5.7. **Waste management and the Joint Waste Plan**

- 5.8. Policy SI 8 of the London Plan sets the strategic target for the equivalent of 100 per cent of London's waste to be managed within London's border by 2026, otherwise known as 'net self-sufficiency'.
- 5.9. In order to help achieve net self-sufficiency, the London Plan policy requires boroughs to demonstrate how their Local Plans will meet assigned waste apportionment targets. Newham's waste apportionment target is as follows: 383,000 tonnes of household, commercial and industrial waste management capacity by 2021 and 407,000 tonnes by 2041. Havering's waste apportionment target is as follows: 370,000 tonnes of household, commercial and industrial waste management capacity by 2021 and 393,000 tonnes by 2041.
- 5.10. The East London Waste Authority (ELWA) was formed in 1986 as a Statutory Waste Disposal Authority (WDA), responsible for the disposal of waste collected by London Boroughs of Barking & Dagenham, Havering, Newham and Havering. In 2023, ELWA published an updated Joint Strategy for East London's Resources and Waste (2027-57). The Joint Strategy sets out the aims, objectives, priorities and actions for the Partner Authorities on preventing and reducing waste, increasing reuse and recycling, supporting improvements with infrastructure, and monitoring performance. Newham, Havering, Barking and Dagenham and Redbridge work collaboratively with ELWA to address Duty to Cooperate matters. This includes the East London boroughs keeping ELWA informed of the progress on the update of the East London Joint Waste Plan.
- 5.11. The existing East London Joint Waste Plan, which was adopted in early 2012, expired in 2021. The plan was drafted within a notably different planning framework context: before the National Planning Policy Framework was introduced, before the current National Planning Policy for Waste, and under earlier iterations of the London Plan.

- 5.12. In 2022, Newham met with Officers from the GLA to discuss next steps with regards to the preparation of the Joint Waste Plan. The GLA indicated that they were not supportive of the East London boroughs allocating waste sites through updates to our respective Local Plans. Instead, they advised east London to work collaboratively to produce an up-to-date Joint Waste Plan.
- 5.13. Since 2020, Newham have held regular meetings with the London Boroughs of Barking and Dagenham, Havering and Redbridge on updating the adopted 2012 East London Joint Waste Plan. In 2021 Newham and the East London boroughs collectively commissioned Anthesis to provide an updated evidence base to support the preparation of the East London Joint Waste Plan. This was followed up in 2022 with a supplementary piece of work which sought to correct errors in calculating capacity for the sub-region.
- 5.14. In 2022 the East London boroughs published the evidence base, which had been prepared to support the refresh of the East London Joint Waste Plan. This evidence base showed that there was sufficient waste management capacity in East London to meet the London Plan apportionment targets for Local Authority Collected Waste and Commercial and Industrial waste streams and to manage the equivalent of 100 per cent of Construction & Demolition waste arising over the next fifteen years. The findings of this evidence base informed the draft policies in Newham's Submission Draft Local Plan.
- 5.15. The Regulation 18 Joint East London Waste Plan was consulted on between 29th July and 16th September 2024, and outlines the waste sites within Newham and Havering that will be safeguarded to meet our apportionment target, as well as how Newham and Havering will seek to manage other waste streams. The latest evidence, which has been refreshed as part of the new East London Joint Waste Plan, sets out that East London has more than enough management capacity to meet our apportionment target.
- 5.16. Some changes have been made to the draft East London Waste Plan as a result of the Regulation 18 consultation, including suggested changes to the list of safeguarded sites. Although discussions with London boroughs and the GLA continue regarding capacity sharing, a programme of work on the Regulation 19 East London Waste Plan has been drafted with likely publication period dates for Spring 2025.
- 5.17. Record of agreements and/or disagreements:
- London Borough of Newham and London Borough of Havering agreed to continue to cooperate via the Joint Waste Plan making processes.

## **6. Governance agreements**


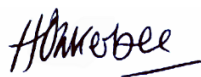
- 6.1. This statement of common ground will be reviewed:
- 6.1..1. Whenever agreement is reached on any outstanding matters. Or
  - 6.1..2. At key milestones in progress towards addressing strategic matters. Or
  - 6.1..3. At each subsequent key stage of the plan making process, as it progresses towards adoption.

6.2. The table below outlines existing cooperation forums that will be used to continue to engage each other and progress the key strategic matters.

Key Strategic Matter	Forum	Details/frequency of the forum
Gypsy and Traveller need	GLA's London Plan borough engagement programme, including through the All London Boroughs Planning Officers meetings.	ALBPO meets monthly to discuss a range of issues of importance to the London boroughs and the GLA. The GLA will provide the timeframe and format for engagement on the new London Plan in due course.
Waste management and the Joint Waste Plan	East London Joint Waste Plan making processes	The working group meet regularly, and will set up further duty to cooperate discussions with boroughs seeking to use east London's Identified Capacity Surplus.
	London Waste Planning Forum	Held quarterly to discuss strategic waste matters affecting London.

## 7. Signatories

7.1. We confirm that the information in this statement and referred to documents reflects the joint working to date undertaken between London Borough of Newham and London Borough of Havering towards addressing the identified strategic matters.

<p><b>Signed on behalf of London Borough of Newham:</b></p>  <p><b>Name:</b> Ellie Kuper Thomas</p> <p><b>Date:</b> 14/03/2025</p> <p><b>Position:</b> Policy Manager, Planning and Development Directorate</p>	<p><b>Signed on behalf of London Borough of Havering:</b></p>  <p><b>Name:</b> Helen Oakerbee</p> <p><b>Date:</b> 16/04/2025</p> <p><b>Position:</b> Director of Planning and Public Protection.</p>
--	--