

VIEW 14 - ORCHARD DOCKYARD EAST

BASELINE CUMULATIVE MODEL SHOT



EXTRUSION OF LEAMOUTH PENINSULA TO 30 RESIDENTIAL STOREYS (105.3M AOD). FOR REFERENCE ONLY.

Site Extrusion



HYPOTHETICAL DEVELOPMENT OF THREE 30-STOREY TALL BUILDINGS (103.5M AOD).

Proposed 30 storey towers



GENERAL KEY:

- Under Construction
- Consented Development
- Recently Completed

LOCATION KEY:



VIEW COMMENTARY:

Proposal visible, with sense of depth readily perceptible subject to position and orientation of buildings.

VIEW 15 - ORCHARD PLACE FOOTPATH

BASELINE CUMULATIVE MODEL SHOT



EXTRUSION OF LEAMOUTH PENINSULA TO 30 RESIDENTIAL STOREYS (105.3M AOD). FOR REFERENCE ONLY.

Site Extrusion



HYPOTHETICAL DEVELOPMENT OF THREE 30-STOREY TALL BUILDINGS (103.5M AOD).

Proposed 30 storey towers



GENERAL KEY:

- Under Construction
- Consented Development
- Recently Completed

LOCATION KEY:



VIEW COMMENTARY:

Proposal visible, with potential to enhance the skyline subject to position and orientation of buildings.

VIEW 16 - BOTANIC SQUARE GARDEN

BASELINE CUMULATIVE MODEL SHOT



EXTRUSION OF LEAMOUTH PENINSULA TO 30 RESIDENTIAL STOREYS (105.3M AOD). FOR REFERENCE ONLY.

Site Extrusion



HYPOTHETICAL DEVELOPMENT OF THREE 30-STOREY TALL BUILDINGS (103.5M AOD).

Proposed 30 storey towers



GENERAL KEY:

- Under Construction
- Consented Development
- Recently Completed

VIEW COMMENTARY:

Proposal visible, with no material impact to skyline.

LOCATION KEY:



VIEW 17 - LIMMO PENINSULA ECOLOGICAL PARK

BASELINE CUMULATIVE MODEL SHOT



EXTRUSION OF LEAMOUTH PENINSULA TO 30 RESIDENTIAL STOREYS (105.3M AOD). FOR REFERENCE ONLY.

Site Extrusion



HYPOTHETICAL DEVELOPMENT OF THREE 30-STOREY TALL BUILDINGS (103.5M AOD).

Proposed 30 storey towers



GENERAL KEY:

- Under Construction
- Consented Development
- Recently Completed

VIEW COMMENTARY:

Proposal occluded by interposing development. No visibility.

LOCATION KEY:



VIEW 18 - SILVERTOWN WAY

BASELINE CUMULATIVE MODEL SHOT



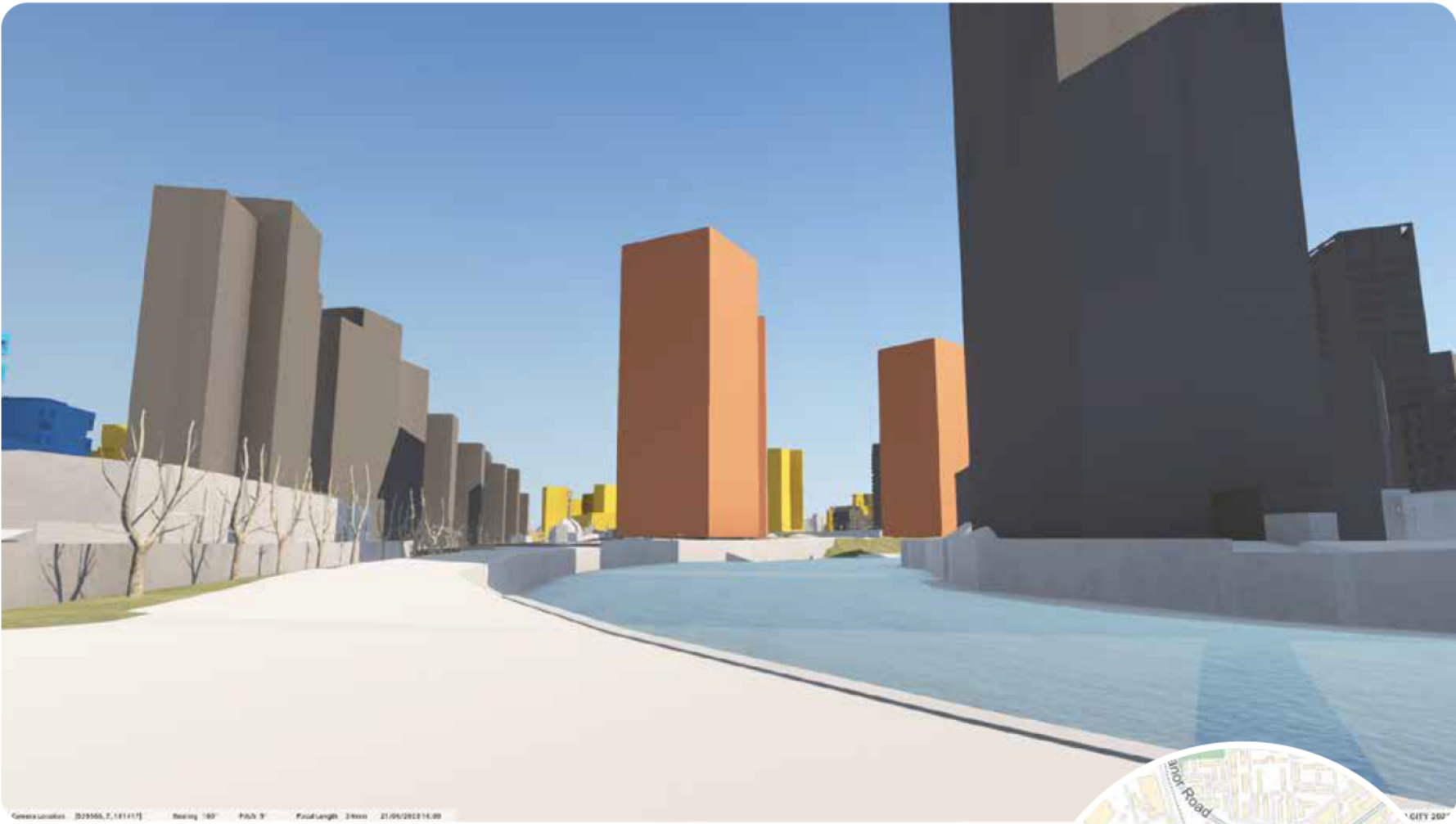
EXTRUSION OF LEAMOUTH PENINSULA TO 30 RESIDENTIAL STOREYS (105.3M AOD). FOR REFERENCE ONLY.

Site Extrusion



HYPOTHETICAL DEVELOPMENT OF THREE 30-STOREY TALL BUILDINGS (103.5M AOD).

Proposed 30 storey towers



GENERAL KEY:

- Under Construction
- Consented Development
- Recently Completed

VIEW COMMENTARY:

Proposal visible, with potential to enhance the skyline.

LOCATION KEY:



VIEW 19 - ABBOTT ROAD

BASELINE CUMULATIVE MODEL SHOT



EXTRUSION OF LEAMOUTH PENINSULA TO 30 RESIDENTIAL STOREYS (105.3M AOD), FOR REFERENCE ONLY.

Site Extrusion



HYPOTHETICAL DEVELOPMENT OF THREE 30-STOREY TALL BUILDINGS (103.5M AOD).

Proposed 30 storey towers



GENERAL KEY:

- Under Construction
- Consented Development
- Recently Completed

VIEW COMMENTARY:

Proposal visible, with potential to enhance the skyline subject to position and orientation of buildings.

LOCATION KEY:



VIEW 20 - JUNCTION OF AVONDALE AND PERCY ROAD

BASELINE CUMULATIVE MODEL SHOT



EXTRUSION OF LEAMOUTH PENINSULA TO 30 RESIDENTIAL STOREYS (105.3M AOD), FOR REFERENCE ONLY.

Site Extrusion



HYPOTHETICAL DEVELOPMENT OF THREE 30-STOREY TALL BUILDINGS (103.5M AOD).

Proposed 30 storey towers



GENERAL KEY:

- Under Construction
- Consented Development
- Recently Completed

VIEW COMMENTARY:

Proposal glimpsed, with no material change to skyline composition.

LOCATION KEY:



VIEW 21- BOREHAM AVENUE

BASELINE CUMULATIVE MODEL SHOT



EXTRUSION OF LEAMOUTH PENINSULA TO 30 RESIDENTIAL STOREYS (105.3M AOD). FOR REFERENCE ONLY.

Site Extrusion



HYPOTHETICAL DEVELOPMENT OF THREE 30-STOREY TALL BUILDINGS (103.5M AOD).

Proposed 30 storey towers



GENERAL KEY:

- Under Construction
- Consented Development
- Recently Completed

VIEW COMMENTARY:

Proposal visible, with potential to enhance the skyline.

LOCATION KEY:



VIEW 22 - THAMES PATH (1)

BASELINE CUMULATIVE MODEL SHOT



EXTRUSION OF LEAMOUTH PENINSULA TO 30 RESIDENTIAL STOREYS (105.3M AOD). FOR REFERENCE ONLY.

Site Extrusion



HYPOTHETICAL DEVELOPMENT OF THREE 30-STOREY TALL BUILDINGS (103.5M AOD).

Proposed 30 storey towers



GENERAL KEY:

- Under Construction
- Consented Development
- Recently Completed

VIEW COMMENTARY:

Proposal glimpsed, with no material change to skyline composition

LOCATION KEY:



VIEW 23 - THAMES PATH (2)

BASELINE CUMULATIVE MODEL SHOT



EXTRUSION OF LEAMOUTH PENINSULA TO 30 RESIDENTIAL STOREYS (105.3M AOD). FOR REFERENCE ONLY.

Site Extrusion



HYPOTHETICAL DEVELOPMENT OF THREE 30-STOREY TALL BUILDINGS (103.5M AOD).

Proposed 30 storey towers



GENERAL KEY:

- Under Construction
- Consented Development
- Recently Completed

VIEW COMMENTARY:

Proposal visible, with potential to enhance the skyline.

LOCATION KEY:



VIEW 24 - THAMES PATH (2)

BASELINE CUMULATIVE MODEL SHOT



EXTRUSION OF LEAMOUTH PENINSULA TO 30 RESIDENTIAL STOREYS (105.3M AOD). FOR REFERENCE ONLY.

Site Extrusion



HYPOTHETICAL DEVELOPMENT OF THREE 30-STOREY TALL BUILDINGS (103.5M AOD).

Proposed 30 storey towers



GENERAL KEY:

- Under Construction
- Consented Development
- Recently Completed

VIEW COMMENTARY:

Proposal glimpsed, with no material change to skyline composition.

LOCATION KEY:



VIEW 25 - THAMES PATH (4)

BASELINE CUMULATIVE MODEL SHOT



EXTRUSION OF LEAMOUTH PENINSULA TO 30 RESIDENTIAL STOREYS (105.3M AOD). FOR REFERENCE ONLY.

Site Extrusion



HYPOTHETICAL DEVELOPMENT OF THREE 30-STOREY TALL BUILDINGS (103.5M AOD).

Proposed 30 storey towers



GENERAL KEY:

- Under Construction
- Consented Development
- Recently Completed

VIEW COMMENTARY:

Proposal visible, with potential to enhance the skyline.

LOCATION KEY:



MONTAGU EVANS

**70 ST MARY AXE,
LONDON, EC3A 8BE**

TEL: +44 (0)20 7493 4002



WWW.MONTAGU-EVANS.CO.UK
LONDON | EDINBURGH | GLASGOW | MANCHESTER