

# Newham Safety Partnership Strategic Plan 2025-28

April 2025



# Contents

Foreword	3
About Newham Safety Partnership	4
Borough Profile	5
Key Achievements 2022-25	6
Current Challenges	7
Summary of Resident Feedback	8
Supporting Partnerships, Strategies and Plans	13
Summary Priorities	17
Increase Trust, Engagement and Equity	18
Reduce Neighbourhood Crime	22
Reduce Hate Crime and Extremism	25
Reduce Modern Day Slavery and Exploitation	28
Reduce Reoffending	31
Reduce Serious Violence	34
Reduce Violence Against Women and Girls	37
Newham Safety Partnership Delivery Model	40
Help and Support	41

# Foreword

We are very pleased to introduce the Newham Community Safety Strategy 2025-28, which sets out the priorities of the Newham Safety Partnership. No single agency can address the complexities involved in keeping communities safe, so the Newham Safety Partnership coordinates the activity of a broad range of agencies and provides the opportunity to collaborate to make our Borough a safer place to live, work, and visit. There have been great achievements since we published the last Community Safety Strategy in 2022 but recognise that significant work is required to address new and existing challenges and that Newham has some of the highest crime levels in London, particularly in relation to issues such as violence. This plan complements the work that is already in place to tackle youth safety, domestic abuse, sex work and substance misuse and supports the broader ambitions to make Newham a place where young people thrive, residents are healthier and happier, inequality is reduced and neighbourhoods are safer and more prosperous. The priorities set out in this strategy are based upon an assessment of crime and disorder issues across the borough and reflect the views of partners and local stakeholders. We hope this document helps you understand what the purpose of the Newham Safety Partnership is and how we will continue to work in partnership to make Newham a safer place now and in the future.

**Sean Mcdermid**  
**Joint Chair of Newham Safety Partnership**

**Councillor Amar Virdee**  
**Joint Chair of Newham Safety Partnership**

# About Newham Safety Partnership

The Newham Safety Partnership (NSP) was established under the Crime and Disorder Act 1998, and is responsible for developing and implementing strategies to address crime and anti-social behaviour in the borough. It is made up of a range of statutory and non-statutory bodies and works on the principle that no single agency can address all drivers of crime and antisocial behaviour, and that effective partnership working is vital to ensuring safer communities. The NSP ensures statutory duties are met including:

- Providing a framework for sharing information to support local problem solving
- Undertaking strategic assessments of need which inform the action planning cycle
- Reducing re-offending
- Commissioning Domestic Abuse Related Death Reviews (established under s9 Domestic Violence, Crime and Victims Act 2004)
- Ensuring the Serious Violence Duty is met, including understanding local need and formulating a Serious Violence Plan

The NSP must analyse local crime issues and set annual priorities to allocate resources effectively.

## Objectives of the CSP

- **Coordinate Partnership Efforts:** To collaboratively reduce crime, disorder, substance misuse, anti-social behaviour, and re-offending through effective coordination among all partners.
- **Develop a Strategic Plan:** To create a comprehensive strategy every three years that outlines the partnership's approach to reducing crime, disorder, substance misuse, anti-social behaviour, and re-offending.
- **Enhance Service Delivery:** To facilitate partnership working within Newham to improve the delivery of services and enhance the quality of life for residents.
- **Facilitate Joint Decision-Making:** To oversee the collaboration of various agencies in Newham, ensuring they come together to make informed joint decisions on crime and disorder reduction.
- **Manage Grant Funding Effectively:** To manage crime-related grant funding responsibly, ensuring proper accountability for performance and expenditure is maintained.

# Borough Profile



Over 364,000 residents, one of the biggest populations in London and the third fastest growing borough



Second youngest age profile of any borough in London with over one-third of the population under 25 years old and over nine in ten aged under 65



Over 72% of residents are from Black, Asian, and ethnically diverse communities with over a hundred different languages spoken



Stratford is the busiest train station in the UK plus there are a number of other locations that generate significant visitor numbers including ExCel, City Airport, Queen Elizabeth Park and Westfield Shopping Centre



Over a quarter of our neighbourhoods are in the 20% of most deprived neighbourhoods in the country



After housing costs, almost half of our residents live in poverty with rents representing 65% of average wages compared to 30% across the UK



Highest overall level of homelessness in England



Over a quarter of our residents are paid below the London Living wage



Educational attainment in Newham is positively above the national average across all stages of the education and has consistently improved across recent years



However, we have also seen marginal increase of 0.7% in pupils with no qualifications in recent years



42% of children who came to the Youth Justice Service in May 2021 were of Black heritage, despite only making up 23% of Newham's general population



440% more crimes were recorded in the most income-deprived areas in 2023 in London, compared to the least income-deprived

More information can be found [here](#).

# Key Achievements 2022-25

Priority	Achievements
<b>Neighbourhood Crime and ASB</b>	<ul style="list-style-type: none"> <li>Enhanced the partnership operational response in hotspot areas including improved lighting and CCTV</li> <li>Co-ordinated activity in key hotspots of East Ham &amp; Stratford</li> <li>Improved reporting process and extended operational hours of ASB Team</li> <li>Developed Combatting Drugs Partnership to focus on this as a driver of crime</li> <li>Introduced a new Newham Integrated Community Enforcement (NICE) model to improve partnership delivery.</li> </ul>
<b>Hate Crime</b>	<ul style="list-style-type: none"> <li>Engaged with residents to better understand hate crime within the community</li> <li>Worked with young people, empowering them to report hate crime incidents</li> <li>Raised awareness and enhanced services to better assist hate crime victim.</li> </ul>
<b>Violence Against Women and Girls</b>	<ul style="list-style-type: none"> <li>Launched a new Sex Work Strategy</li> <li>Delivered training on high risk domestic abuse and developed two intervention programmes for perpetrators</li> <li>Recommissioned community domestic abuse services to better support survivors</li> <li>Published a campaign against misogyny and street harassment and improved support for women in the night time economy.</li> </ul>
<b>Serious Violence</b>	<ul style="list-style-type: none"> <li>Developed Newham's Serious Violence Strategy and delivered the Violence and Vulnerability Reduction Action Plan</li> <li>Launched a new Youth Safety Strategy</li> <li>Delivered an additional £600k of prevention and early intervention services to tackle youth violence and robbery</li> <li>Installed 4 knife amnesty bins across the Borough to reduce the presence of weapons in our communities.</li> </ul>
<b>Modern Slavery and Exploitation</b>	<ul style="list-style-type: none"> <li>Delivered a Modern Day Slavery partnership action plan</li> <li>Established local processes to improve identification and referral to appropriate support</li> <li>Reviewed Newham's procurement supply chains to ensure there are measures to identify and prevent Modern Slavery.</li> </ul>
<b>Reduce reoffending</b>	<ul style="list-style-type: none"> <li>Secured funding for an Integrated Offender Management Coordinator funded through MOPAC embedded within Probation services</li> <li>Utilised grant funding to reduce inequality amongst youth by providing local opportunities</li> <li>Delivered Y2A hub for 18–25-year-olds on probation and 17-year-olds transitioning from the Youth Justice Service to adult probation.</li> </ul>

# Current Challenges

The total number of offences have **increased by 10.5%** (by 3,757 offences) and Newham has the third highest in London

Offences in Newham are at their **highest for 3 years** with the highest percentage increase in London

**Stratford and East Ham** are the main crime hotspots in Newham and recorded offences have increased across most crime types in both locations when compared to the previous year

The crimes with the greatest increases are **theft** (3,332 offence increase) followed by **robbery** (343 offence increase). These were also the 2 with the greatest percentage increase (33% & 26% respectively)

Theft was the top offence type in Newham and has been **increasing year on year for the last 3 years**. Both shoplifting and theft from the person have increased by over 1,000 offences each

**Violence against the person** was the second highest offence type in Newham and has been increasing year on year for the last 3 years. Newham has the third highest number of violence with injury offences in London

**Weapon offences** have increased for the last three years from 589 Sept 21 to Aug 2022 to 772 from Sept 23 to Aug 24

**Young adults (18-24 yrs)** are more likely to be victims of crime than other age groups for most crime types

**Young people (15-17 yrs)** are more likely to commit weapon enabled crime than any other age and 30-34 year olds commit more hate crime and domestic abuse offences

**Men** are more likely to commit crime than women, which is evidenced across all offence types. The highest number of female perpetrators are identified for theft (20%), violence (24%) and hate crime (25%) offences

Robbery with **women** victims increased by 8% from last year

**Asian people** are identified as having a high proportion of **victims** for weapon enabled crime (36% of all victims), hate crime (32%) and domestic abuse (36%). The ethnic breakdown varies for victims across other crime types

# Summary of Resident Feedback

To support the development of Newham's renewed Safety Partnership Strategy, a borough-wide survey was carried out to gather views from residents, staff, partners, businesses and local organisations. The consultation was widely promoted to ensure broad and inclusive participation.

The survey was shared across key stakeholders including council services, police, health, probation, the voluntary sector and community networks. It was regularly promoted through a wide range of channels including:

- Newham Bulletin (sent to over 32,000 residents) Councillor and partner networks
- Staff newsletters and Community Neighbourhood letters
- Social Media
- Met Police Forums
- Safer Business Network
- Neighbourhood Watch groups
- Voluntary, Community and Faith Sector newsletters VAWG / Commissioned Services
- Community Events

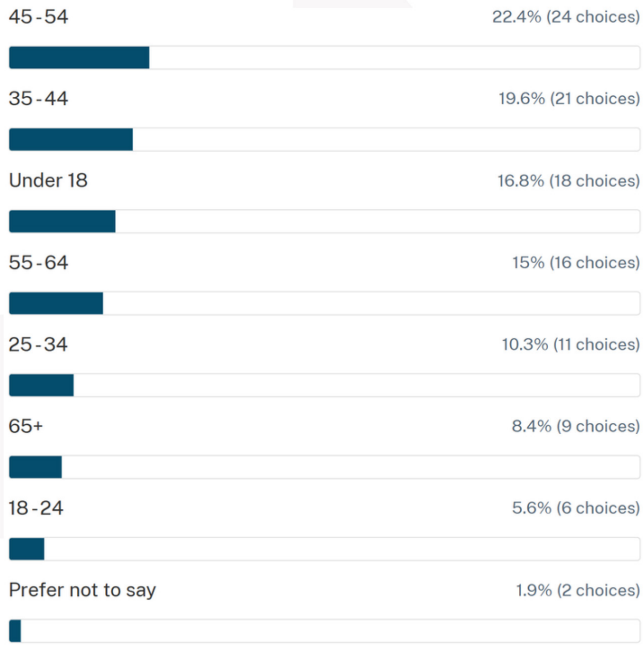
In addition, Enforcement Officers handed out over 500 printed leaflets in town centres and high streets to residents and businesses to encourage further participation. While the estimated reach of the consultation was over 50,000 people, we received 107 survey responses.

The feedback collected will help shape the final Newham Safety Partnership Strategy, ensuring it reflects the real priorities, concerns and experiences of those who live and work in Newham.

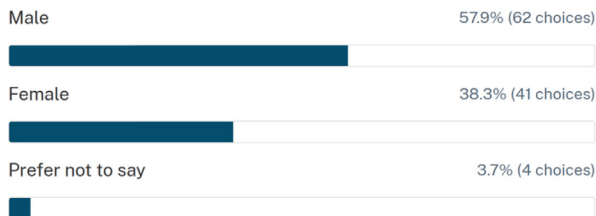


## Survey Outcomes

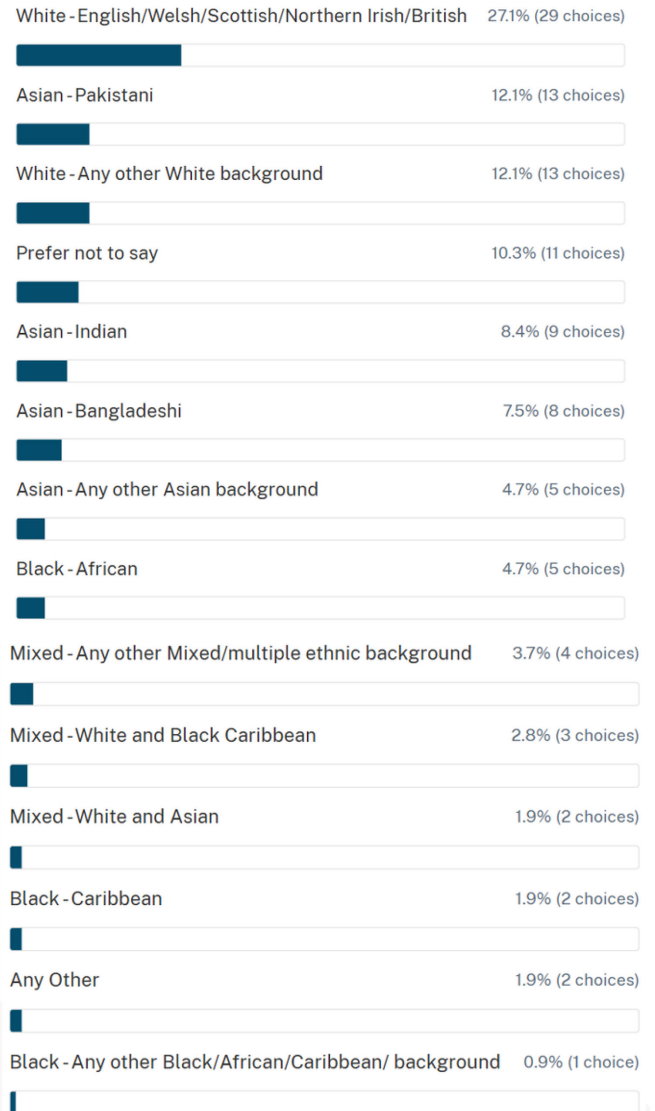
### What is your age group?



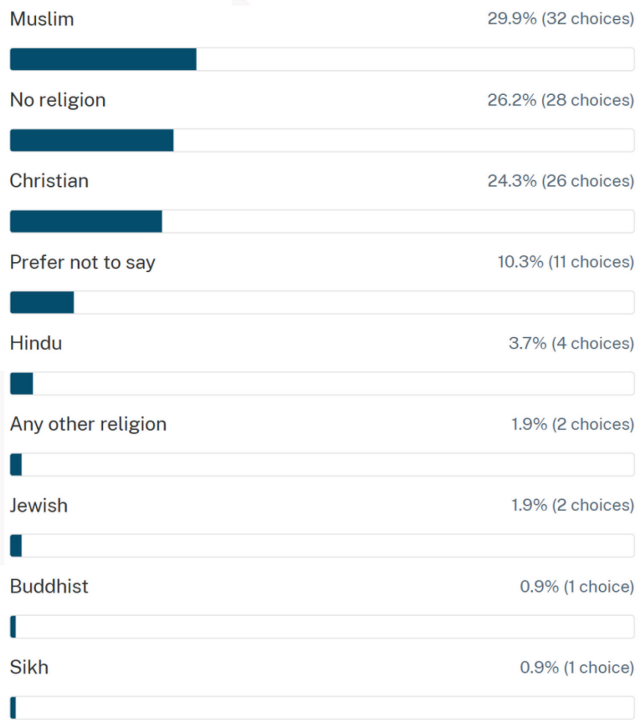
### What is your gender?



### What is your ethnicity?



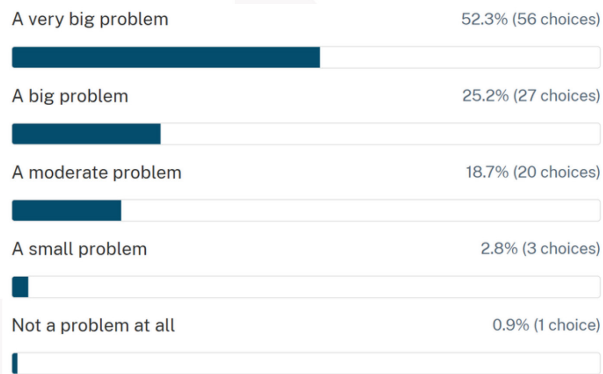
**What is your religion?**



**Do you agree with the priorities outlined in the draft strategy?**



**To what extent do you think crime and community safety are an issue in Newham?**



## You said...

We don't see enough police or enforcement officers on the street

Stop box-ticking and take real action on crime

Public spaces feel unsafe, especially for women and girls and the support for women and girls isn't working

There's too much loitering at betting shops and bus stops

Anti-social behaviour is getting worse, especially on high streets

Fly-tipping and public urination are making the area feel unsafe

Drug dealing and drug use are a major concern

We need more CCTV and better lighting

Address rogue landlords and overcrowded HMOs causing ASB

Youth need more to do. They're getting drawn into crime

The Council doesn't follow up or act on what we report

Discrimination and inequality need to be addressed across services

Fly-tipping and nuisance behaviour go unpunished

Some areas like Forest Gate are overlooked

We don't feel heard, previous consultations made no difference

More support is needed for victims, not just enforcement

Through Council scrutiny, public forums, and independent advisory groups, increase the transparency and accountability of how partnership resources are used

## We listened...

We will increase visible enforcement and taskings through the NICE partnership model across the whole borough.

We will deliver targeted ASB action plans in Stratford and East Ham through multi-agency partnerships.

We will implement Project ADDER and the Combating Drugs Partnership to disrupt drug supply chains and improve access to treatment.

We will use CCTV to detect and penalise fly-tipping and urination, alongside improvements to the public realm.

We will expand CCTV coverage and carrying out Environmental Visual Audits (EVAs) and night audits to improve safety in public spaces.

We will support young people through the Youth Safety Strategy and Our Young, Our Future, which provide safe spaces and early intervention.

We will improve ASB reporting, with a focus on victim-centred services and coordinated responses.

We will conduct an annual crime and community safety survey, with results published and shared through public panels and engagement.

We will improve public space safety through the Open Spaces Action Plan, Ask Angela, and the Women's Night Safety Charter, alongside VAWG campaigns, focus groups, and venue training.

We will deliver intelligence-led enforcement and multi-agency tasking through the NICE model.

We will tackle irresponsible business practices and improving public protection through licensing and trading standards.

We will work with landlords and housing providers to better manage ASB in residential areas.

We will use CCTV, environmental enforcement, and all available powers to hold offenders accountable.

We will develop borough-wide action plans to ensure consistent delivery across all neighbourhoods.

We will embed trauma-informed support pathways for victims of VAWG and modern slavery.

We will deliver the Race Action Plan and designing services that reflect cultural needs and tackle disproportionality.

We will be accountable for utilising resources to where they are most needed

# Supporting Partnerships, Strategies and Plans

Preventing and reducing crime is a statutory responsibility for many of our local public authorities and other partners. On that basis, there must be a strong emphasis on working collaboratively, across the system, on common priorities. In order to achieve this, the Newham Safety Partnership have ensured that these links across local partnerships are maintained and strengthened in a variety of ways including;

- Regular strategic updates for cross cutting priorities with other relevant partnerships
- Referrals pathways and multi-agency processes that can work across the partnership to share best practice and employ a holistic approach for vulnerable people at risk of victimisation or involvement in crime
- Ensuring the right representatives are on our respective boards and panels to share best practice and signpost access to other services for cross cutting issues.

This plan will also support the broader ambitions of Newham to create a fairer borough— one where every resident has access to the opportunities, support and the services they need to thrive. This includes:

- Improving the health, well-being and happiness of our residents
- Enabling Community Wealth Building so that inequality, poverty, and racial disproportionality can be tackled, alongside the housing crisis
- Being the best place in the world for a child and young person to grow up
- Ensuring the borough has clean and safe neighbourhoods
- Involving residents in decision-making as part of our people-power agenda of participatory democracy.

## Principles and commitments:

- **Public Health Approach** – We will focus on early intervention and prevention, and the wider determinants of crime and community safety, including disproportionality, employment, skills, health, housing and environment
- **Contextual Safeguarding** – We will focus on contextual safeguarding, taking a whole-family approach and accounting for every context and environment that adolescents encounter beyond their family. This involves adopting a trauma-informed approach, using a local understanding of the impact that adverse childhood experiences have on involvement in crime and ASB
- **Resident Involvement** – We will co-produce solutions with our local community to understand local priorities and develop an approach that is responsive and effective in increasing feelings of safety
- **Collaboration** – We will work across agencies by sharing data and intelligence and support each other in operational delivery where appropriate or necessary to achieve outcomes. This will allow a more efficient and effective approach and better-targeted interventions
- **Supporting Victims** – We will ensure a focus on victims and strengthen local systems to support victims, reduce repeat victimisation, and recognise that perpetrators of violence can often be victims too.

## Regional context

[The Mayor's Police and Crime Plan 2025-2029](#) sets out the regional priorities and provides important context and opportunities to work collaboratively across different boroughs that share the same problems. The key aims of the Mayor's Plan are:

- Reducing violence and criminal exploitation
- Building safer, more confident communities
- Supporting and overseeing reform of the MPS; and
- Improving the criminal justice system and supporting victims.

The police alone cannot deliver these outcomes, and the Plan sets out how the Mayor's Office for Policing and Crime (MOPAC), the Metropolitan Police Service (MPS) and partner agencies including local councils, health services, criminal justice partners and TFL/Transport Operators will continue to work together to reduce and prevent crime now and over the long-term. The priorities in the 2025-2029 plan align closely with the work we need to do in Newham and we can learn from what our colleagues across London are doing and support innovation and best practice across the capital.

## Local context and supporting plans

The Newham Safety Partnership works closely with other strategic partnership boards, including the Safeguarding Adults Board, Health and Wellbeing Board, and Safeguarding Children Partnership. Each board has its own strategic priorities but there are many overlapping agendas. These include (but are not limited to):

- Adult and children's safeguarding including Sex work, Modern Day Slavery and other exploitation
- Violence including Youth Safety
- Domestic Abuse and Women's Safety
- Prevent, counter terrorism and extremism
- Reoffending
- Health harms related to drugs and alcohol.

The Newham Safety Partnership believes that crime is everybody's business and that there must be a strong emphasis on working collaboratively, across the system, on common priorities.

We are committed to this approach and ensure we are working efficiently with clear lines of accountability through assessing our local co-ordination arrangements between the Newham Safety Partnership, Children's Partnership, Safeguarding Adults Boards and the Health and Wellbeing Board, to understand need, assess best practice, identify what needs to be done and the right organisations to deliver them.

The three boards work together to ensure there is focus on Early Intervention, Prevention, and tackling Disproportionality. These three ambitions will be woven into this Newham Safety Partnership strategy and realised through the annual delivery plans to follow.

Plans and partnerships that the Newham Community Safety Strategy supports:



Examples of key, cross cutting work locally includes:

- **Youth Safety Strategy** - Working collaboratively with the Newham Safeguarding Children's Partnership we will support the delivery of the Youth Safety Strategy, which wants to see that all children and young adults are protected from crime, criminal or sexual exploitation and from being drawn into gang activity and serious violence. The strategy is focused upon ensuring all Newham children and young adults are able to thrive, reach their best potential, and experience fair and equitable access to services and support. It has six key principles which align with the Newham Safety Partnership plan; 1) work in partnership; 2) tackle racism, inequality and disproportionality; 3) prevent and intervene early; 4) support and protect; 5) deter and disrupt; and 6) create safer spaces.
- **Sex Work Strategy** to ensure we continue to develop and improve the response to sex work in the borough and provides the framework and shift required to adopt a Public Health whole borough community response to sex work through; Striving to balance the needs of both residents and sex workers, ensuring that the strategy is accessible and clear to all stakeholders; Supporting sex workers to stay safe and lead healthier lives; Addressing anti-social behaviour and improving community safety for residents affected by sex work in their neighbourhoods; Promoting a non-criminalising, multi-agency, strategic approach that engages with residents and sex workers in the local area.
- **Combating Drugs Partnership** - Combating illegal drugs and the harm they cause is an issue which needs action from a range of local partners. At a local level, success is reliant on these partners working together to understand their population and how drugs are causing harm in their area, any challenges in their local system and the changes that are needed to address them. The Newham Combating Drugs Partnership (CDP) is a multi-agency forum that is accountable for delivering the outcomes in the Government's 10 year drug strategy of: breaking drug supply chains, delivering a world-class treatment and recovery system, and achieving a shift in the demand for drugs. They provide a single setting for understanding and addressing shared challenges related to drug-related harm, based on the local context and need. Illegal drugs are such a significant driver of crime and the work of the Newham Safety Partnership that it is essential that they work collaboratively with the CDP to ensure that challenges and opportunities are shared to enable outcomes to be delivered successfully.
- **Our Young, Our Future** - which aims to make Newham the best place for children and young people: to have access to the best start in life; have access to inclusive play and activities in our early year settings, our Youth Zones and in our parks. To also be happy, healthy and safe; with as many opportunities available to them so that they are able to reach their full potential and thrive. Young people's ambitions and futures are central to everything we do as a borough as we amplify our agenda throughout our communities including in all its education settings; through our partnerships with public bodies and local businesses; and across our neighbourhoods because all of us have a responsibility for Newham to be the best place for them to grow up in and be their best selves as they navigate growing up into adulthood.



# Summary Priorities

The Strategic assessment and other evidence that has been reviewed has identified the following priorities as the areas to focus on for the next three years:

- **Trust, Engagement and Equity** – We will work to understand the issues that matter most to the community, to build trust in services and ensure we are responsive to the diverse needs of the borough. This work will impact and support the delivery of all of the other specific priorities
- **Neighbourhood Crime** - this includes anti-social behaviour, substance misuse and acquisitive crimes such as robbery and theft
- **Hate Crime and Extremism** - most people treat each other with respect and dignity but not everyone shares those same values, perpetuating hate, terror and community tensions
- **Modern Day Slavery and Exploitation** – this includes any form of human trafficking, slavery, servitude or forced labour including criminal and sexual exploitation
- **Reducing re-offending** – we will reduce reoffending by supporting offenders with housing, physical and mental health issues, substance misuse, education and employment



- **Serious Violence** - we will deliver a coordinated local response to identify the major causes of violence and seek to provide early interventions to help prevent the spread of violence
- **Violence Against Women and Girls** – we will work to reduce violence, misogyny, and other forms of abuse towards women and girls so that they can travel, work and go out without fear.

As we work towards these priorities, we will ensure that we concentrate on early intervention, preventative action, and reducing adversity and disproportionality across our diverse communities.’

# Increase Trust, Engagement and Equity



## Why is it a priority?

The Newham Safety Partnership places a strong focus on improving the confidence and trust in our local community. We understand that the perception of crime and safety for our local people can be starkly different to the reality of the issues our residents are concerned about. We are committed to developing the ways in which we engage with residents and businesses to understand and respond to the crime and disorder issues they are experiencing and therefore supports delivery of all of the other priorities in this strategy. Trust and confidence in the police, as measured by the Public Attitude Survey, has been falling over the last few years and whilst there have been some improvements recently, there is much more to be done. The NSP is focused on improving safety for women and girls and reducing gender based violence and will support the delivery of the New Met for London plan, developed by the police to deliver more trust, less crime and high standards after high profile violent incidents involving police officers and a critical review by Baroness Casey. Newham is also one of the most diverse boroughs in the country and as such equality is at the heart of our approach. We recognise the impact that inequality, disadvantage and injustice plays in perpetuating crime and disorder in the community. Black boys are overrepresented in the criminal justice system, in youth violence and exploitation statistics including as victims of knife and gun crime and have poor health outcomes and is linked to deprivation.



Confidence in policing has fallen from 46% in 2023 to 43% in 2024



Victim satisfaction with the police has fallen from 61% in quarter 3 23/24 to 58% in quarter 3 24/25



Londoners are increasingly worried about crime. In Q2 24-25, 48% of Londoners were worried about crime in their local area, an increase of two percentage points on Q1 24-25, and five percentage points on Q4 23-24



There is disproportionality in the youth justice system with 43% of the youth offending cohort being from a black background compared to 18% of the general population

## What are we looking to achieve?

- We are a listening and open partnership where we endeavour to give all people a say and stake in the decisions that matter and will engage communities that are not currently empowered to contribute
- We work together to embed practices that understand the impact of inequality and discrimination and ensure our partnership is culturally informed and working to reduce disproportionality
- We work in partnership to assess and mitigate risks to safety including preventing and improving our response to emergencies
- We raise awareness within our communities and provide available interventions that aid equality for all in the borough
- We listen, learn, and act on the expertise of those living, and working in the borough and will build on what communities have already told us to ensure the partnership meets the multiple and intersecting needs of Newham residents
- We will endeavour to understand our residents in the context of wider structural inequalities and discrimination and through recognising the individual experiences of each resident, we will tailor services to meet their needs.

## What we intend to do

- Conduct an annual crime and community safety survey with residents focusing on perceptions of safety in our communities, how we are doing and what our key priorities should be
- Develop a programme of ongoing engagement with residents and local community groups to ensure that we understand the issues that matter the most and to co-produce solutions
- Ensure new programmes and service changes are assessed to improve equity using a four step approach- understand the current picture; assess the root cause; design the change; and implement and evaluate
- Ensure the Newham Safety Partnership is open and transparent through the development of a dedicated website, publishing of relevant minutes and reports from meetings and engaging with the community where appropriate
- Support the delivery of the Newham Race Action Plan with a focus on improving disproportionality and inclusion for the Black community and using learning to support all communities
- Support delivery of the MPS Stop and Search Charter that aims to ensure its use is fair, proportionate, and precise
- Continue to support and develop existing community engagement networks such as Safer Neighbourhood Panels and Neighbourhood forums that are representative of our local communities where there are relevant Community Safety issues
- Work with the police to collect the information retrieved through the police street safe app, which is used by people to record their feelings of safety in the borough and any other engagement information collected on perceptions of safety locally
- Develop joint tools and training focused on neuro-divergence and mental health
- Support the Commission on the Future of Inclusion and Belonging in Newham through the contribution of evidence and consideration of recommendations when complete
- Monitor and respond to any increase in community tensions in the borough
- Engage and support our local communities in the aftermath of Serious Crime Incidents, working with local stakeholders
- Work with the London Fire Brigade to improve fire safety, ensure the response to emergencies is effective and in the delivery of the Newham Borough Risk Management Plan and the LFB plan Our plan | London Fire Brigade
- Support the delivery of the police plan to improve trust and confidence - A New Met for London | Metropolitan Police.

## How we will measure progress and success

- Police public attitude survey KPIs
- Victim satisfaction
- Increased feelings of safety of residents - % of people worried about crime and ASB in their area
- Increased confidence of women to report concerns to Police and partner agencies on locations of concern to build a better intelligence picture of risk
- ASB satisfaction measures
- Increased partnership engagement with residents leading to trust and confidence in partnerships ability to respond to community concerns.

# Reduce Neighbourhood Crime



## Why is it a priority?

Newham is committed to working in partnership to prevent Neighbourhood Crime, support vulnerable victims and understand underlying behaviours to divert perpetrators. We need to do more to prevent these crimes and hold perpetrators to account. We know that theft and robbery offences are significant issues; Stratford and East Ham have a disproportionate number of offences when compared to other locations in the borough; tackling ASB is one of the biggest challenges we face in Newham with residents consistently identifying noise, drunk and rowdy behaviour in public places and people using or dealing drugs as key areas of concern. Drugs are also a significant driver of Neighbourhood Crime and ASB, and are therefore a key priority for the partnership. We will be focussed on tackling these issues but we will remain agile and adapt our approach as new issues emerge.



Theft offences have increased from 11410 in 2023 to 14357 in 2024



ASB reports have increased from 19028 in 2023 to 22201 in 2024



Robbery offences have increased from 1499 in 2023 to 1704 in 2024



The two locations with the highest volume of offences are Stratford and East Ham. Offences have increased by around 20% and across most crime types in both locations when compared to the previous year

## What are we looking to achieve?

- Enable residents to report Neighbourhood crime and ASB easily, accessibly and confidentially and ensure the response is quick and victim centred
- Safeguard vulnerable victims and perpetrators, ensuring appropriate support is in place
- Ensure there is an evidence based, multi-agency and problem solving approach to tackling Neighbourhood crime
- Tackle acquisitive crimes like robbery and theft through prevention, enforcement and a focus on reducing prolific offending
- Work in partnership to break drug supply chains and ensure there is excellent treatment and community support available.

## What we intend to do

- Be intelligence led, ensuring data is used to identify problems at the earliest opportunity and target our resources effectively by focussing on problematic locations through the NICE partnership model and Precision Policing
- Delivery of Project ADDER to reduce illegal drug use, drug related crime and drug deaths
- Make better use of our CCTV resources to identify perpetrators of crime, ASB and illegal dumping of waste
- Use problem solving action plans to drive an effective multi agency response to reduce incidents of neighbourhood crime
- Enable greater problem solving and crime prevention through environmental design by training and refocusing the Community Safety Enforcement Team
- Use our Community Risk Management Meeting to review complex ASB cases and develop effective responses
- Improve engagement with residents on ASB to ensure that reporting is easy, services are effective and victim centred
- Utilise restorative approaches and mediation to support early resolution of ASB
- Support the delivery of contextual safeguarding including the setting up of Safe Havens
- We will deliver the Public Spaces action plan, including delivery of the Safer Stratford and Safer East Ham Partnerships
- Work in partnership with the London Fire Brigade to reduce deliberate and preventable fires
- Use the full range of enforcement powers available to the partnership and hold perpetrators to account
- Tackle irresponsible business practice and improve public protection through licensing and trading standards functions
- Work with landlords and housing providers to better manage ASB in and around residential settings and estates.
- Communicate messages that provide reassurance and help prevent residents and businesses from being victims of crime.

## How we will measure progress and success

- Increased feelings of safety of residents
- Reduction in repeat ASB reports – police and council
- Increased satisfaction with response to ASB reports
- Number of acquisitive crimes with a focus of theft and robbery
- Proportion of individuals reporting use of drugs in the last year
- Stop and Search outcomes
- Reduction in residential and public space ASB.



# Reduce Hate Crime and Extremism



## Why is it a priority?

Newham is a diverse borough where most people treat each other with respect and dignity. Unfortunately, there are some who don't hold those same values, perpetuating hate. Newham is no place for hate and it will not be tolerated. We welcome everyone inclusive of their race, faith, disability, sexuality and gender identity. Furthermore, the Prevent Duty places a statutory duty on many of the Newham Safety Partnership organisations to have due regard to the need to prevent people from being drawn into terrorism and extremism. We are therefore committed to keeping people and communities safe and will work in partnership to identify and support people who are at risk of developing extremist ideologies and improve the safety and security of crowded places in the borough through preventative, physical measures. We recognise the devastating impact that hate crimes and extremist ideologies can have and we want to ensure Newham is a cohesive and inclusive borough for all.



There were 866 Hate Crime offences reported between Dec 2023 and Dec 2024, which represents a 12.3% decrease on reports for the previous year (Dec 22-Dec 23).



Not all types of hate crime have seen decreases in the same period though. Whilst Racist and Homophobic hate crimes have seen reductions of 18% and 31% respectively, Disability (+36%) and Anti-Semitic (+54%) hate crimes have increased significantly

## What are we looking to achieve?

- Increase confidence of victims to report incidents of hate crime
- Encourage more residents to be 'supportive bystanders' if hate incidents are witnessed and it is safe to do so
- Ensure appropriate support is available for victims of hate crime
- Celebrate diversity and encourage cohesion and community resilience against hateful behaviours in our community
- Identify and safeguard those at risk of developing extremist ideologies and being radicalised
- Improve the safety and security of crowded places.

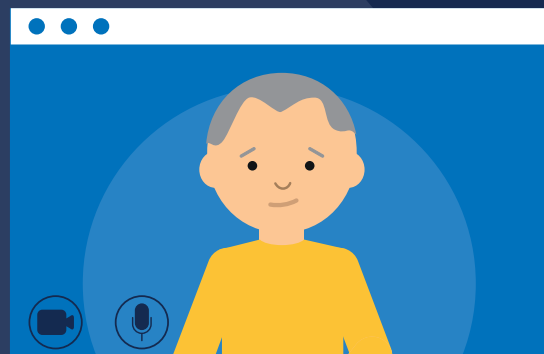
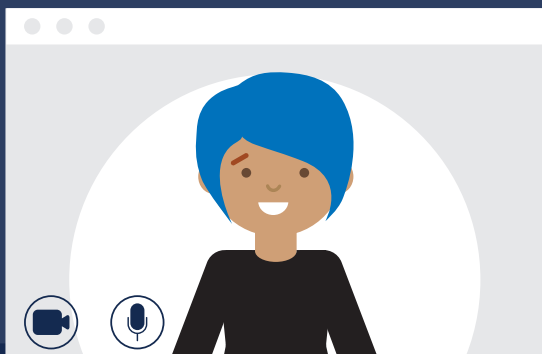
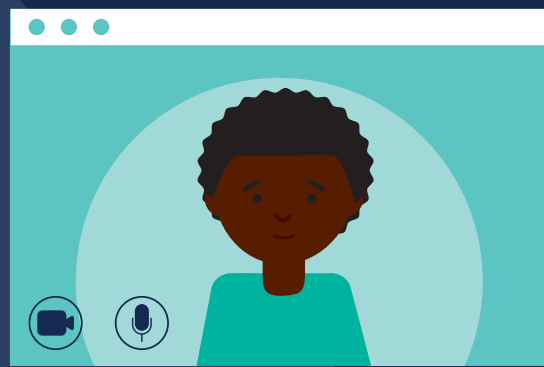
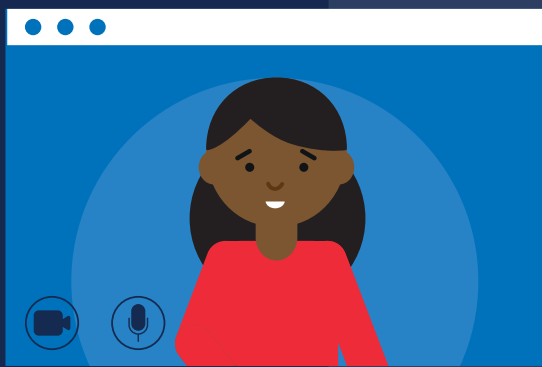
## What we intend to do

- Improve support for victims of hate crime and reduce repeat victimisation
- Engage with residents to listen to their experience of hate incidents and incorporate this into our service response
- Work in partnership to analyse hate crime trends and support robust action against perpetrators
- Raise awareness of what constitutes hate crimes and the importance of reporting them
- Improved communication and awareness of equity and anti-racist practices when working with diverse communities
- Improve reporting mechanisms to make it easier for victims and witnesses to report hate crimes
- Deliver prejudice and hate awareness training and resources to Newham schools and youth clubs
- Support and promote community events, cohesion programmes and tension monitoring
- Safeguard those at risk of radicalisation through the delivery of the Channel Panel and Prevent Steering Group
- Ensure frontline professionals are trained in the Prevent duty and referral process
- Improve the safety and security of crowded places and points of interest through preventative, physical measures.

## How we will measure progress and success

- Victims and survivors of hate crime reporting increased feelings of safety in public, private and online
- Fewer repeat victims of hate crime
- Improved public perception of feeling the police treat everybody fairly regardless of who they are
- Increased awareness of PREVENT across partner agencies and amongst our communities
- Improved knowledge and confidence in regards to PROTECT & PREPARE amongst partners, businesses, and place owners.

# Reduce Modern Day Slavery and Exploitation

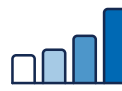


## Why is it a priority?

Modern Slavery is a term that includes any form of human trafficking, slavery, servitude or forced labour, as set out in the Modern Slavery Act 2015. Victims of modern slavery are often involved in the drugs trade, prostitution and other forced labour and are unable to leave their situation of exploitation, controlled by threats, punishment, violence, coercion and deception. Exploitation can take a number of different forms and victims may be subject to multiple forms of abuse at the same time, such as criminal exploitation (including county lines) and sexual exploitation. Cuckooing is a tactic used by criminals, typically drug dealers, to take over the homes of vulnerable individuals, such as care leavers or those with addiction, physical or mental health issues, and use the property as a base for criminal activity. This is a common characteristic of the county lines business model and can occur in a range of settings such as rental and private properties, student accommodation, prisons, and commercial properties. Modern Day Slavery and Exploitation can result in severe mental health issues, trauma and long-term psychological effects for survivors. There are also significant physical dangers associated with exploitation, such as involvement in serious violence. We are therefore committed to work in partnership to best identify and support survivors by raising awareness and empowering staff to take action



Modern Slavery offences recorded by the police reduced from 209 in 2023 to 124 in 2024



Newham has the highest number of recorded cases of any London borough



The National Referral Mechanism has seen increasing numbers of referrals over the last few years and from July to Sept 2024 it saw its highest number of referrals in a quarter since it started in 2009

## What are we looking to achieve?

- Work in partnership to strengthen the identification and response to exploitation
- Prevent Modern Day Slavery and exploitation through training and raising awareness of what it is and how to report it
- Proactively protect and support victims through effective safeguarding and appropriate pathways
- Pursue and disrupt perpetrators
- Tackle Modern Day Slavery and exploitation through strong leadership and effective partnerships
- Improve awareness and collaboration to address cuckooing.

## What we intend to do

- Deliver modern slavery training sessions for frontline professionals across various sectors with a focus on identifying signs of modern slavery, using the National Referral Mechanism (NRM) and understanding the Duty to Notify requirements
- Deliver the Newham Sex Work Strategy
- Work in partnership to deliver the cuckooing 10 point action plan, including raising awareness, prevention, outreach, improving data and intelligence and supporting survivors
- Support, collaborate with and empower families, parents, carers to recognise and respond to exploitation and abuse and strengthen parental authority to respond to harm
- Work in partnership to bring those who exploit children and harm children to justice.
- Provide victims with appropriate and targeted support that meet complex needs, reduces the risks they face and helps them to recover and rebuild their lives. Services will be trauma-responsive, accessible, trusted, non-discriminatory and anti-racist
- Engage with the community and deliver awareness campaigns to educate diverse audiences on recognising and reporting modern slavery, with a focus on hidden exploitation and victim support
- Provide specific information to landlords and the wider Housing sector on identifying and preventing modern slavery and on specific responsibilities and the consequences of non-compliance.
- Ensure all suppliers, including schools registered with the council, comply with modern slavery standards through regular audits to eliminate risks in their supply chains and operations
- Establish reporting and partnership information sharing mechanisms to enable effective analysis of data on trends and risk factors to inform prevention strategies, identify high-risk locations and populations and make evidence-based decisions.

## How we will measure progress and success

- Appropriate staff recognise when Modern Day Slavery is taking place and are confident to make a referral through the NRM
- Residents better understand what Modern Day Slavery is, the risks in their own community and how to report it
- Victims are removed from their situation of exploitation and to a support pathway
- More offenders are brought to justice by prosecuting those that exploit others
- Reduce the number of children and young adults who are victims of violence and exploitation
- Increased evidence that criminal gangs and those who seek to exploit and harm children and young adults will be tackled, brought to justice and stopped.

# Reduce Reoffending



## Why is it a priority?

It is a statutory requirement to make efforts to reduce reoffending and it is based on the principle that a relatively small number of prolific offenders are responsible for most crimes committed. Newham is making concerted efforts to reduce the likelihood of reoffending. Reducing reoffending by the most violent and high-risk groups is also a key priority for the Mayor of London, as set out in the Police and Crime Plan for London. Adults in contact with the criminal justice system often have vulnerabilities including being victims of crime, homelessness, poor physical and mental health, substance misuse, and poor educational attainment and employment prospects. Newham Safety Partnership is committed to working collaboratively to provide offenders with the support they need to break the cycle of offending. This includes diverting under 18s from the criminal justice system, reducing reoffending and addressing disparities in the number of black and looked after children within the Youth Justice System.



Adult reoffending rates fell from 22% in quarter 2 2023 to 17% in quarter 2 2024



Youth reoffending rates fell from 24.4% in 2022 to 21.1% in 2023

## What are we looking to achieve?

- Ensure appropriate interventions are in place to help reduce reoffending
- Ensure services are designed to meet the specific needs of the local community, including those transitioning from youth justice services into adults
- Reduce youth offending and engage young people who are in the youth justice system
- Enforce against persistent/prolific offenders
- Disrupt and prevent serious and organised crime to reduce the impact on communities and residents.



## What we intend to do

- Coordinate a multi-agency action plan to address reoffending and support rehabilitation of offenders
- Improve access to drug and alcohol treatment services and work to ensure more people successfully complete their treatment and not return to the service within a six month period
- Deliver the Youth Justice Plan focussing on preventing first time entrants, reducing disproportionality and reoffending rates
- Protect the public from prolific offenders through Multi-Agency Public Protection Arrangements
- Deliver the Transitions to Adulthood Hub (Y2A) delivering a holistic, trauma-informed service for 18-25 year olds on probation and 17 year olds transitioning from the YOS to adult probation
- Ensure the NSP Board are aligned with the Integrated Offender Management Neighbourhood Crime Strategy by prioritising those nominals who pose the highest risk of re-offending and are convicted of an acquisitive crime offence, specifically Burglary, Robbery, Theft from person, Theft of car
- Utilise IDIOM data to evidence effectiveness of IOM by reporting on the cost of crime before, during and after IOM management
- Implement enhanced pathways for IOM nominals and utilise third sector providers to deliver innovative approaches that aim to facilitate long term positive change.

## How we will measure progress and success

- Reduce rate of reoffending for youths and adults
- Maintain a reducing reoffending rate of 22% for the IOM cohort
- Reduce rate of first time entrants to criminal justice system
- Increase in drug treatment completion rates
- Improve access to stable accommodation for IOM service users
- More offenders brought to justice through increased sanction detection rates.

# Reduce Serious Violence



## Why is it a priority?

Reducing and preventing Serious Violence in the borough is a significant priority. We have a statutory duty to agree a strategic multi-agency response as per the Serious Violence Duty and is one of the four overarching objectives included within the Mayor of London's Police and Crime Plan. Our approach to tackling violence adopts the principles of a 'Public Health approach'. This means we will look at violence as a preventable consequence of a wide range of risk factors, such as adverse early life experiences, or harmful social or community experiences and influences. The most important part of this is working with our local community, as they are the ones who are directly affected, have lived experience of the challenges and know what is likely to work to reduce violence and abuse. Through our Violence and Vulnerability Reduction Action Plan, we will deliver a coordinated local response to identify the major causes of violence and seek to provide early interventions to help prevent the spread of violence. However, due to the impact of weapon enabled crime, it remains too high and continues to be a priority for the Newham Safety Partnership.



Knife crime offences increased from 701 in 2023 to 823 in 2024



Violence Against the person offences decreased from 10,262 in 2023 to 9898 in 2024



Newham has the third highest number of violence with injury offences in London

## What are we looking to achieve?

- Ensure there is a partnership response to tackling violent crime, including knife crime, serious youth violence, group offending and gang violence
- Deliver a Public Health approach to addressing violence
- Safeguarding approach to victims and perpetrators, considering adverse childhood experiences (ACEs) of those affected
- Work with communities, children and young people to reduce youth violence in the borough
- Ensure that our programme is evidence-informed, evaluated and that our learning is shared.

## What we intend to do

- Work collaboratively across statutory and voluntary sector agencies to ensure delivery of related plans including the Violence and Vulnerability Reduction Action Plan, Serious Violence Strategy and Youth Safety Strategy
- Actively engage children, young adults and parents/carers in identifying and implementing solutions to youth violence
- Communities and services will work together to prevent youth violence by developing awareness, capacity and resilience, including empowering children and young adults to make positive choices and supporting those who may be affected
- Ensure a safeguarding approach for victims and perpetrators of violent crime, considering adverse childhood experiences (ACEs) of those affected
- Improve our sharing of information following incidents of violence on the borough and ensure our response supports communities and schools appropriately
- Disrupt and deter perpetrators including individual and group/gang related activity associated with violence
- Develop local process where weapons can be safely disposed of, without repercussions such as knife amnesties and knife bins as well as weapons sweeps conducted by range of partners and agencies
- Newham Police Violence Suppression Unit will deliver a Violence Focus Desk which looks at both illegal and legal weapons in the borough
- Develop an agreed joint programme of actions to remove weapons and provide reassurance including Trading Standards initiatives (e.g. knife or corrosive substance test purchases)
- Undertake data gathering from across services to fully analyse the violence picture, who is offending and why and to understand what the violence drivers are across all age ranges, including connections to drugs market and organised crime
- Work in partnership to apply crime prevention principles that will improve public spaces and reduce the risk of violence
- Funded activities are informed by national or local evidence and ongoing evaluation of the programme
- Academic work commissioned with best in class universities and think tanks.

## How we will measure progress and success

- Reduction in possession of weapon offences
- Sustained reduction in violent crimes
- Reduction in young people entering the criminal justice system, and improved support for those currently within the system
- Young people report improved feelings of safety in public, private and online
- Victims of serious violence are provided with support and report decreased exposure to exploitation and harm post intervention.

# Reduce Violence Against Women and Girls



## Why is it a priority?

Violence, misogyny, and other forms of abuse towards women and girls sadly remain an unacceptable but everyday occurrence up and down the country. We want to do everything we can to reassure our residents in Newham that they can travel, work and go out without fear. Enhancing the safety of women and girls is a key priority for the Newham Safety Partnership. We have collaborated extensively with our partner organisations in the borough to develop a robust approach to responding to concerns of women's safety as well as identifying ways to take preventative action to enhance safety in public spaces, provide appropriate support to survivors and hold perpetrators to account. We are also committed to developing and improving our response to domestic abuse in the borough. While much of the domestic abuse experienced by survivors is rooted in gender bias and inequality towards women, our approach is fully inclusive and offers support to any individual experiencing domestic abuse and sexual violence.



Sex offences increased from 962 in 2023 to 1010 in 2024



Domestic abuse offences decreased from 4149 in 2023 to 3718 in 2024 – Offences are still high though with Newham having the 3rd highest number of offences across London

## What are we looking to achieve?

- Adopt a Public Health approach, be person centred and demonstrate trauma-informed practice
- Reduce victimisation, repeat victimisation and risk to survivors of domestic abuse and sexual violence and children/families who witness domestic abuse and sexual violence
- Ensure access to appropriate services for victims, such as housing, that meet the specific needs of the local population
- Increase confidence in reporting domestic abuse and sexual offences
- Hold perpetrators of abuse to account for their actions and offer them support to change their behaviour
- Place the voice of survivors and residents at the heart of our strategy
- Every resident, employee and visitor to Newham should feel safe and live free from abuse, violence, harassment and fear.

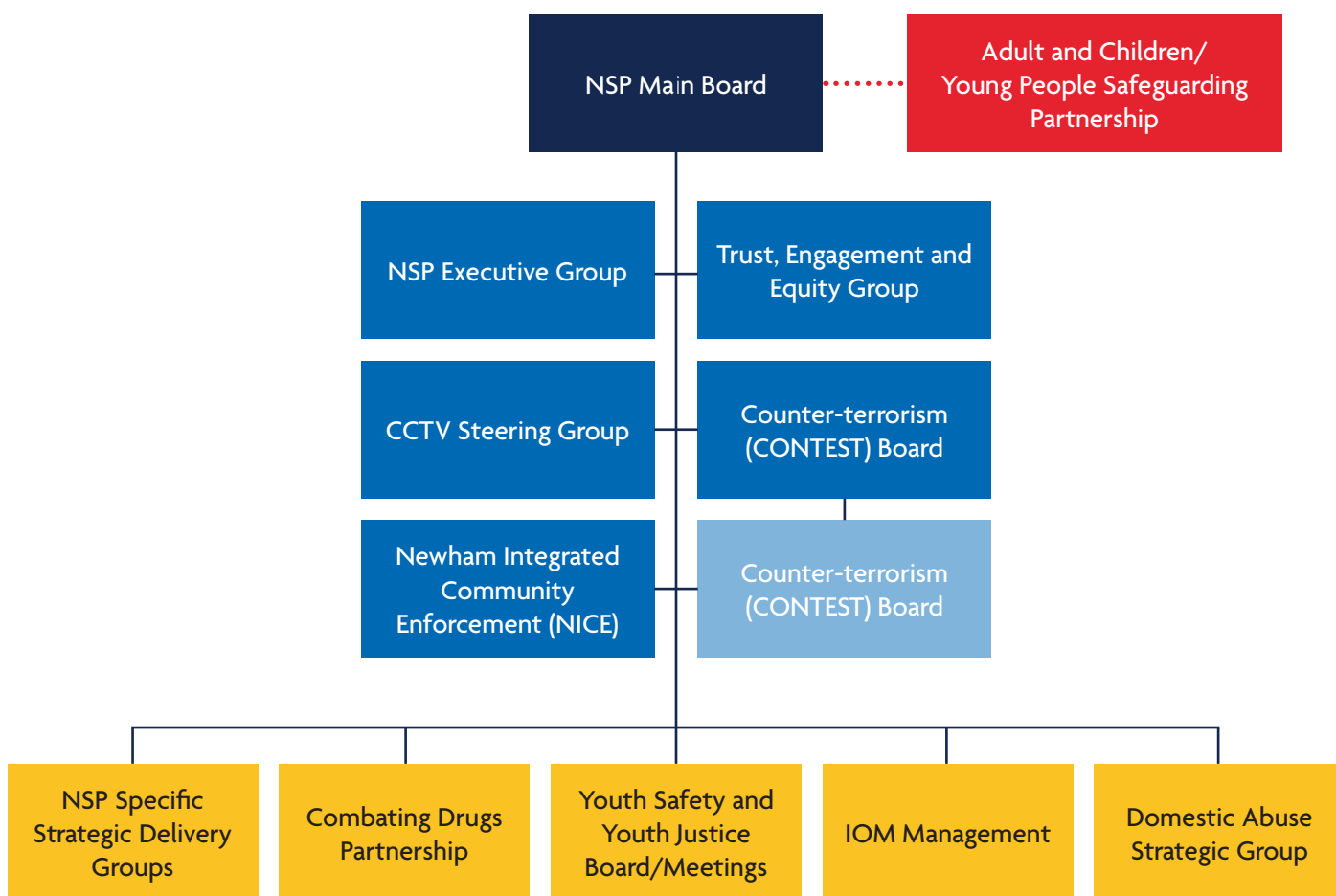
## What we intend to do

- Delivery of the Newham Domestic Abuse Strategy ensuring a 'whole borough community' approach for each survivor, their family, friends, neighbourhood and the wider Newham community and society
- Engage with women around their safety concerns through women's focus groups, surveys, utilising StreetSafe and Walk and Talk initiatives and 'community conversations' to establish locations of concern and enable effective targeting of resources
- Deliver an 'Open Spaces Action Plan' to improve feelings of safety in identified problem hotspots, tackle perpetrators and challenge behaviours
- We will undertake Environmental Visual Audits (EVAs) and night audits of our key hotspot areas for safety concerns and identify physical improvements to improve feelings of safety
- Consider implementing a Public Space Protection Order to tackle street harassment
- Ensure a safeguarding approach for victims and perpetrators of violent crime, considering adverse childhood experiences (ACEs) of those affected
- Deliver a campaign to tackle VAWG, misogyny and street harassment, to promoting improvements in work in this area and to embed the message that these attitudes are not acceptable in our borough
- Although women are disproportionately victims of domestic abuse and sexual offences, we still offer a range of services for male victims and survivors, and will continue to look at how we strengthen our crime reduction and support offer
- Embed the Women's Night Safety Charter and train businesses to support and protect women visiting their premises as well as their female staff through Ask Angela and Welfare and Vulnerability Engagement (WAVE) Training
- Undertake Domestic Abuse Related Death Reviews (DARDRs) in line with statutory guidance, ensuring there is ownership and delivery of the recommendations arising from them.

## How we will measure progress and success

- Victims and survivors reporting increased awareness and feelings of safety in public, private and online
- Increased feelings of safety in identified locations of concern following environmental improvements
- Fewer victims of violence
- Fewer repeat victims
- Every victim and survivor of domestic abuse and sexual violence can access specialist support, and we recognise and remove barriers to that support
- Domestic Abuse offences rate per 1000 population.

# Newham Safety Partnership Delivery Model





# Help and Support

Organisation	Contact
Police	<ul style="list-style-type: none"> <li>• Phone 999 (in an emergency or when a crime is happening)</li> <li>• Phone 101 (non-emergency and to report ASB)</li> <li>• Report ASB and crime online to the police (for drug dealing select antisocial behaviour): <a href="https://met.police.uk/report">met.police.uk/report</a></li> </ul>
London Fire Brigade	<ul style="list-style-type: none"> <li>• In an emergency you should always call 999.</li> <li>• For non emergency enquiries: <a href="https://london-fire.gov.uk/contact-us">london-fire.gov.uk/contact-us</a></li> </ul>
Youth Safety	<ul style="list-style-type: none"> <li>• General advice including access to support services: <a href="https://newham.gov.uk/children-families/youth-safety">newham.gov.uk/children-families/youth-safety</a></li> </ul>
Domestic Abuse and Sexual Violence Services	<ul style="list-style-type: none"> <li>• General advice: <a href="https://newham.gov.uk/health-adult-social-care/domestic-violence-support">newham.gov.uk/health-adult-social-care/domestic-violence-support</a></li> <li>• Newham Domestic Abuse and Sexual Violence Service: <a href="https://hestia.org">hestia.org</a></li> <li>• Email: <a href="mailto:InfoNewhamDSV@hestia.org">InfoNewhamDSV@hestia.org</a></li> </ul>
Women's Safety	<ul style="list-style-type: none"> <li>• General advice: <a href="https://newham.gov.uk/public-health-safety/womens-safety">newham.gov.uk/public-health-safety/womens-safety</a></li> <li>• Police action to improve women's safety: <a href="https://met.police.uk/police-forces/metropolitan-police/areas/about-us/about-the-met/vawg-action-plan-summary/overview-action-plan">met.police.uk/police-forces/metropolitan-police/areas/about-us/about-the-met/vawg-action-plan-summary/overview-action-plan</a></li> </ul>
Victims of crime - victim support	<ul style="list-style-type: none"> <li>• Victim Support: <a href="https://victimsupport.org.uk">victimsupport.org.uk</a></li> <li>• Free support line: 0808 168 9291 (8am-8pm, Mon-Sun). Out of hours: 0808 168 9111</li> </ul>
Health and wellbeing	<ul style="list-style-type: none"> <li>• General advice: <a href="https://newham.gov.uk/health-adult-social-care/health-wellbeing-newham/2">newham.gov.uk/health-adult-social-care/health-wellbeing-newham/2</a></li> <li>• Link to services directory: <a href="https://wellnewham.org.uk/advice/find-local-support-services">wellnewham.org.uk/advice/find-local-support-services</a></li> </ul>
Drug and alcohol services	<ul style="list-style-type: none"> <li>• General advice: <a href="https://newham.gov.uk/health-adult-social-care/drugs-alcohol">newham.gov.uk/health-adult-social-care/drugs-alcohol</a></li> <li>• Drug and alcohol support service: <a href="https://changegrowlive.org/service/newham-rise">changegrowlive.org/service/newham-rise</a></li> <li>• Contact on 0800 652 3879 or <a href="mailto:newham.referrals@cgl.org.uk">newham.referrals@cgl.org.uk</a></li> </ul>
Anti-social behaviour	<ul style="list-style-type: none"> <li>• General advice including making reports to the Council: <a href="https://newham.gov.uk/public-health-safety/anti-social-nuisance-behaviour">newham.gov.uk/public-health-safety/anti-social-nuisance-behaviour</a></li> <li>• Phone the police on 999 in an emergency and 101 for a non-emergency</li> <li>• Request an ASB Case Review where you feel the response to your complaints of anti-social behaviour have not been dealt with effectively: <a href="https://newham.gov.uk/public-health-safety/asb-case-review">newham.gov.uk/public-health-safety/asb-case-review</a></li> </ul>
Hate Crime	<ul style="list-style-type: none"> <li>• General advice and police reporting system: <a href="https://report-it.org.uk">report-it.org.uk</a></li> <li>• General advice: <a href="https://newham.gov.uk/public-health-safety/hate-crime">newham.gov.uk/public-health-safety/hate-crime</a></li> <li>• Email: <a href="mailto:NoPlaceforHate@newham.gov.uk">NoPlaceforHate@newham.gov.uk</a></li> </ul>
Prevent	<ul style="list-style-type: none"> <li>• General advice and referrals: <a href="https://newham.gov.uk/health-adult-social-care/safeguarding-prevention/8">newham.gov.uk/health-adult-social-care/safeguarding-prevention/8</a></li> </ul>
Licensing and trading standards	<ul style="list-style-type: none"> <li>• For general information: <a href="https://newham.gov.uk/business-licensing-regulation">newham.gov.uk/business-licensing-regulation</a></li> </ul>

